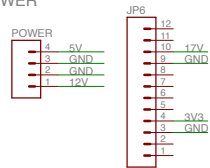
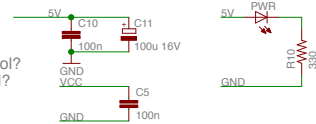


P2 A/V VGA & HDMI BOARD

POWER



TODO:
- Add PFET power control?
- Add FP RESET control?

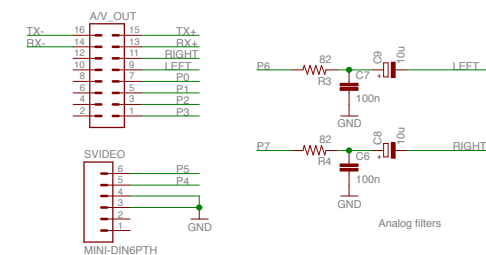


5V DC is supplied by the power board. VCC supply is 3.3V and is generated by the P2Edge module.

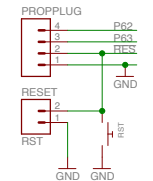
SD CARD / WIFI?

A/V OUTPUT

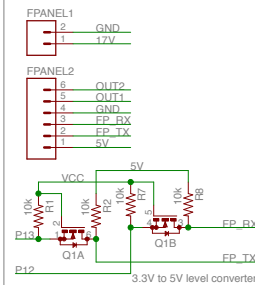
Header to RCA+Midi connector board



PROP PLUG CONTROL

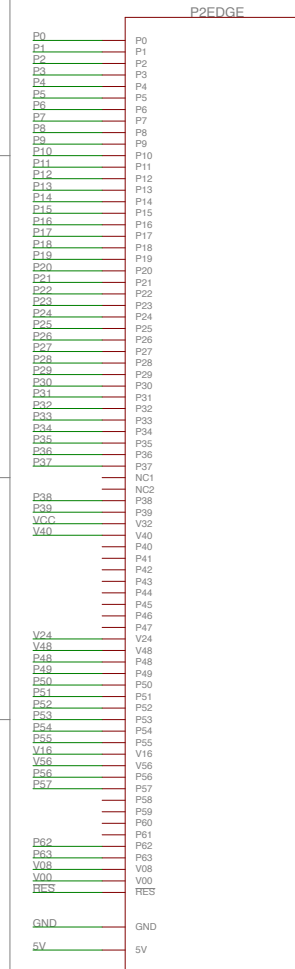


FRONT PANEL

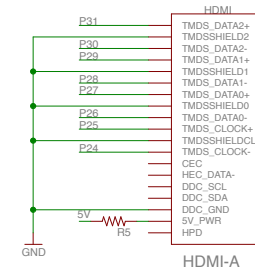


PROPELLER2 MODULE

A P2Edge is required (P2-EC32MB).

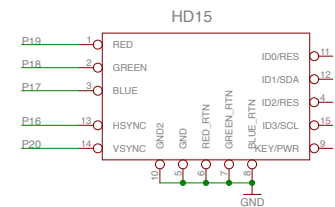


HDMI OUTPUT



The HDMI port allows DVI signalled digital video with resolutions using pixel clocks up to 34MHz to be output.

VGA OUTPUT



The VGA port allows analog video up to HDTV resolution.

USB HOST PORT

