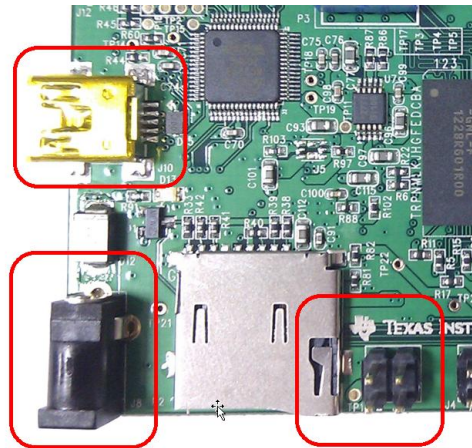


6. Power Setting

I. System Power :

This kit can be powered by

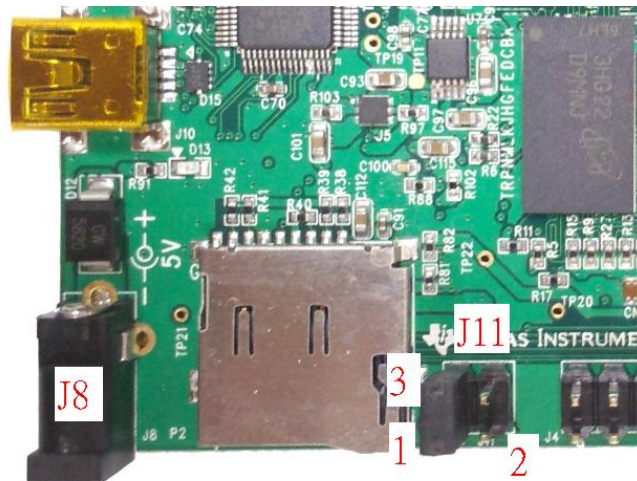
- i. mini USB : connector one mini USB which provides 5V to J10
- ii. 5V power jack : connect one 5V power adapter to J8



II. VCCIO Power

Set the power of VCCIO for bank 3A, 3B, 4A, 5A and 5B.

- i. for 2.5V : connector one jumper to the pin 1 and pin 3 of J11
- ii. for 3.3V : connector one jumper to the pin 1 and pin 2 of J11



III. Powr Jack (J8)

If you add other peripheral on BeMicro CV and it consumes higher current, you can connect one 5V power adapter to provide more current.