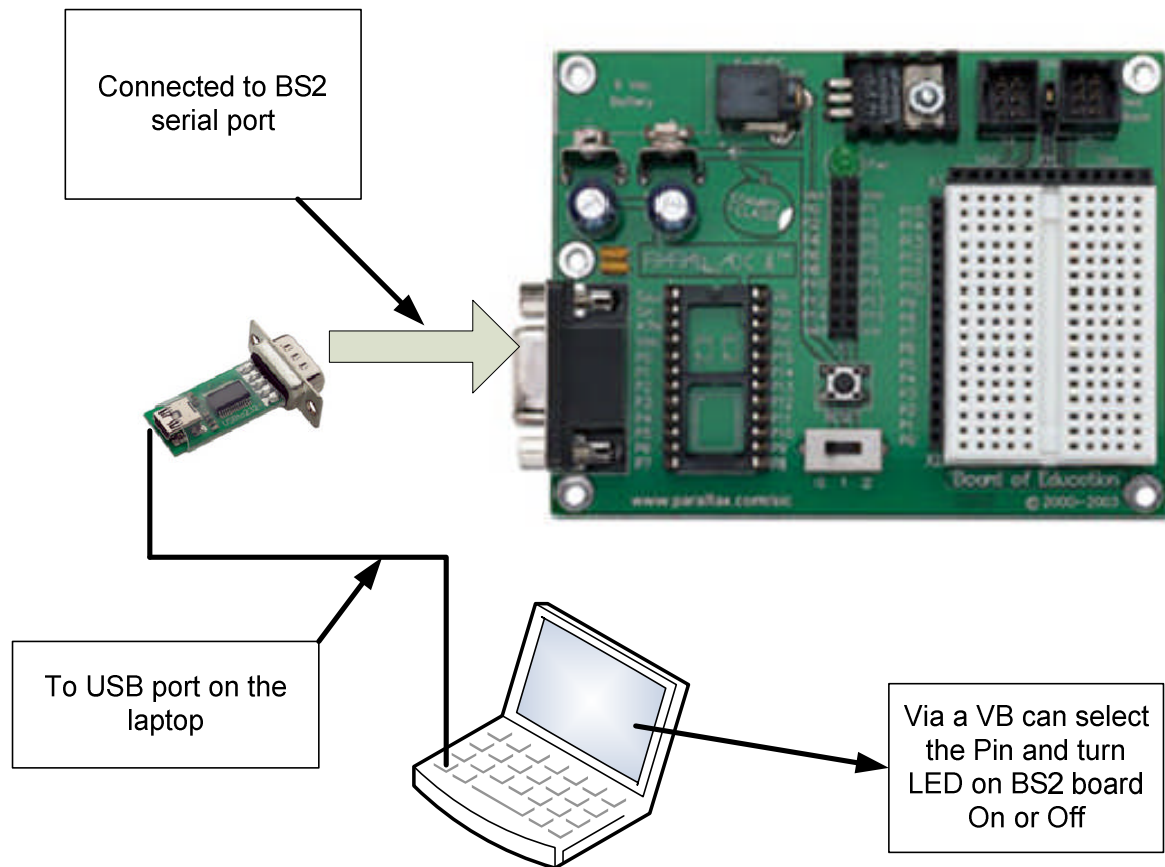


Direct connection to PC via USB-RS232 (This connection is working without any problems)

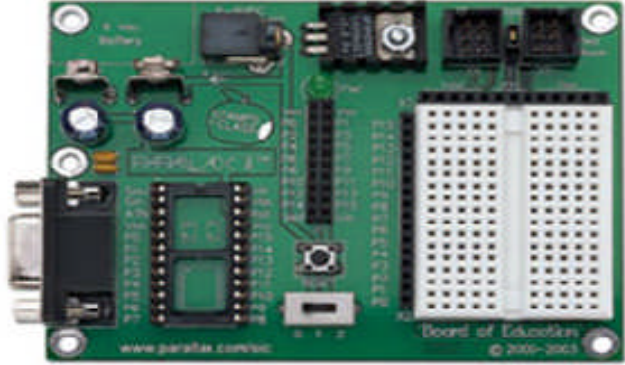
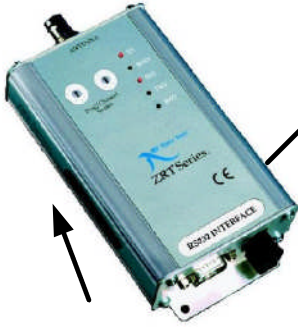
This block diagram below illustrates the connections from the Basic stamp board via USB / Serial port connected directly to the PC and the VB program is working in this way.



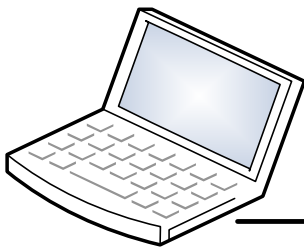
Connecting the PC via RS-485 modem to run the VB program

The block diagram illustrates the connection that it is not working???

TTL wireless modem.
How to connect to BS2 Serial port?



Wireless communication modems



RS-485 wireless modem
connected to laptop via
USB adapter

