

TMS Component Pack Help Files for Delphi 2007 for VCL /VCL.NET		11/10/2009
TMS Component Pack Samples v5.4		11/10/2009
Virtual Treeview 4.7.0		11/13/2009
Windows Driver Package - FTDI CDM Driver Package (02/17/2009 2.04.16)	FTDI	11/8/2009
Windows Driver Package - FTDI CDM Driver Package (02/17/2009 2.04.16)	FTDI	11/8/2009
Windows Driver Package - FTDI CDM Driver Package (02/17/2009 2.04.16)	FTDI	12/10/2009
Windows Driver Package - Parallax Inc CDM Driver Package (02/17/2009 2.04.16)	Parallax Inc	12/10/2009

Screen clipping taken: 1/12/2010, 1:34 PM

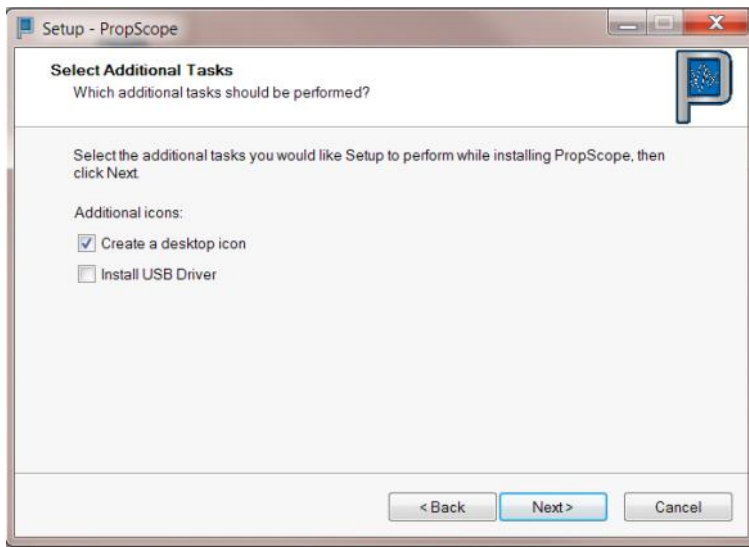
Several uninstall attempts and this one will not go away.

TMS Component Pack Samples v5.4		11/10/2009
Virtual Treeview 4.7.0		11/13/2009
Windows Driver Package - FTDI CDM Driver Package (02/17/2009 2.04.16)	FTDI	12/10/2009
Windows Live Essentials	Microsoft Corporation	11/5/2009

After running Jeff's new driver install

Virtual Treeview 4.7.0		11/13/2009
Windows Driver Package - FTDI CDM Driver Package (02/17/2009 2.04.16)	FTDI	12/10/2009
Windows Driver Package - Parallax Inc CDM Driver Package (02/17/2009 2.04.16)	Parallax Inc	1/12/2010
Windows Live Essentials	Microsoft Corporation	11/5/2009

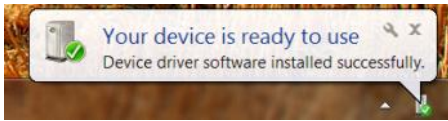
Install PropScope 1.03 without the driver



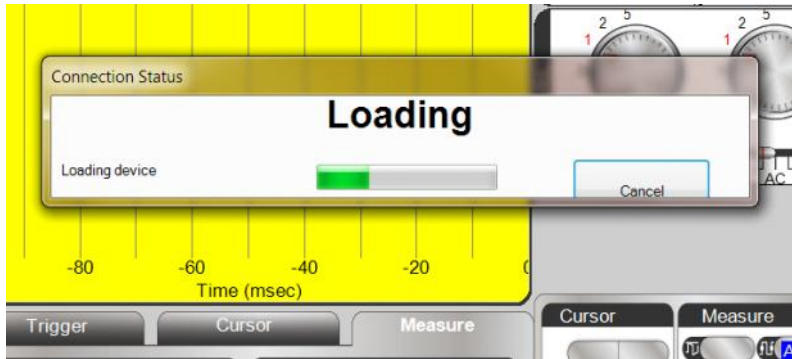
After PropScope install

Virtual Treeview 4.7.0		11/13/2009
Windows Driver Package - FTDI CDM Driver Package (02/17/2009 2.04.16)	FTDI	12/10/2009
Windows Driver Package - Parallax Inc CDM Driver Package (02/17/2009 2.04.16)	Parallax Inc	1/12/2010
Windows Live Essentials	Microsoft Corporation	11/5/2009

Plug in propScope and watch driver install and get this status



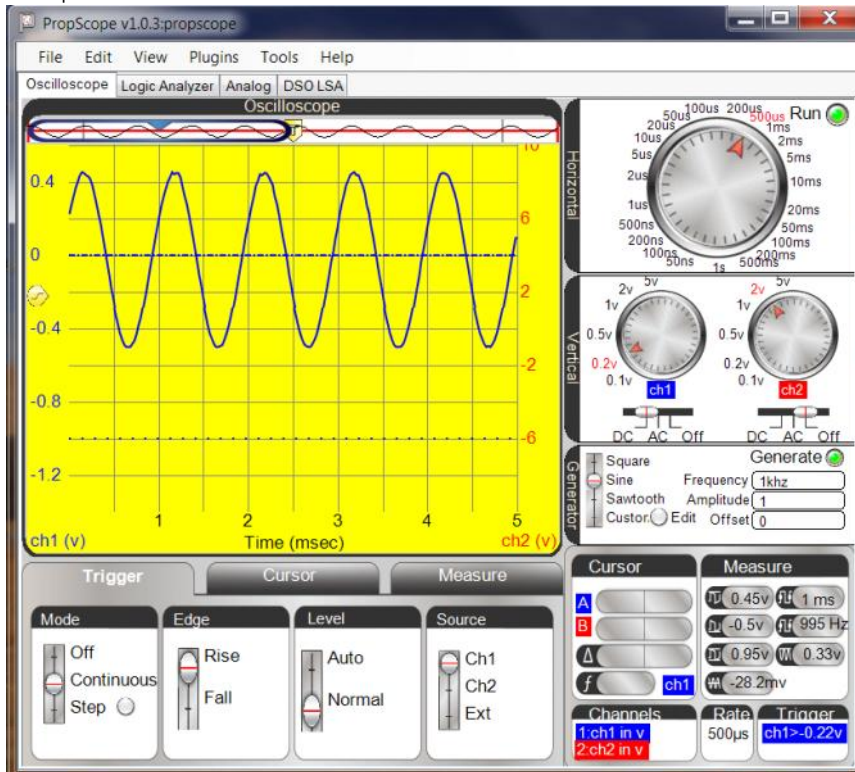
PropScope dies at this point



Attempt to run propscope from icon on desktop resulted in no indicated activity. Smells like it thinks there is a copy in memory and refuses to run multiple copies game. I got rid of the above version using task manager and it does not show any running version at this Time.

REBOOT

PropScope worked this time



Screen clipping taken: 1/12/2010, 2:05 PM

