



## *SiRFDemo User Guide*

SiRF Technology, Inc.  
148 East Brokaw Road  
San Jose, CA 95112 U.S.A.  
Phone: +1 (408) 467-0410  
Fax: +1 (408) 467-0420  
[www.SiRF.com](http://www.SiRF.com)

Part Number: 1050-0059  
Revision 1.2, March 2006

SiRF, SiRFStar, SiRF plus orbit design are registered in the U.S. Patent and Trademark Office. This document contains information on a product under development at SiRF. The information is intended to help you evaluate this product. SiRF reserves the right to change or discontinue work on this product without notice.

# *SiRFDemo User Guide*

Copyright © 1996-2006 SiRF Technology, Inc. All rights reserved.

No part of this work may be reproduced or transmitted in any form or by any means, electronic or mechanical, including photocopying and recording, or by any information storage or retrieval system without the prior written permission of SiRF Technology, Inc. unless such copying is expressly permitted by United States copyright law. Address inquiries to Legal Department, SiRF Technology, Inc., 148 East Brokaw Road, San Jose, California 95112, United States of America.

## *About This Document*

This document contains information about SiRF products. SiRF Technology, Inc. reserves the right to make changes in its products, specifications and other information at any time without notice. SiRF assumes no liability or responsibility for any claims or damages arising out of the use of this document, or from the use of integrated circuits based on this document, including, but not limited to claims or damages based on infringement of patents, copyrights or other intellectual property rights. SiRF makes no warranties, either express or implied with respect to the information and specifications contained in this document. Performance characteristics listed in this data sheet do not constitute a warranty or guarantee of product performance. All terms and conditions of sale are governed by the SiRF Terms and Conditions of Sale, a copy of which you may obtain from your authorized SiRF sales representative.

## *Getting Help*

If you have any problems with your product, contact your SiRF representative or call or send an e-mail to the SiRF Technology support group:

phone	+1 (408) 467-0410
e-mail	support@sirf.com

# Contents



Preface .....	vii
<b>1. Overview .....</b>	<b>1-1</b>
Supported Products .....	1-1
SiRFDemo Menus .....	1-1
<b>2. Getting Started .....</b>	<b>2-1</b>
Computer Requirements .....	2-1
Installing SiRFDemo .....	2-1
Installing USB Drivers .....	2-2
Windows XP Installation .....	2-2
Windows 2000 Installation .....	2-3
Windows 98 Installation .....	2-3
Connecting a GPS Receiver .....	2-4
Quick Start .....	2-4
<b>3. Using the SiRFDemo Software .....</b>	<b>3-1</b>
The Setup Menu .....	3-1
Selecting the Target Software .....	3-1
GPS Time / PC Time .....	3-2
Defining the Data Source .....	3-3
Changing Preferences .....	3-4
Displaying Information About the SiRFDemo Software .....	3-5
Exiting the SiRFDemo Software .....	3-5



---

The View Menu . . . . .	3-5
The 12-Channel Signal Level View Screen . . . . .	3-6
The Radar View Screen . . . . .	3-8
The Map View Screen . . . . .	3-10
The Navigation Message View Screen . . . . .	3-12
The Response View Screen. . . . .	3-13
The Output View Screen. . . . .	3-13
The Error Message View Screen. . . . .	3-14
The Debug Data View Screen. . . . .	3-14
The DGPS View Screen . . . . .	3-15
The Geodetic Nav View Screen . . . . .	3-16
The PPS Timing View Screen. . . . .	3-18
Aux Serial Port Message Forwarding . . . . .	3-19
SiRFDrive View Screen . . . . .	3-20
Ephemeris Information. . . . .	3-24
The Action Menu . . . . .	3-26
Opening a Data Source . . . . .	3-27
Opening a Log File. . . . .	3-27
Adding Text to a Log File. . . . .	3-30
Pausing the Display . . . . .	3-30
Initializing the Data Source . . . . .	3-31
Switching to the NMEA Protocol. . . . .	3-36
Switching to the SiRF Protocol . . . . .	3-37
Synchronizing Protocol and Baud Rate . . . . .	3-37
Switching to User1 Protocol. . . . .	3-38
Setting the Main Serial Port . . . . .	3-38
Setting the DGPS Serial Port Parameters . . . . .	3-38
Setting the UART Configuration . . . . .	3-39
Uploading an Almanac to a GPS Receiver . . . . .	3-41
Uploading an Ephemeris to a GPS Receiver. . . . .	3-41



Opening an Extended Ephemeris File . . . . .	3-42
Switching Operating Mode . . . . .	3-43
Disabling a Broadcast Ephemeris . . . . .	3-44
Setting Low Power Parameters . . . . .	3-45
Setting Advanced Power Management Options for SiRFXTac . . . . .	3-48
Setting the Message Rate . . . . .	3-48
Transmitting a User Defined Serial Message . . . . .	3-49
The Navigation Menu . . . . .	3-50
Setting Mode Mask Control . . . . .	3-51
Setting the DOP Mask Control . . . . .	3-53
Selecting an Elevation Mask . . . . .	3-53
Selecting a Power Mask . . . . .	3-54
Enabling/Disabling the Static Navigation . . . . .	3-55
Setting the DGPS Mode . . . . .	3-55
Selecting the DGPS Source . . . . .	3-56
Setting the SBAS Operating Mode . . . . .	3-57
The Poll Menu . . . . .	3-58
Viewing the Software Version . . . . .	3-59
Polling the Clock Status . . . . .	3-59
Polling the Navigation Parameters . . . . .	3-60
Downloading an Almanac File . . . . .	3-61
Downloading an Ephemeris File . . . . .	3-61
Polling the Ephemeris State . . . . .	3-62
Polling the Extended Ephemeris . . . . .	3-62
The SiRFDRive Menu . . . . .	3-63
Setting Navigation Mode Control . . . . .	3-63
Calibrating the Gyro . . . . .	3-64
Setting DR Sensor Parameters . . . . .	3-64
Polling Gyro Factory Calibration . . . . .	3-65
Polling DR Sensor's Parameters . . . . .	3-65



---

<b>A. SiRFDemo Real Time View Windows</b> . . . . .	<b>A-1</b>
<b>B. File Formats</b> . . . . .	<b>B-1</b>
Modifying the Sample sirf.pos File . . . . .	B-1
Description of SiRFsig File Formats . . . . .	B-2
*.avg File . . . . .	B-2
*.pos File . . . . .	B-4
*.vel File . . . . .	B-4
*### File . . . . .	B-4
*.svs File . . . . .	B-4
<b>C. Acronyms and Abbreviations Glossary</b> . . . . .	<b>C-1</b>

# Preface

---



The *SiRFDemo User Guide* contains detailed information about how to use the software tool called SiRFDemo.

This User Guide is based on SiRFDemo release version 3.83, but may be relevant to later versions.

## *Who Should Use This Guide*

This manual was written assuming the user has basic computer skills and is familiar with the Windows operating environment.

## *How This Guide Is Organized*

**Chapter 1, “Overview”** gives a high-level overview of the SiRFDemo software product including what it does, supported products, and available menus.

**Chapter 2, “Getting Started”** explains how to install the software and hardware, how to start the SiRFDemo software, basic operation, and how to ensure that the software and the GPS receiver are operating correctly.

**Chapter 3, “Using the SiRFDemo Software”** describes SiRFDemo menu functions.

**Appendix A, “SiRFDemo Real Time View Windows”** lists supplemental information about message content in the SiRF real time view windows.

**Appendix B, “File Formats”** describes the format of files that are either used by the SiRFDemo software or are created by the SiRFsig software.

**Appendix C, “Acronyms and Abbreviations Glossary”** describes all acronyms, abbreviations, and selected terms used in SiRF documentation..



---

## *Troubleshooting/Contacting SiRF Technical Support*

Address:

SiRF Technology Inc.  
148 East Brokaw Road  
San Jose, CA 95112 U.S.A.

SiRF Technical Support:

Phone: +1 (408) 467-0410 (9 am to 5 pm Pacific Standard Time)  
Email: support@sirf.com

General enquiries:

Phone: +1 (408) 467-0410 (9 am to 5 pm Pacific Standard Time)  
Email: gps@sirf.com

## *Helpful Information When Contacting SiRF Technical Support*

Receiver Serial Number: \_\_\_\_\_

Receiver Software Version: \_\_\_\_\_

SiRFDemo Version: \_\_\_\_\_



The SiRFDemo software is a tool that provides real-time monitoring of an attached GPS receiver's operation such as satellites being tracked, observed signal strength, and current position. It also provides the ability to configure the receiver for specific operating modes, as well as a data logging ability for later investigation.

See Chapter 3, "Using the SiRFDemo Software" for detailed information on the use and operation of the SiRFDemo software.

## *Supported Products*

The SiRFDemo software supports multiple product lines and different software releases. Available features of SiRFDemo may be different, available, or not available depending on the GPS product being used. Supported GPS products include:

- GSW2
- SiRFXTrac
- SiRFNav
- SiRFDrive
- GSW3
- SiRFInstantFix Extended Ephemeris

By default, SiRFDemo automatically detects the SiRF GPS product being used and is configured accordingly.

Throughout this manual, where appropriate, the product that a particular SiRFDemo feature supports is indicated.

## *SiRFDemo Menus*

The SiRFDemo software typically has six menus—seven when SiRFDrive & SiRFNav are selected as target software. This seventh menu is also available when SiRFDrive is chosen as the target software. All menus are described in Table 1-1.

*Table 1-1* SiRFDemo Menus

<b>Menu</b>	<b>Description</b>
Setup	The Setup menu lets you configure the data source used by SiRFDemo and the operating preferences via these menu items: Target Software Time Data Source Preferences Software Info See “The Setup Menu” on page 3-1 for detailed information about the Setup menu.
View	The View menu lets you display different view windows. The available view windows include: Signal Radar Map Navigation Response Output Error Debug DGPS Geodetic Nav PPS Timing Auxiliary Output SiRFDRIve (available only when the selected software target is SiRFDRIve or SiRFDRIve & SiRFNav) Ephemeris Information (available only when the selected software target is 2.3) See “The View Menu” on page 3-5 for detailed information about the View menu.
Action	The Action menu provides access to most of the SiRFDemo functionality such as configuration of the connected GPS receiver, data logging for later analysis, the extended ephemeris features. See “The Action Menu” on page 3-26 for detailed information about the Action menu.
Navigation	The Navigation menu lets you configure items that effect how a position solution is acquired or the type of position needed. From the Navigation menu, you can set various operating masks, the DGPS mode, and the DGPS source. See “The Navigation Menu” on page 3-50 for detailed information about the Navigation menu.
Poll	The Poll menu is used to obtain information about the attached GPS receiver such as software version, navigation parameters, and clock status. You can also use the Poll menu to obtain the latest ephemeris, almanac, and extended ephemeris. See “The Poll Menu” on page 3-58 for detailed information about the Poll menu.
Window	The commands on the Window menu commands control the appearance of the information displayed.
SiRFDRIve	The SiRFDRIve menu is used to provide control of a SiRFDRIve enabled product. This menu is only available when SiRFDRIve or SiRFDRIve and SiRFNav are selected as the target software. See “The SiRFDRIve Menu” on page 3-63 for detailed information about the Poll menu.

---

**Note** – The values that appear in the dialog boxes are default values and not what is currently set in the GPS receiver. See “Polling the Navigation Parameters” on page 3-60 to determine the current settings of all navigation parameters.

---

This chapter describes the minimum computer requirements, installing SiRFDemo, and how to quickly get started using the software. See Chapter 3, “Using the SiRFDemo Software” for detailed information on SiRFDemo operation.

### *Computer Requirements*

The following is the minimum computer configuration that is required to achieve reliable operation.

- 486 processor (or better)
- 16MB RAM minimum memory
- 100MB minimum available disk space for PC software tools installation and data logging
- Windows 98, NT, 2000, or XP operating system
- One available RS232 serial port

### *Installing SiRFDemo*

To install SiRFDemo from the provided CD:

1. Insert the CD into your CD-ROM drive.  
A CD browser automatically launches and displays on the screen.
2. Select Install Software Tools from the main menu of the browser interface.
3. Select SiRFDemo.

An install shield guides you through the rest of the installation.



After installation is complete, a shortcut is placed on your desktop and within the Start / Programs menu.

To install the software tools without using the CD browser:

1. Insert the CD into your CD-ROM drive.
2. Using Windows Explorer, navigate to the folder of the software tool you want to install.
3. Double click on the file `SETUP.EXE`.

An install shield guides you through the rest of the installation.

---

**Note** – During the install process, USB driver files are copied into the SiRFDemo directory. These files are required when USB communication is used. Additional installation of the drivers are required after installing SiRFDemo.

---

## *Installing USB Drivers*

SiRFDemo supports USB communication. Before USB can be used however, it is necessary to install the required USB drivers. These drivers have been copied to the SiRFDemo directory during the installation process of SiRFDemo. The install process for the USB drivers is different for different operating systems.

---

**Note** – When USB is being used, the USB port is listed as an additional serial port in the Data Source Setup dialog.

---

## *Windows XP Installation*

To install the required USB drivers on Windows 2000:

1. Connect the USB enabled SiRF GPS receiver to your PC.

Windows opens a “Found New Hardware Wizard” window.

2. Select “Install from a list or specific location (Advanced)” and press Next.
3. Select “Include this location in the search”.
4. Press Browse to locate the directory where the drivers are located and press OK.

The drivers were copied to the SiRFDemo directory during the SiRFDemo installation. By default, the directory is “C:\Program Files\SiRF\SiRFDemo\usbDrivers”

5. Press Finish to complete the installation of the “CP2101 USB Composite Device”.

Windows now opens a second “Found New Hardware Wizard” window.

6. Repeat steps 2 through to 4.
7. Press Finish to complete the installation of the “CP2101 USB to UART Bridge Controller”.

## *Windows 2000 Installation*

To install the required USB drivers on Windows 2000:

1. Connect the USB enabled SiRF GPS receiver to your PC.

Windows opens a “Found New Hardware Wizard” window.

2. Press Next to continue.
3. Select “Search for the best driver for your device (Recommended)” and press Next.
4. Select “Specify a location” and press Next.
5. Press Browse and locate the file “slabbus.inf”.

The drivers were copied to the SiRFDemo directory during the SiRFDemo installation. By default, the directory is “C:\Program Files\SiRF\SiRFDemo\usbDrivers”

6. Press Finish to complete the installation of the “CP2101 USB Composite Device”.

Windows now opens a second “Found New Hardware Wizard” window.

7. Press Next to continue and follow steps 2 through to 4.
8. Press Browse and locate the file “slabw2k.inf”.
9. The drivers were copied to the SiRFDemo directory during the SiRFDemo installation. By default, the directory is “C:\Program Files\SiRF\SiRFDemo\usbDrivers”
10. Press Finish to complete the installation of the “CP2101 USB to UART Bridge Controller”.

## *Windows 98 Installation*

To install the required USB drivers on Windows 98:

1. Connect the USB enabled SiRF GPS receiver to your PC.  
Windows opens a “Found New Hardware Wizard” window.
2. Press Next to continue.
3. Select “Search for the best driver for your device (Recommended)” and press Next.
4. Select “Specify a location”.
5. Press Browse to locate the directory where the drivers are located and press Next.  
The drivers were copied to the SiRFDemo directory during the SiRFDemo installation. By default, the directory is “C:\Program Files\SiRF\SiRFDemo\usbDrivers”
6. Press Finish to complete the installation of the “CP2101 USB Composite Device”.  
Windows now opens a second “Found New Hardware Wizard” window.
7. Press Next to continue and follow steps 2 through to 5.
8. Press Finish to complete the installation of the “CP2101 USB to UART Bridge Controller”.

## *Connecting a GPS Receiver*

To connect a SiRF GPS receiver ready for operation with SiRFDemo:

1. Connect the GPS antenna to the antenna GPS input on the GPS receiver and place the antenna in a location where it has a clear view of the sky.
2. Connect one end of a serial cable to the appropriate communications port on your computer.
3. Connect other end of the serial cable to Com A on the GPS receiver.
4. Connect a power supply to the GPS receiver and power it on.

## *Quick Start*

The following provides instructions on getting SiRFDemo started and operating correctly with a SiRF-based GPS product.

To get started quickly:

1. Connect the GPS receiver to your PC using the provided serial cable and power on the receiver.

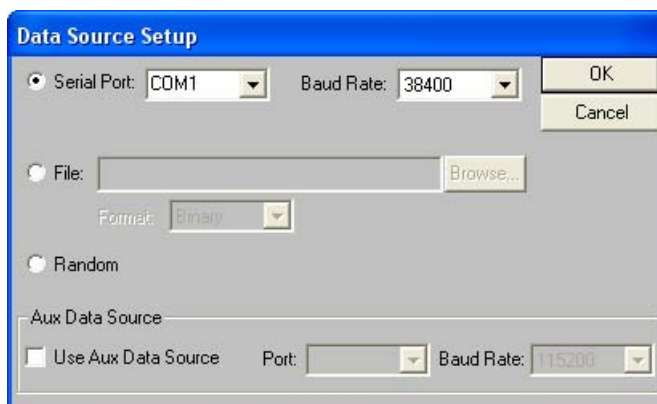
For more information about installing the GPS receiver, please see the associated Users Guide.

2. Double-click on the SiRFDemo shortcut on your desktop that was created during the install process.



SiRFDemo

The Data Source Setup screen is displayed.



3. Select the PC serial port that is being used from the Serial Port pull down list and the baud rate the receiver is operating at from the Baud Rate pull down list.

---

**Note** – SiRFDemo only displays a list of available serial ports. When USB is being used, the USB port is listed as an additional serial port.

---

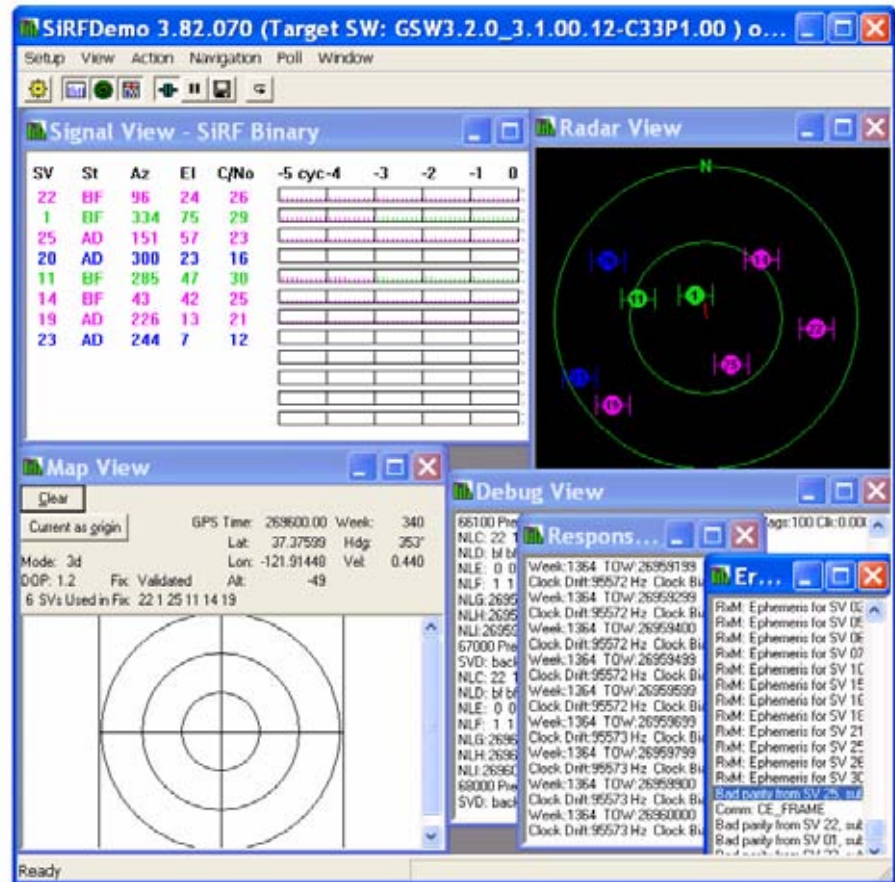
4. Click OK.

By default, the Signal Level, Tracking, and Map views are displayed.



5. Click the Connect/Disconnect button.

When your GPS receiver is properly connected and tracking GPS satellites, the Signal Level, Tracking, and Map views display information about the current operation of the receiver.



For detailed information about each of the views, please see “The View Menu” on page 3-5.

When no information is displayed on any of the screens, ensure that:

- The receiver is switched on and has a clear view of the sky.
- The serial cable is correctly connected.
- The correct serial port and baud rate are selected in the Data Source Setup dialog under the Setup menu.

Finally, select Synchronize Protocol & Baud Rate from the Action menu.

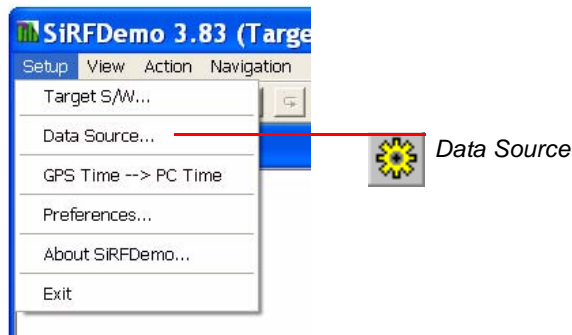


Before running the software, connect the SiRF GPS receiver to the PC, ensure it is powered on and that the antenna has a clear view of the sky. For full installation instructions, see Chapter 2, “Getting Started.”

To start the SiRFDemo software, either double click the `sirfdemo.exe` file or the shortcut on your desktop.

## The Setup Menu

This section describes the SiRFDemo functions on the Setup menu:



- “Selecting the Target Software” on page 3-1
- “Defining the Data Source” on page 3-3
- “GPS Time / PC Time” on page 3-2
- “Changing Preferences” on page 3-4
- “Displaying Information About the SiRFDemo Software” on page 3-5
- “Exiting the SiRFDemo Software” on page 3-5

## Selecting the Target Software

The SiRFDemo software supports multiple product lines and different software releases. These include GSW2, GSW3 SiRFNav, SiRFDrive, SiRFInstantFix Extended Ephemeris, and SiRFXTrac. A built-in auto-detection feature allows

SiRFDemo to identify the hardware/software platform it is connected to and configure the dropdown menus correctly. This provides access to features that are common to both platforms, such as protocol, and individual access and definition to features that are either unique, such as Static Navigation, or redefined, such as TricklePower, for each platform.

Once connected, SiRFDemo attempts to identify the connected product and software release. When the hardware detection function fails, you are prompted to select the target software manually. The auto-detection function can be disabled by unchecking the Auto-detection checkbox.

To select the target software type:

1. Select Target S/W from the Setup menu.

The Select Target Software dialog is displayed.



2. Select the appropriate target software.
3. Uncheck the Auto-detection checkbox to disable the auto-detection function or when the auto-detection fails.
4. Click OK to accept the selection.

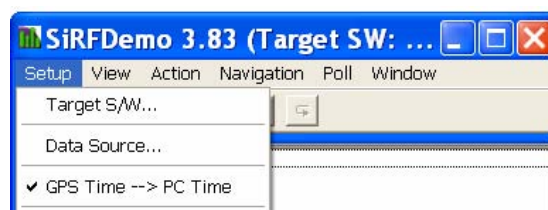
### *GPS Time / PC Time*

The SiRFDemo software is capable of matching GPS clock time to PC time. When the difference between GPS time and PC is greater than two seconds, PC clock is set to match GPS time.

To select GPS Time / PC Time:

1. Select GPS Time / PC Time from the Setup menu.

The Setup menu is displayed.



When a checkmark appears next to GPS Time, the clocks are matched.

## Defining the Data Source

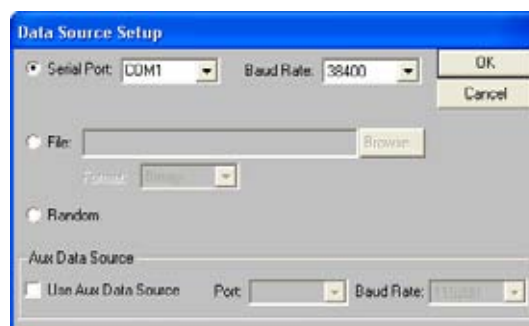
The SiRFDemo software is capable of receiving data from different sources. You can configure SiRFDemo to receive data directly from a connected GPS receiver, generate its own random data, or load data from a previously logged file.

To configure the source of the data used by the SiRFDemo software:



1. Click the Data Source button or select Data Source from the Setup menu.

The Data Source Setup screen is displayed.



2. Select either the Serial Port, File, or Random as the required data source. The following table provides a description of each available option:

Option	Description
Serial Port	SiRFDemo uses data directly from a connected GPS receiver. The connected communication port and the used Baud rate must be selected.
File	SiRFDemo uses data that is contained within an existing data file. The file may contain data in either SiRF Binary or NMEA formats.
Random	SiRFDemo uses randomly generated data. Use this option to verify that the SiRFDemo software is running without any receiver connected.
Aux Data Source	Provided for SiRFDrive use only, SiRFDemo can be configured to receive external data from another source other than the GPS receiver.

**Note** – SiRFDemo only displays a list of available serial ports. When USB is being used, the USB port is listed as an additional serial port.

3. Click OK to accept selected settings.

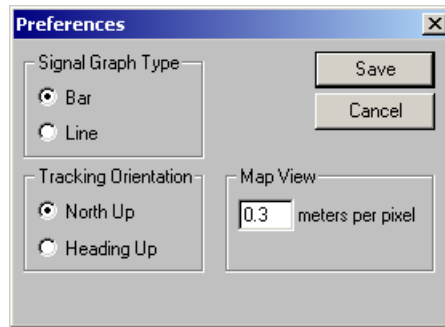
### Changing Preferences

You can change the appearance of some of the view windows to suit your personal preferences. View preferences include the Signal Level view, the Tracking view, and the Map view.

To change the appearance of the view windows:

1. Select Preferences from the Setup menu.

The Preferences screen is displayed.



2. Select the type of signal graph that you want to view on the 12-Channel Signal Level View screen.

Option	Description
Bar	Displays the data with vertical bars to represent the observed signal strength of each satellite.
Line	Displays the data in a continuous line graph form.

3. Select the direction of the tracking orientation that you want to use in the Tracking View screen.

Option	Description
North Up	True north points to the top of the circle.
Heading Up	This is typically used when the board is moved by simulation. Again, it is not recommended to use the board in a vehicle. Current heading points to the top of the circle.

4. To change the scale of the Map view, enter the number of meters you want each pixel to represent in the Meters Per Pixel field.
5. Click Save to save the changes or Cancel to exit without saving changes.

## Displaying Information About the SiRFDemo Software

1. Select About SiRFDemo from the Setup menu to display SiRFDemo software information:

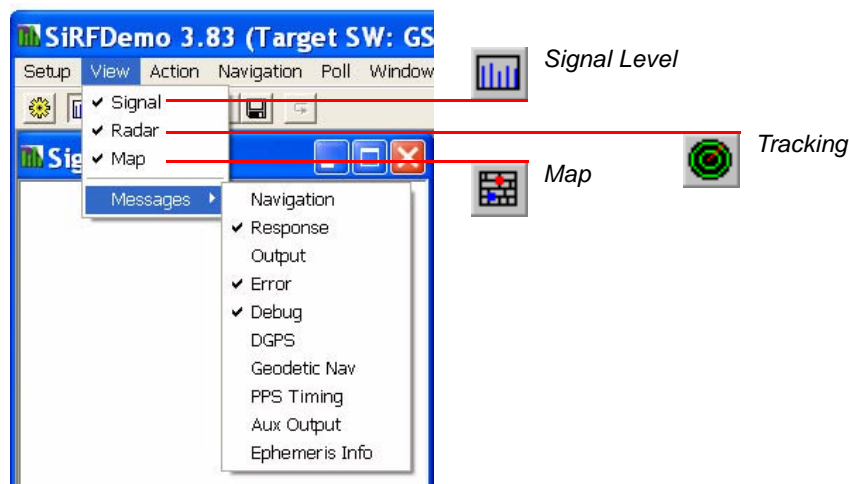


## Exiting the SiRFDemo Software

1. Select Exit from the Setup dropdown menu.  
This closes SiRFDemo software.

## The View Menu

This section describes the SiRFDemo functions on the View menu:



- “The 12-Channel Signal Level View Screen” on page 3-6
- “The Radar View Screen” on page 3-8
- “The Map View Screen” on page 3-10
- “The Navigation Message View Screen” on page 3-12
- “The Response View Screen” on page 3-13
- “The Output View Screen” on page 3-13
- “The Error Message View Screen” on page 3-14
- “The Debug Data View Screen” on page 3-14

- “The DGPS View Screen” on page 3-15
- “The Geodetic Nav View Screen” on page 3-16
- “The PPS Timing View Screen” on page 3-18
- “Aux Serial Port Message Forwarding” on page 3-19
- “SiRFDrive View Screen” on page 3-20
- “Ephemeris Information” on page 3-24

### The 12-Channel Signal Level View Screen

The 12-Channel Signal Level View screen is a combined graphical and text display of satellite tracking. Information shown by the Signal Level view includes satellite number, status, azimuth, elevation, C/No, and last five seconds of measured signal strength.

To display the 12-Channel Signal Level view screen:



1. Click the Signal Level View button or select Signal Level from the View menu.

**Note** – The Preferences screen allows you to modify the way information is displayed. Double-click the 12-Channel Signal Level View screen to display the Preferences screen.

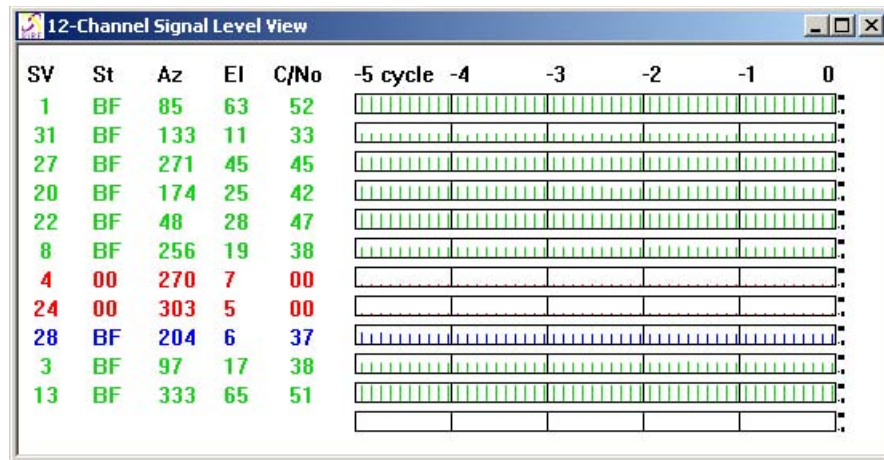


Table 3-1 12-Channel Signal Level View Information

Information Displayed	Description
Satellite Number (SV)	The GPS satellite PRN number.
Status (St)	The status of each satellite tracked (see Table 3-2, “Tracking Status Definitions,” on page 3-7 for more information).
Azimuth (Az)	Satellite azimuth (in degrees).

Table 3-1 12-Channel Signal Level View Information

Information Displayed	Description
Elevation (El)	Satellite elevation (in degrees) with the horizon being zero degrees in elevation, and directly over-head being ninety degrees.
C/No	Signal level (in dB-Hz).
Signal Level (-5 sec)	Five-second history of the measured signal strength.

Table 3-2 represents each of the possible tracking status messages and the corresponding tracking status. Each tracking status state corresponds with an achieved tracking stage for each channel of the GPS receiver.

For example, when a tracking status of 33 (Hex) is displayed, this means that satellite acquisition is achieved, the delta-phase is valid, the carrier pull-in is complete, and the code is locked onto. From a cold start you typically see the following sequence of tracking status changes; 00→33→37→3F→BF. It only takes about one second to achieve a 37 status, approximately another 12 seconds to get to a 3F status, and finally another 20 seconds to achieve a BF status. The sequence and time frames may vary considerably between channels and sessions.

Table 3-2 Tracking Status Definitions

Tracking Status (Hex)	Achieved Tracking Stage							
	Ephemeris Data Available	Acquisition Failed	Code Locked	Carrier Pull-in Done	Sub-frame Sync Done	Bit-sync Done	Delta-phase Valid	Acquisition Success
00								
01								✓
03							✓	✓
21			✓					✓
23			✓				✓	✓
25			✓			✓		✓
27			✓			✓	✓	✓
2D			✓		✓	✓		✓
33			✓	✓			✓	✓
37			✓	✓		✓	✓	✓
3F			✓	✓	✓	✓	✓	✓
8D	✓				✓	✓		✓

Table 3-2 Tracking Status Definitions (continued)

Tracking Status (Hex)	Achieved Tracking Stage							
	Ephemeris Data Available	Acquisition Failed	Code Locked	Carrier Pull-in Done	Sub-frame Sync Done	Bit-sync Done	Delta-phase Valid	Acquisition Success
AD	✓		✓		✓	✓		✓
AF	✓		✓		✓	✓	✓	✓
BF	✓		✓	✓	✓	✓	✓	✓
40		✓						
CC	✓	✓			✓	✓		
CD	✓	✓			✓	✓		✓

See “Navigation Library SV State Data - Message ID 30” in the *SiRF Binary Reference Manual* for information about SiRF extended ephemeris tracking status messages.

The information displayed in the Signal Level view is also assisted by color coding. As the tracking status of each satellite changes, the associated text and signal levels are colored to represent the current status (see Table 3-3).

Table 3-3 12-Channel Signal Level View Color Coding

Color	Description
Red	The satellite location is known from almanac information; however, the satellite is not currently being tracked.
Blue	The satellite is being tracked; however, it is not being used in the current position solution.
Green	The satellite is being tracked and is being used in the current position solution.
Aqua	For SBAS satellites only. The satellite is being tracked and corrections are being used in the current position.
Magenta	The satellite is being tracked; however, a SiRFInstantFix extended ephemeris is being used for the position solution.

### The Radar View Screen

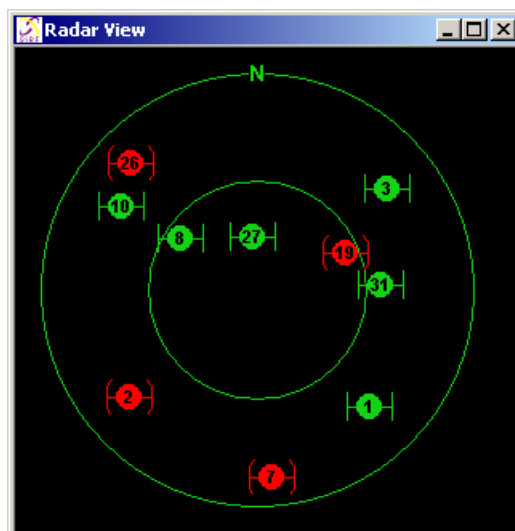
The Radar View screen graphically displays the location of each of the tracked, used, and available satellites in the form of a polar plot.

To display the Radar View screen:





1. click the Radar View button or select Radar from the View menu.



In addition to the satellite locations, the current tracking status is represented by color (see Table 3-4).

Table 3-4 Tracking View Color Coding

Color	Description
Red	The satellite location is known from almanac information; however, the satellite is not currently being tracked.
Blue	The satellite is being tracked; however, it is not being used in the current position solution.
Green	The satellite is being tracked and is being used in the current position solution.
Aqua	For SBAS satellites only. The satellite is being tracked and corrections are being used in the current position.
Magenta	The satellite is being tracked; however, a SiRFInstantFix extended ephemeris is being used for the position solution.

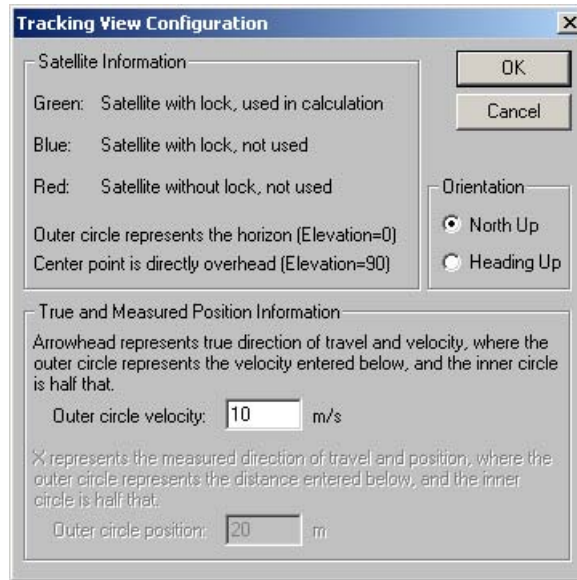
Current speed and heading (in a dynamic environment such as a moving vehicle) is represented by an arrow. The direction of the arrow represents heading while the length of the arrow indicates speed over ground.

### Configuring the Radar View Screen

The Radar view screen orientation and velocity representation can be configured.

To configure the Radar view screen:

1. Double click the Radar View screen to display the Tracking View Configuration screen.



2. Select the direction of the tracking orientation that you want to use.

Option	Description
North Up	True north points to the top of the circle.
Heading Up	This option can be used when driving. Current heading points to the top of the circle.

3. Enter the Outer circle velocity (in m/sec).

**Note** – The setting of the outer circle velocity means that when the arrow length reaches the outer circle of the plot, then the outer circle velocity has been reached.

4. Click OK to save the changes or Cancel to exit without saving changes.

### The Map View Screen

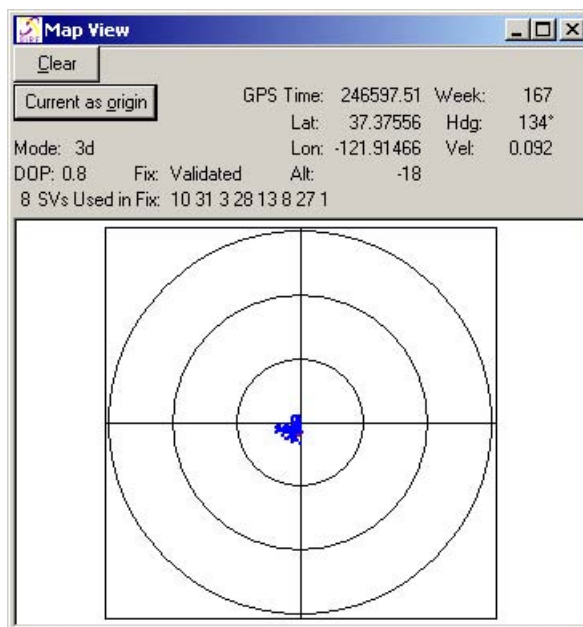
The Map view screen displays a combination of graphical and text-based information. Positions generated by the GPS receiver are plotted on the Map view screen while other information such as GPS time, GPS week, position mode, current position, heading, velocity, DOP, type of position fix, and satellites tracked are displayed as text.

To display the Map view screen:



1. Click the Map View button or select Map from the View menu.

The Map View screen is displayed.



The current position is represented on the plot by a red dot, while past positions are displayed in blue.

2. Click Clear at any time to clear any plotted positions on the plot.
3. Click Current as Origin to make the origin of the plot the same as the most recent plotted position.

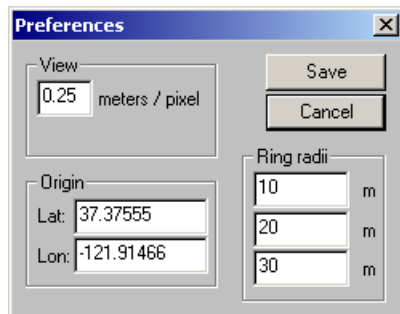
**Note** – When using the map view, you may want to change the way it is displayed. To edit display preferences, see “Changing the Map View Preferences” on page 3-11.

### *Changing the Map View Preferences*

The ability to change the scale of the Map view and the origin of the map is provided by the Map view preferences.

To change the Map view preferences:

1. Double click the Map View screen to display the Preferences window.



2. Enter the number of meters you want each pixel to represent in the meters/pixel field. This value controls the map scale.
3. Enter the latitude and longitude (in WGS-84) of the required center of the Map View display in the Lat and Lon fields.
4. To display up to three rings on the MapView display, enter the radius (in meters) of each of the rings in the Ring Radii group.  
When a value of zero is entered, the ring is not be displayed.
5. Click Save to save the changes or Cancel to exit.

### The Navigation Message View Screen

The Navigation Message view screen is used to display position solution information such as GPS time, GPS week, position mode, current position, heading, velocity, DOP, type of position fix, and satellites tracked.

To view the Navigation Message View screen:

1. Select Navigation Message from the View menu.

The Navigation Message View screen is displayed.

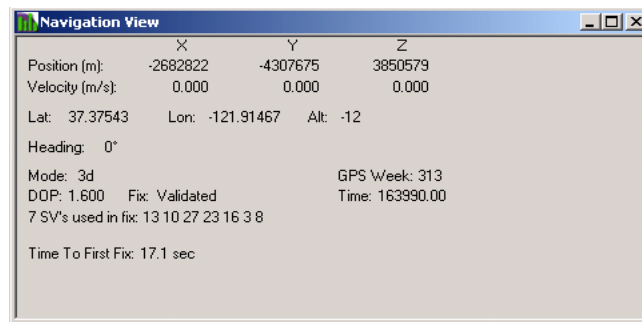


Table 3-5 Navigation Message View Information

Information Displayed	Description
X, Y, Z positions	Coordinates of user's position in ECEF (meters)
Velocity	User's velocity in ECEF (m/sec)
Latitude	User's latitude (decimal of degrees)
Longitude	User's longitude (decimal of degrees)
Altitude	User's altitude (meters)
Heading	.GPS product's direction.
Mode <sup>1</sup>	Navigation solution type. This changes from a No Nav status, through the different fix modes such as 2D, 3DLSQ etc. The Mode field should be used for any TTFF measurements
GPS Week	GPS week number

Table 3-5 Navigation Message View Information (continued)

Information Displayed	Description
DOP	Dilution of Precision
Fix <sup>2</sup>	Validated/unvalidated. From an unvalidated state, a five SV position solution must be achieved to become a validated position. If the board continues to navigate in a degraded mode (3D, 2D, 1SV, or DR), then the validated status remains. When navigation is lost completely, an unvalidated status results.
Time	Current GPS time (seconds)
SVs Used in Fix	SV PRN used in solution
Time To First Fix	The TTFF value is cleared any time a no-nav position is reported (msg 2), so the TTFF field is automatically cleared when a reset command is sent

1. The Mode field is mapped to SiRF Binary Protocol MID2, mode 1 (see the *SiRF Binary Reference Manual*). The mode field should be used as the TTFF indicator and not the Fix field with any non-zero value of mode 1 indicating a usable navigation solution.
2. The Fix field is mapped to SiRF Binary Protocol MID2, mode 2 (see the *SiRF Binary Reference Manual*).

**Note** – ECEF XYZ is converted geodetic latitude, longitude, and altitude based on the WGS84 ellipsoid parameters.

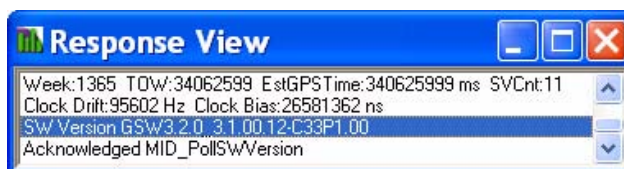
## The Response View Screen

The Response View screen is used to display any response to a poll request. You can poll the GPS receiver for the software version (see “Polling the Extended Ephemeris” on page 3-62” on page 3-58), clock status (see “Polling the Clock Status” on page 3-59), navigation parameters (see “Polling the Navigation Parameters” on page 3-60), ephemeris state (see “Polling the Ephemeris State” on page 3-62), and gyro calibration verification (see “Polling Gyro Factory Calibration” on page 3-65).

To display the Response View screen:

1. Select Messages Response from the View menu

The Response View screen is displayed.



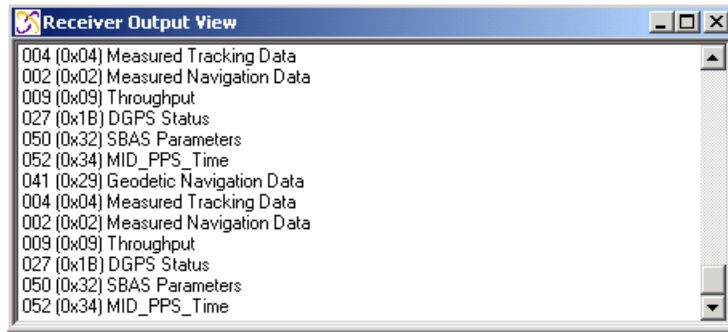
## The Output View Screen

The Output View screen is used to display the SiRF Binary message IDs that are currently being output by the attached GPS receiver.

To display the Output View screen:

1. Select Messages Output from the View menu.

The Receiver Output View screen is displayed.



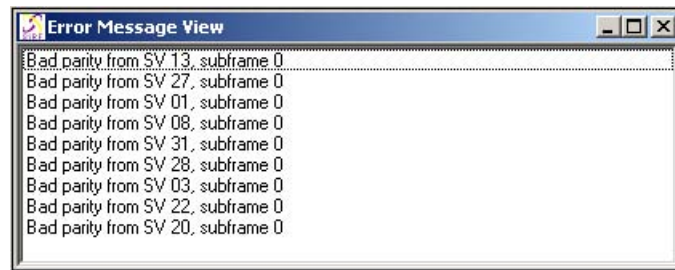
### The Error Message View Screen

The Error Message View screen is used to display any error messages that the GPS receiver may generate. Error messages are generated automatically by the GPS receiver under certain conditions. Many are caused by normal GPS operations such as acquiring a low elevation satellite, which could result in a bad parity.

To view the Error Message View screen:

1. Select Messages Error from the View menu.

The Error Messages View screen is displayed.

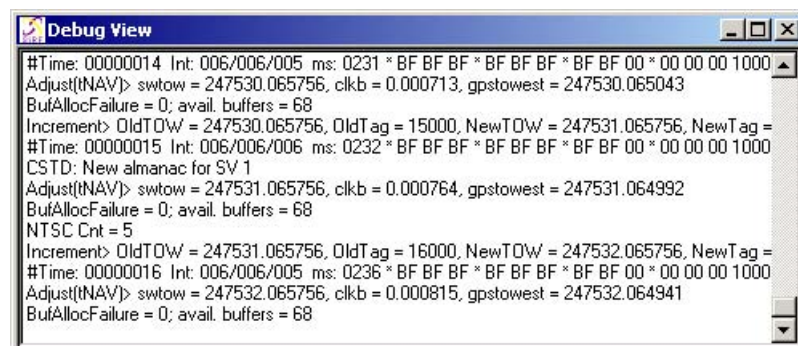


### The Debug Data View Screen

The Debug Data View screen displays additional information about the GPS receiver operation. The data is generated automatically by the GPS receiver.

To view the Debug Data View screen:

1. Select Messages | Debug from the View menu.



**Note** – To view incoming debug data the Enable Debug Data checkbox must be enabled on the Receiver Initialization screen. See “Initializing the Data Source” on page 3-31.

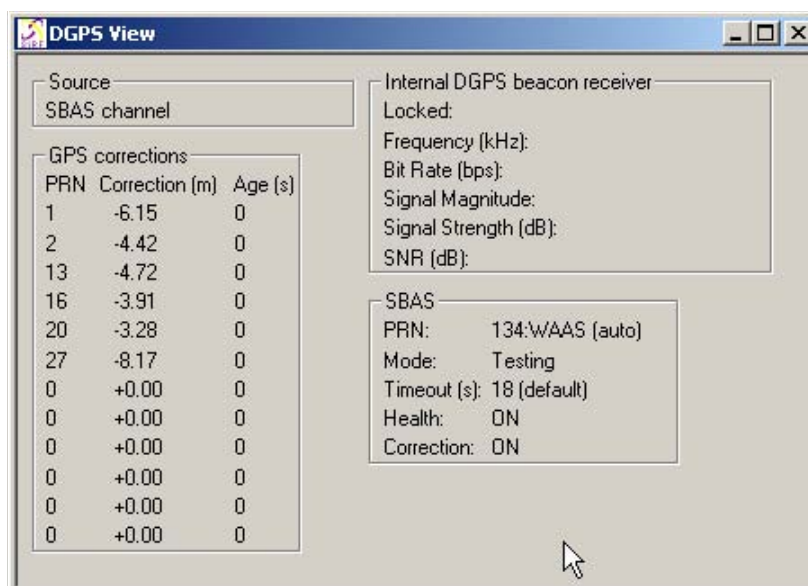
### *The DGPS View Screen*

Depending on the target software, choices of DGPS operation include SBAS, external RTCM or Internal DGPS Beacon. See “Selecting the DGPS Source” on page 3-56 for more information about each of these options. The DGPS View provides information about the DGPS source and current operation.

To view the DGPS View screen:

1. Select Messages | DGPS from the View menu.

The DGPS View screen is displayed.



The following table provides a description of each of the displayed items:

Information	Description												
Source	Displays the source of the current DGPS corrections.												
GPS Corrections	Displays the PRN, pseudo-range correction received, and the age of the correction for each satellite.												
Internal DGPS Beacon Receiver	<p>Displays where the correction was received from. The possible sources are external RTCM, internal beacon, and WAAS.</p> <p>For example, when the internal beacon (see footnote) is the DGPS source, the following information is displayed:</p> <table> <tr> <td>Locked:</td> <td>Status of tracking Coast Guard Beacon</td> </tr> <tr> <td>Frequency:</td> <td>Frequency (KHz) of beacon tracked</td> </tr> <tr> <td>Bit Rate:</td> <td>Bits per second (bps) for signal demodulation</td> </tr> <tr> <td>Signal Magnitude:</td> <td>Variable</td> </tr> <tr> <td>Signal Strength:</td> <td>Variable</td> </tr> <tr> <td>SNR:</td> <td>Signal to Noise Ratio (TBD)</td> </tr> </table>	Locked:	Status of tracking Coast Guard Beacon	Frequency:	Frequency (KHz) of beacon tracked	Bit Rate:	Bits per second (bps) for signal demodulation	Signal Magnitude:	Variable	Signal Strength:	Variable	SNR:	Signal to Noise Ratio (TBD)
Locked:	Status of tracking Coast Guard Beacon												
Frequency:	Frequency (KHz) of beacon tracked												
Bit Rate:	Bits per second (bps) for signal demodulation												
Signal Magnitude:	Variable												
Signal Strength:	Variable												
SNR:	Signal to Noise Ratio (TBD)												
SBAS	<p>Displays information about the current SBAS operation if used. The information includes:</p> <table> <tr> <td>PRN:</td> <td>The unique SBAS satellite identifier</td> </tr> <tr> <td>Mode:</td> <td>Testing or Integrity monitored.</td> </tr> <tr> <td>Timeout:</td> <td>The time out of SBAS corrections</td> </tr> <tr> <td>Health:</td> <td>Health status of the SBAS corrections</td> </tr> <tr> <td>Correction:</td> <td>SBAS correction</td> </tr> </table>	PRN:	The unique SBAS satellite identifier	Mode:	Testing or Integrity monitored.	Timeout:	The time out of SBAS corrections	Health:	Health status of the SBAS corrections	Correction:	SBAS correction		
PRN:	The unique SBAS satellite identifier												
Mode:	Testing or Integrity monitored.												
Timeout:	The time out of SBAS corrections												
Health:	Health status of the SBAS corrections												
Correction:	SBAS correction												

### *The Geodetic Nav View Screen*

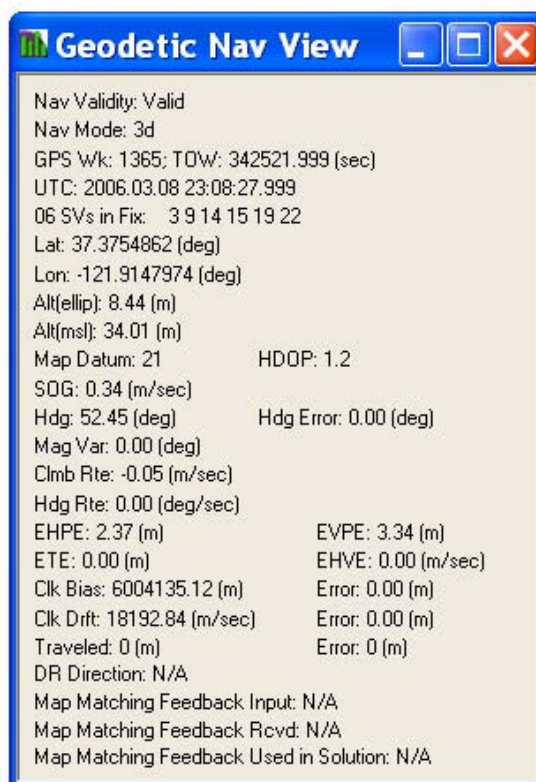
The Geodetic Nav View screen provides data about the current navigation and position performance.

To view the Geodetic Nav View screen:

1. Select Messages | Geodetic Nav from the View menu.



The Geodetic Nav View screen is displayed.



The following table provides a description of each of the displayed items:

*Table 3-6* Geodetic Nav View Screen Displayed Items

Information	Description
Nav Validity	Provides navigation validity. When the navigation solution is not valid, the reason for this are displayed
Nav Mode	The current mode of the navigation solution
GPS Wk	The GPS Week
TOW	Time of Week (in seconds)
UTC	UTC time
SVs in Fix	The number of satellites currently used in the navigation solution
Lat	The current calculated latitude (in degrees)
Lon	The current calculated longitude (in degrees)
Alt (ellip)	The altitude above the ellipsoid (in meters)
Alt (msl)	The altitude above mean sea level (in meters)
Map Datum	The currently used map datum
HDOP	Horizontal Dilution of Precision
SOG	Speed Over Ground (in meters/second)

Table 3-6 Geodetic Nav View Screen Displayed Items (continued)

Information	Description
Heading	Direction of movement
COG	Course Over Ground (in degrees)
Hdg Error	The current heading error (in degrees)
Mag Var	The currently used magnetic variation (in degrees)
Clmb Rte	The change in altitude over time (in meters/second)
Hdg Rte	The change in heading over time (in degrees/second)
EHPE	Estimated Horizontal Position Error (in meters)
EVPE	Estimated Vertical Position Error (in meters)
ETE	Estimated Time Error (in meters)
EHVE	Estimated Horizontal Velocity Error (in meters/second)
Clk Bias / Error	The current clock bias and error (in meters)
Clk Drft / Error	The current clock drift and error (in meters/second, error in meters)
Traveled / Error	The distance travelled since reset and the associated error (in meters)
DR Direction	When using the SiRFDrive software tool, the dead reckoning sensor detects forward or reverse speed
Map Matching Feedback Input	N/A indicates product does not support map matching Flags indicate enabled/disabled or true/false map matching
Map Matching Feedback Rcvd.	N/A indicates product does not support map matching Flags indicate enabled/disabled or true/false map matching
Map Matching Feedback Used in Solution	N/A indicates product does not support map matching Flags indicate enabled/disabled or true/false map matching

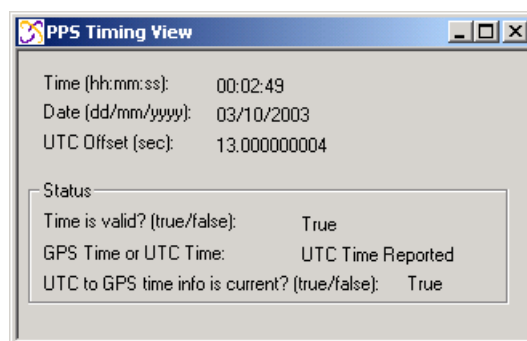
### *The PPS Timing View Screen*

The PPS Timing View screen reports the UTC time of the 1 PPS pulse whenever it has a current status from the satellites. When the board does not have a valid UTC status, it reports GPS time which is indicated by a status flag.

To display the PPS Timing View screen:

1. Select Messages PPS Timing from the View menu.

The PPS Timing View screen is displayed.



The following table provides a description of each of the displayed items:

Information	Description
Time (hh:mm:ss)	The time of the 1 PPS pulse
Date (dd/mm/yyyy)	The date of the 1 PPS pulse
UTC Offset (sec)	The time offset from UTC
Time is valid? (true/false)	The validity of the displayed time
GPS Time or UTC Time	The time type being displayed
UTC to GPS time info is current? (true/false)	An indication of whether the information to convert from GPS to UTC time is valid

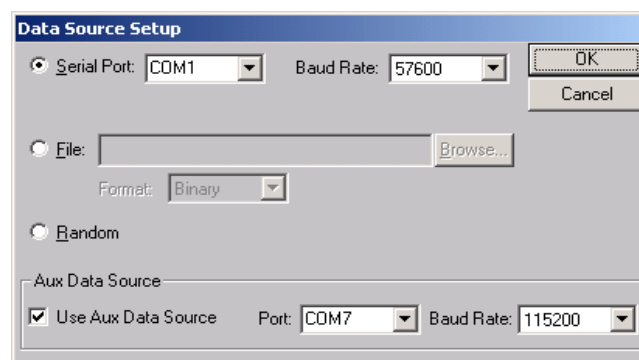
## Aux Serial Port Message Forwarding

When both the Main and Aux serial ports are open, some SiRF Binary messages received on one port are forwarded to the other port.

To use the auxiliary data source:

1. Select Data Source from the Setup menu.

The Data Source Setup screen is displayed.



2. Check the Use Aux Data Source checkbox.

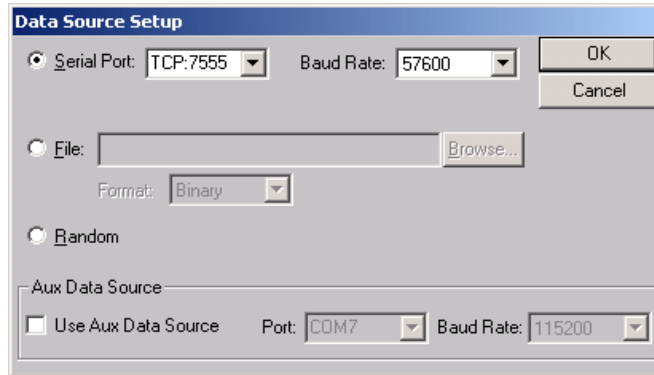
- Any SiRF Binary message received on the Aux port is sent to the Main port and logged in the .gps log file as CLM->GPS.

- When SiRF Binary msg 0x38 or 0xE8 is received on the Main serial port, it is forwarded to the Aux port and logged in the .gps log file as GPS->CLM.

### *TCP instead of Serial Port Option*

The main data source can be configured as a TCP/IP connection instead of a serial port. This is useful when the test setup is SD<->CLM<->Rx, and the connection between the CLM and Rx is a physical serial port, while the SD to CLM connection is TCP.

To do this, select TCP:7555 from the Aux Data Source Port dropdown menu.



The number 7555 is the port that is used on your local host machine (IP=127.0.0.1), in this case 7555 is the default port for the CLM test app.

Note that the log file contains two new messages when logging TCP data:

- Any data sent is logged as TCPx: 0xA0A2... instead of Tx: 0xA0A2...
- When TCP data is received a 'TCP data len=' message is logged showing the number of bytes received over TCP.

### *SiRFDrive View Screen*

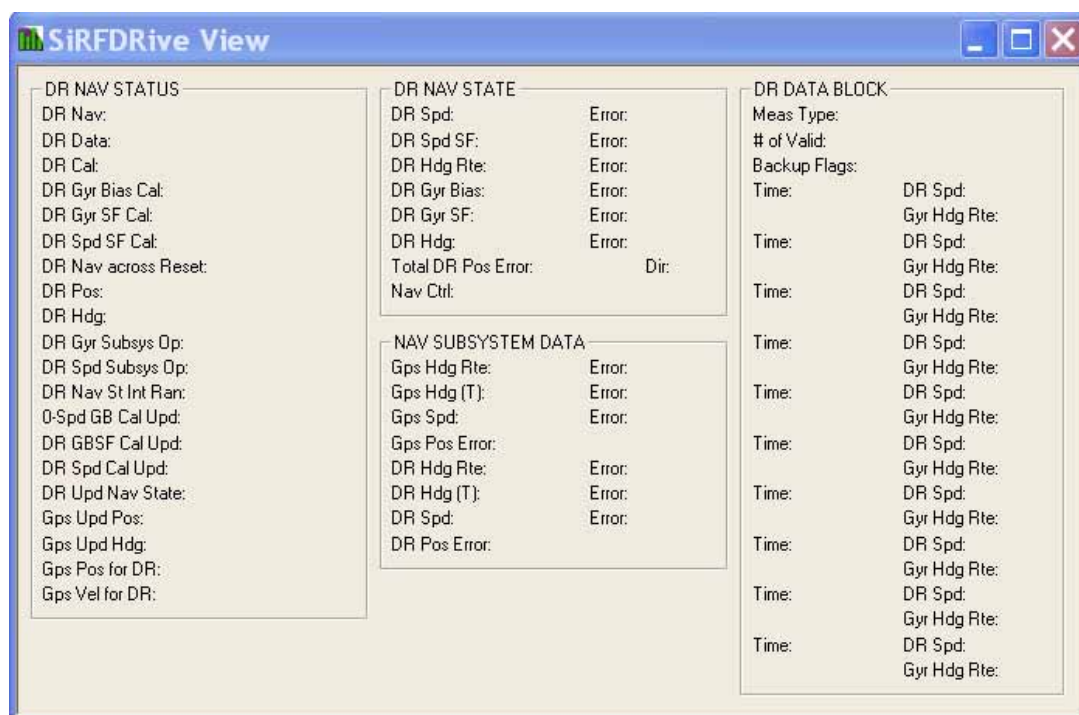
The SiRFDrive view is only available when the software SiRFDrive is selected as the target software. The SiRFDrive View screen provides the DR navigation status and DR sensor data. The screen is divided into the following fields:

- DR Navigation Status
- DR Navigation State
- DR Subsystem Data
- DR Data Block

To view the SiRFDrive View screen:

1. Select Messages | SiRFDrive from the View menu.

The SiRFDRive View screen is displayed.



### *DR NAV STATUS*

The following table provides a description of each of the displayed items for the DR NAV STATUS field.

*Table 3-7* NAV STATUS Field Items

<b>Item</b>	<b>Description</b>
DR Nav	Status of the DR navigation solution
DR Data	Status of the DR data being generated
DR Cal	Calibration status of the DR sensors
DR Gyr Bias Cal	Calibration status specifically for gyro bias
DR Gyr SF Cal	Calibration status specifically for gyro scale factor
DR Spd SF Cal	Calibration status specifically for the speed sensor scale factor
DR Nav across Reset	Conditions are appropriate to do a DR navigation after a system reset or power cycle
DR Pos	DR position status
DR Hdg	DR heading status
DR Gyr Subsys Op	Operational status of the gyro heading sensor
DR Spd Subsys Op	Operational status of the speed sensor
DR Nav St Int Ran	The DR navigation algorithm integrate the raw DR data

Table 3-7 NAV STATUS Field Items (continued)

Item	Description
0-Spd GB Cal Upd	System has performed the special bias calibration that is done when the vehicle is stationary
DR GBSF Cal Upd	Status of whether the gyro bias scale factor updated during the cycle
DR Spd Cal Upd	Status of whether the speed sensor calibration updated during the cycle
DR Upd Nav State	Indicates whether the DR has updated the navigation state
Gps Upd Pos	The GPS solution updated the navigation position during the cycle
Gps Upd Hdg	The GPS solution updated the heading during the cycle
Gps Pos for DR	GPS position valid for DR
GPS Vel for DR	GPS velocity valid for DR

**Note** – When the status is invalid, one or more of the bits appears in upper-case.

### *DR NAV STATE*

The following table provides a description of each of the displayed items for the DR NAV STATE field.

Item	Description
DR Spd	The speed computed from the DR portion of the solution (in meters/second)
DR Spd Error	Error in the DR speed (in meters/second)
DR Spd SF	Scale factor of the speed calibration
DR Spd SF Error	Error in the DR speed scale factor
DR Hdg Rte	The change in heading computed from the DR portion of the solution (in degrees/second)
DR Hdg Rte Error	Error in the DR heading rate (in degrees/second)
DR Gyr Bias	The bias or offset in the gyro heading sensor output (in degrees/second)
DR Gyr Bias Error	Error in the DR gyro bias (in degrees/second)
DR Gyr SF	Scale factor of DR gyro heading sensor scale factor calibration
DR Gyr SF Error	Error in the DR gyro scale factor calibration
DR Hdg	DR sensor heading (in degrees)
DR Hdg Error	Error in the DR heading based on the combined navigation solution (in degrees)
Total DR Pos Error	Error in the last DR position (in meters)
Dir	Forward or reverse direction based on the reverse input signal
Nav Ctrl	The DR mode that is selected

### *DR NAV SUBSYSTEM DATA*

The following table provides a description of each of the displayed items for the DR NAV SUBSYSTEM DATA field.

<b>Item</b>	<b>Description</b>
Gps Hdg Rte	Rate of change in heading based on GPS solutions (in degrees/second)
Gps Hdg Rte Error	Estimated error of the GPS heading rate (in degrees/second)
Gps Hdg (T)	Heading from true north based on GPS solutions (in degrees)
Gps Hdg (T) Error	Estimated error of the GPS heading (in degrees)
Gps Spd	Speed over ground based on GPS solutions (in meters/second)
Gps Spd Error	Estimated error of the GPS speed (in meters/second)
Gps Pos Error	Estimated error of the last GPS position (in meters)
DR Hdg Rte	Rate of change in heading based on DR sensor solutions (in degrees/second)
DR Hdg Rte Error	Estimated error of DR sensor heading rate (in degrees/second)
DR Hdg (T)	Heading from true north based on DR sensors (in degrees)
DR Hdg (T) Error	Estimated error of DR sensor (in degrees)
DR Spd	Speed over ground based on DR sensor solutions (in meters/second)
DR Spd Error	Estimated error of DR sensor speed (in meters/second)
DR Pos Error	Estimated error of the last DR position solution (in meters)

### *DR DATA BLOCK*

The following table provides a description of each of the displayed items for the DR DATA BLOCK field.

<b>Item</b>	<b>Description</b>
Meas Type	Measurement type
# of Valid	Number of valid DR sensor measurements from the last block of 10 measurements
Backup Flags	The state of the reverse signal for the corresponding data set
Time	Time of each measurement (in milliseconds)
DR Spd	Speed measured from the DR sensor (in meters/second)
Gyr Hdg Rte	Raw heading rate from the gyro (in degrees/second)

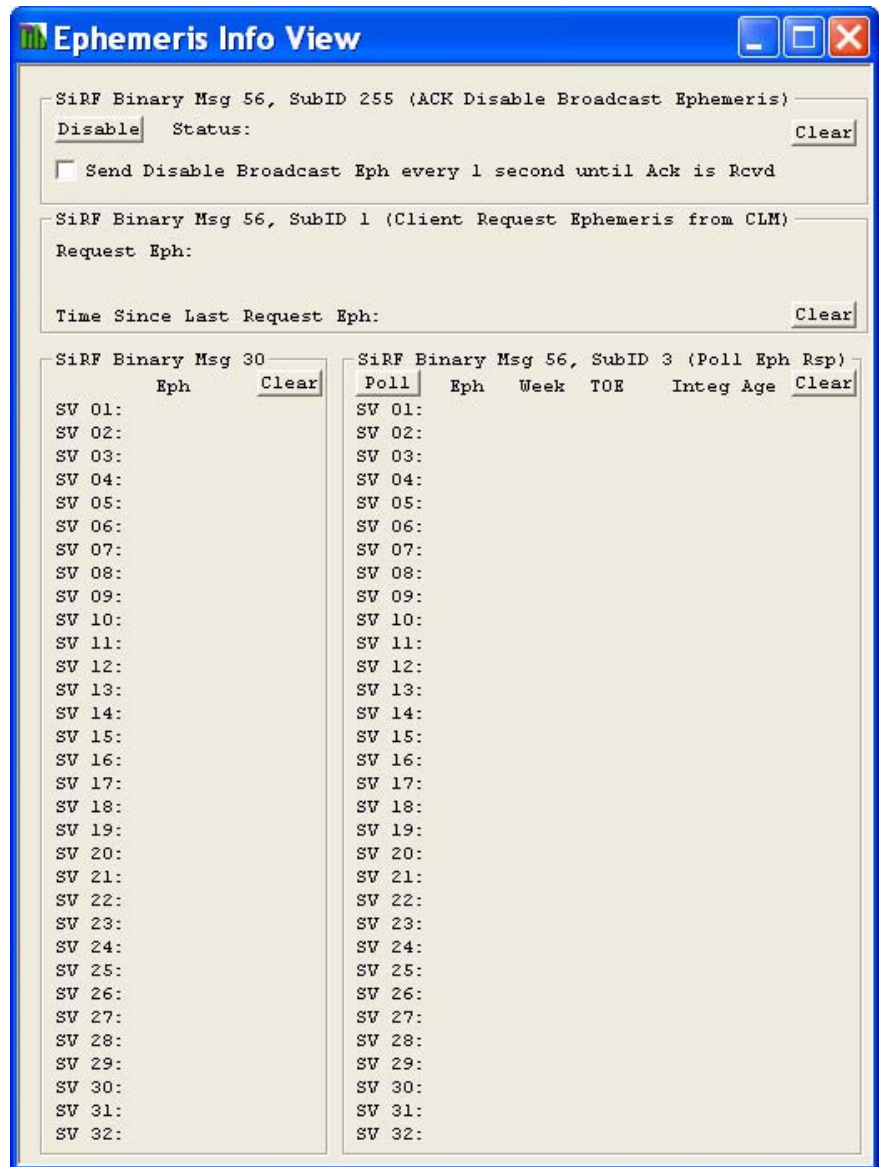
## Ephemeris Information

The Ephemeris Info View is only available when 3.2 is selected as the target software in the Setup menu.

To view the Ephemeris Info View screen:

1. Select Messages | Ephemeris Info from the View menu.

The Ephemeris Info View screen is displayed.



There are four sections in the Ephemeris View window:

1. The first section displays the message: Status: Disable Broadcast Eph ACK rcvd. when the disable broadcast eph message is received while the Ephemeris Info window is open. Otherwise this section displays Status.



- Disable sends msg 0xE8, subID 0xFF, with debug flags data = 0x01000000 (this is the same as selecting Action/Disable Broadcast Eph from the dropdown menus).
  - Clear resets the display message to Disable Broadcast Eph.
  - When the checkbox Send Disable Broadcast Eph every 1 second until Ack is Rcvd is checked, then SiRFDemo sends the disable broadcast eph msg every 1 second until the ack is received from the receiver, at which time the disable broadcast eph every second checkbox becomes unchecked.
2. The second section displays the contents of the client's T-message (request for ephemeris from the CLM). When a T-message is received in SiRFDemo, it records the PC time of the event and shows a timer indicating the time elapsed since the last T-message was received. Clear clears the display for this section of the window.
  3. The Eph field from msg 30 for each SV that is reported. This section only updates when the receiver's NavLib output is enabled. To enable NavLib output, send a snap start with the nav lib option checked. Clear clears the display for this section of the window.
  4. The response messages to a poll ephemeris state message are shown in a table of SVIDs vs 5 fields; ephemeris flag, eph week num, TOE (time of week in 16 second increments), Integrity of ephemeris, and Age (if an extended ephemeris is used).

Poll sends SiRF Binary msg 0xE8, subId 0x02 with SvMask= 0xFFFFFFFF, which requests the ephemeris state for all SVs, 1-32.

---

**Note** – Poll has the same effect as selecting Poll | Ephemeris State. Clear clears the display for this section of the window.

---

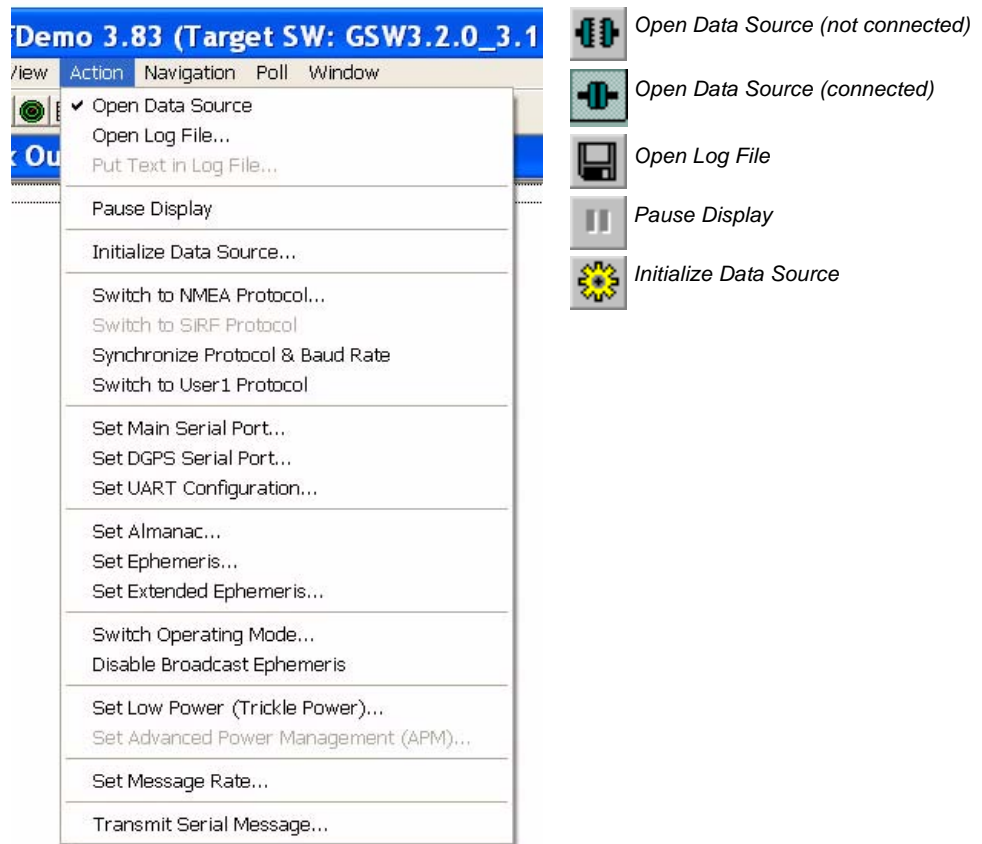
---

**Note** – The response messages fields may contain either broadcast ephemeris data or extended ephemeris data.

---

## The Action Menu

This section describes the SiRFDemo functions on the Action menu:



- “Opening a Data Source” on page 3-27
- “Opening a Log File” on page 3-27
- “Adding Text to a Log File” on page 3-30
- “Pausing the Display” on page 3-30
- “Initializing the Data Source” on page 3-31
- “Switching to the NMEA Protocol” on page 3-36
- “Switching to the SiRF Protocol” on page 3-37
- “Synchronizing Protocol and Baud Rate” on page 3-37
- “Switching to User1 Protocol” on page 3-38
- “Setting the Main Serial Port” on page 3-38
- “Setting the DGPS Serial Port Parameters” on page 3-38
- “Setting the UART Configuration” on page 3-39
- “Uploading an Almanac to a GPS Receiver” on page 3-41
- “Uploading an Ephemeris to a GPS Receiver” on page 3-41
- “Opening an Extended Ephemeris File” on page 3-42

- “Switching Operating Mode” on page 3-43
- “Disabling a Broadcast Ephemeris” on page 3-44
- “Setting Low Power Parameters” on page 3-45
- “Setting Advanced Power Management Options for SiRFXTrac” on page 3-48
- “Setting the Message Rate” on page 3-48
- “Transmitting a User Defined Serial Message” on page 3-49

---

**Note** – All values that appear in the dialog boxes under this menu are default values only. To determine the current settings of all navigation parameters, refer to Section , “Polling the Navigation Parameters,” on page 60.

---

### *Opening a Data Source*

Before any data can be received from or sent to a GPS receiver a communications channel must be established or a data source must be opened.

To open a data source:



1. Click the Connect/Disconnect button or select Open Data Source from the Action menu.



2. Click the Connect/Disconnect button again or select Open Data Source from the Action menu to disconnect communication to the GPS receiver.

### *Opening a Log File*

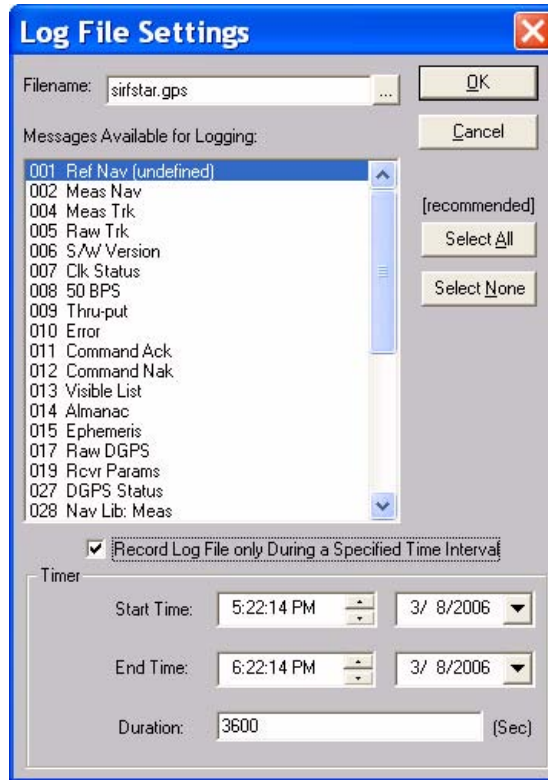
The log file function provides the ability to log selected information from a connected GPS receiver and store it to a file.

To open a file and select messages to log:



1. Click the Log File Settings button or select Open Log File from the Action menu.

The Log File Settings window is displayed.



2. Select each message you want to log to a file by clicking the required message. Select all of the messages at once by clicking Select All.

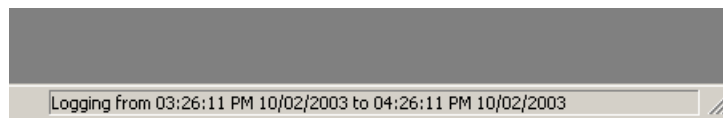
---

**Note** – Only records that are selected are logged to a file. When logging all available messages, use 38400 Baud or higher. This ensures that no data is lost during logging.

---

3. Check the Record Log File Only During a Specified Time Interval checkbox to designate a particular logging interval and enter the start time, stop time, and date.
4. Check the Record Log File Only During a Specified Time Interval checkbox and enter in the Duration field a particular duration (in seconds) after which the logging session is closed.
5. Click OK to begin logging the selected messages or Cancel to abort opening a file.

During logging, logging status is displayed at the bottom of the SiRFDemo screen.



Each of the available message types and a brief description is provided in Table 3-8.

*Table 3-8* Messages That Can Be Logged to a File

<b>Messages</b>	<b>Description</b>
001 Ref Nav (undefined)	Reference Navigation
002 Measured Navigation	Time, position, velocity,...
004 Measured Tracking	Satellite status and C/No
005 Raw Track Data	Not supported by SiRFstarII
006 SW Version	Software version of the connected GPS receiver
007 Clock Status	Board clock performance
008 50 BPS Subframe Data	Satellite ephemeris and almanac data
009 Throughput	CPU throughput usage
010 Error	Various error messages
011 Command Ack	Acknowledgment of received commands
012 Command Nak	Input message failures
013 Visible List	Satellite visibility list (based on current almanac)
014 Almanac	Satellite almanac data
015 Ephemeris	Satellite ephemeris data
017 Raw DGPS	Differential GPS corrections in RTCM format
019 Rcvr Params	Parameters affecting navigation solutions
027 DGPS Status	Status of differential GPS correction
028 Nav Lib: Meas	Observed satellite measurement data
029 Nav Lib: DGPS	Received differential GPS correction information
030 Nav Lib: SV State	Observed velocity, position and clock information
031 Nav Lib: Init	Startup initialization information
041 Geodetic Nav	Navigation data
045 ADC / ODO	Analog Digital Converter / Odometer
046 Test Mode	Diagnostic mode
048 SiRFDRive	SiRFDRive data
050 SBAS Status	SBAS operation data
052 PPS Timing	Time information for the 1 PPS output
055 Test Mode 4 Trk Data	Diagnostic mode
056 SEA Output	SiRF extended ephemeris output message
172 Wheeltick	SiRFDrive dead reckoning

Table 3-8 Messages That Can Be Logged to a File (continued)

Messages	Description
225 Stats Channel	Reports stats about startup time and encrypted messages
232 SEA Input	SiRF extended ephemeris input message
255 Debug	Various development information

### Adding Text to a Log File

During logging of data, it is possible to place a text entry into the file during logging.

**Note** – The Put Text Into Log File option is only available while a log file is being collected.

To add a text entry into the current log file:

1. Select Put Text Into Log File from the Action menu.

The Enter Text Message To Insert Into Log File screen is displayed.



2. Enter the text to be placed into the text file.
3. Click OK.

The log file is annotated with a line displayed the following format:

"User Text: hh:mm:ss <entered text>"

### Pausing the Display

All of the open windows can be paused to allow easy viewing of the existing data without receiving any further data.

To pause all of the open windows:



1. Click the Pause button or select Pause Display from the Action menu.

**Note** – No data is logged while the display is paused.

## Initializing the Data Source

You can reset or initialize a connected GPS receiver directly through the SiRFDemo software. This function may be used to demonstrate or evaluate a product's recovery ability under different circumstances.

The Receiver Initialization screen offers additional features depending on which target is selected in the Setup | Target SW menu.

When SiRFDrive is selected in Setup | Target SW menu, see "Initializing SiRFDrive Navigation Parameters" on page 3-34.

When SiRFXTrac, 3.0&3.1, or 3.2, is selected in Setup | Target SW, see "Initializing SiRFXTrac, 3.0&3.1, and 3.2 Navigation Parameters" on page 3-35.

To perform a reset or allow Nav Lib or Development data to be output from a receiver:



1. Click the reset button or select Initialize Data Source from the Action menu.

The Receiver Initialization screen is displayed.

**Receiver Initialization**

Position: X (ft): 0  
 Load... Y (ft): 0  
 Z (ft): 0  
 Clock offset (Hz): 0

Use current PC time  
 UTC offset (s): 13  
 Extended Week #: 0  
 Time of week (s): 0  
 Channels: 12

Periodic reset  
 (0; 5 or more s): 0

Reset mode  
 Snap Start  
 Hot Start  
 Warm Start (No init)  
 Warm Start (Init)  
 Cold Start  
 Factory Reset

Messages  
 Enable Nav Lib Data  
 Enable Debug Data  
 Clear User Data in Battery-Backed RAM

Send  
 Cancel

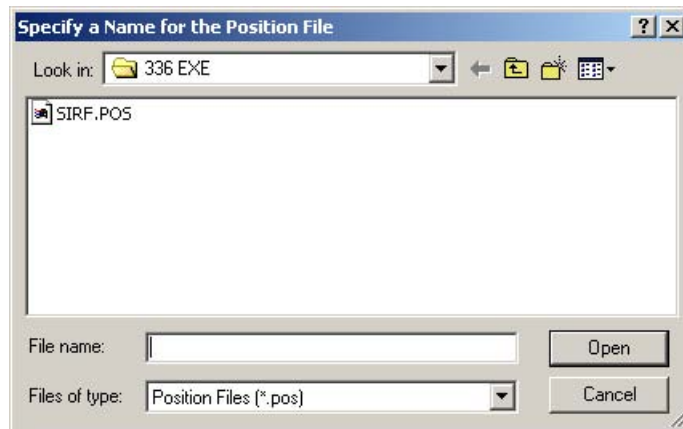
2. Select type of Reset Mode by clicking the associated radio button.

Option	Description
Snap Start	The GPS receiver restarts by using the values stored in the internal memory of the GPS receiver. The following validated parameters are used: time, position, almanac, and ephemeris.
Hot Start	The GPS receiver restarts by using the values stored in the internal memory of the GPS receiver; validated ephemeris and almanac.
Warm Start (No Init)	This option has the same functionality as Hot Start except that it clears the ephemeris data and retains all other data.
Warm Start (Init)	This option clears all initialization data in the GPS receiver and subsequently reloads the data that is currently displayed in the Receiver Initialization Setup screen. The almanac is retained but the ephemeris is cleared.
Cold Start	This option clears all data that is currently stored in the internal memory of the GPS receiver including position, almanac, ephemeris, and time. The stored clock drift however, is retained.
Factory Start	This option clears all data including position, almanac, ephemeris, time, as well as the stored clock drift. All GPS receiver parameters are also set back to the factory defaults.

**Note** – When Cold start is selected, all GPS receiver settings are reset to factory defaults with the exception of low power settings.

- When you selected the Warm Start (Init) reset mode, enter or load the X, Y, and Z coordinates for the current position of the GPS receiver.
- Load a file containing the X, Y, Z coordinates by clicking Load.

The Specify a Name for the Position File window is displayed.



- Select the sample `sirf.pos` configuration file.



---

**Note** – An example file called `sirf.pos` is provided with the SiRFDemo software. See “Modifying the Sample `sirf.pos` File” on page B-1 for more information on creating a valid `.pos` file.

---

6. Click Open. The Receiver Initialization screen is displayed again.
7. Enter 96,000 in the Clock field (96,000 is a typical clock drift value of the crystal in the GPS receiver).

---

**Note** – When you enter zero in the Clock field, the GPS receiver uses its last stored value, or a default of 96,000 when no prior stored value is available.

---

8. Click on or off the Use current PC time checkbox.

---

**Note** – It is recommended that you use PC time (it is assumed that the date and time on your computer are set correctly).

---

9. When you select Use current PC time, enter the UTC offset for your location in the UTC offset field.
10. When you do not select Use current PC time, enter the number of the week and the time of the week in the corresponding fields.
11. Enter the number of channels in the Channel field.

You can specify from 1 to 12 channels.

12. Check Enable Nav Lib Data to log navigation library data.
13. Check Enable Development Data to turn on message 255.

The content of this message is displayed in the Development Data View. The Baud rate of the SiRFDemo software and the attached GPS receiver is automatically changed to 57600 to ensure sufficient through-put to accommodate the quantity of data.

---

**Note** – The Development Data output by a GPS receiver is required to assist in the analysis and debug of system performance problems. It is highly recommended to enable Development Data during development and testing in the event that support is needed from SiRF.

---

14. Enter a periodic reset value in the Periodic Reset field to automatically reset the board at the defined interval.  
  
Valid values are 5 to 600 seconds. A value of zero cancels the periodic reset function.
15. Check Clear User Data in Battery-Backed RAM to force user defined data to be reset to their default values
16. Click Send to initialize or Cancel to exit.

When SiRFNav & SiRFDRive is selected as the target software, the SiRFDRive Navigation Initialization option is available instead of Receiver Initialization.

You can reset or initialize a GPS receiver directly through the SiRFDemo software. This function may be used to demonstrate or evaluate the Board's recovery ability under different circumstances.

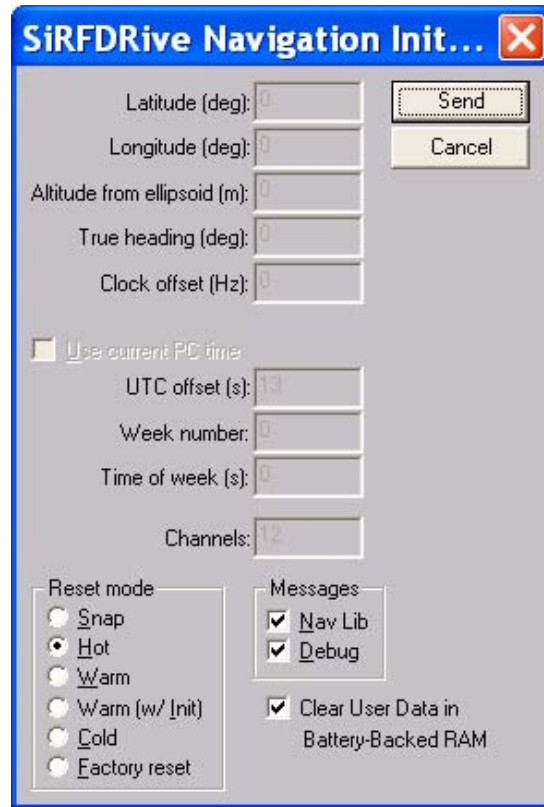
The SiRFDRive Navigation Initialization enables you to specify location and heading after a Warm /w Init reset. This data aids in acquiring the first fix.

### Initializing SiRFDRive Navigation Parameters



1. Click the reset button or select SiRFDRive | Navigation Initialization from the Navigation menu.

The SiRFDRive Navigation Initialization screen is displayed.



Select type of Reset mode by clicking the associated radio button. The following table describes the reset types.

Table 3-9 Reset Options

Reset Mode	Description
Hot	GPS receiver restarts by using values stored in internal memory of the board. The stored ephemeris and almanac are valid.
Warm	Same functionality as Hot Start except that it clears the ephemeris data and retains all other data.

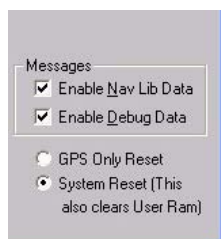
Table 3-9 Reset Options (continued)

Reset Mode	Description
Warm (w/Init)	Clears all initialization data in the board and updates the data that is entered in the Initialization screen. The almanac is retained but the ephemeris is cleared.
Cold	Clears all data that is currently stored in the internal memory of the board, including position, almanac, ephemeris, and time. The stored clock drift is retained.
Factory Reset	Clears all data including position, almanac, ephemeris, time, and stored clock drift. All board parameters are also set back to factory defaults.

- When selecting Warm (w/Init) reset mode, enter the Latitude, Longitude, Altitude, and Heading for the current position of the GPS receiver.
- Click Send to send the command.

### Initializing SiRFXTrac, 3.0&3.1, and 3.2 Navigation Parameters

When SiRFXTrac, 3.0&3.1, or 3.2 are selected from the Setup | SW menu, the Receiver Initialization screen offers the additional options described below.



SiRFXTrac and 3.0&3.1 reset options located in the bottom right corner of the Initialization screen



The 3.2 reset options located in the bottom right corner of the Initialization screen

Select a Reset option by clicking the associated radio button. The following table describes the additional reset options available when SiRFXTrac, 3.0&3.1, or 3.2 are selected from the Setup | SW menu.

Reset Mode	Description
GPS Only Reset	Only resets the GPS code without disturbing user defined data
System Reset	Forces the code to branch to the start of the Reset Vector (0x0). This causes GPS and user defined data to be reset to their default values
Disable Broadcast Ephemeris	This causes the receiver to not use broadcast ephemeris and to only utilize the ephemeris sent to the receiver. This feature is used for testing the extended ephemeris.

## Switching to the NMEA Protocol

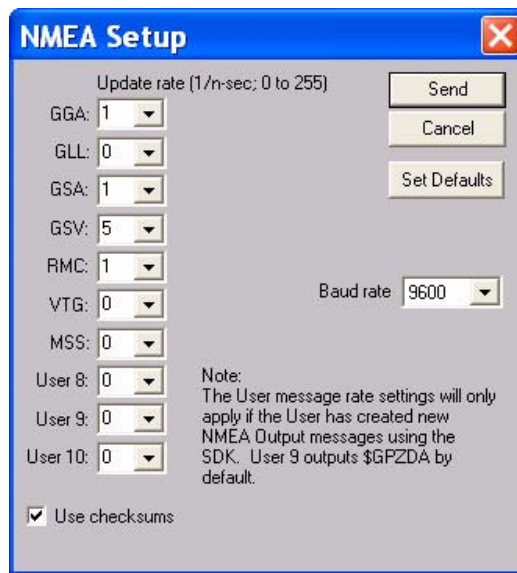
SiRF GPS products support a subset of the NMEA protocol. Rather than operating in the SiRF binary protocol, you can change the protocol to NMEA for the port that is currently connected.

**Note** – When operating in NMEA mode, many of the SiRFDemo display windows and functions are not supported.

To change the protocol to NMEA for the port currently connected to your computer:

1. select Switch to NMEA Protocol from the Action menu.

The Select NMEA Messages screen is displayed.



2. Select the NMEA Messages by clicking the required message.

Option	Description
GGA	Time, position, and fix related data for a GPS board/receiver.
GLL	Latitude and longitude of present position, time of position fix and status.
GSA	GPS board/receiver operating mode, satellites used in the position solution, and DOP values.
GSV	The number of GPS satellites in view satellite ID numbers, elevation, azimuth, and SNR values.
RMC	Time, date, position, course and speed data provided by the GPS board/receiver.
VTG	The actual course and speed relative to the ground.
MSS <sup>1</sup>	Signal-to-noise ratio, signal strength, frequency, and bit rate from a radio-beacon receiver.

Option	Description
User 8	Reserved for a user defined NMEA string.
User 9	Reserved for a user defined NMEA string.
User 10	Reserved for a user defined NMEA string.

1. When the attached GPS receiver does not support an internal beacon receiver, the content of the MSS messages are not available.

3. Select the update rate for each NMEA message from the corresponding Update Rate dropdown menu.

Each NMEA message can be output at a maximum rate of one per second and at a minimum rate of one per 255 seconds.

4. Select the Baud rate from the Baud Rate dropdown menu.

5. Click Send to save or Cancel to exit.

---

**Note** – When NMEA is selected as the operating protocol, the output messages can be viewed in the Development Data screen. It can also be logged by using the same technique as a SiRF binary file. Select 255-Development in the Log File Settings screen and check Enable Development Data in the Messages field of the Receiver Initialization screen.

---

### *Switching to the SiRF Protocol*

When operating in SiRF binary protocol, this menu item is unavailable. It can be used, however, when operating in NMEA protocol to change the protocol to SiRF binary.

To change the operating protocol from NMEA to SiRF binary:

1. select Switch to SiRF Protocol from the Action menu to return to the SiRF binary protocol.

### *Synchronizing Protocol and Baud Rate*

All GPS receiver settings, including selected protocol and serial port settings, are held in battery-backed SRAM. When the attached GPS receiver is power cycled, these settings remain. When the GPS receiver is left in an unknown state, it is difficult to regain communication.

The synchronize protocol and Baud rate function attempts to change the serial port settings of the GPS receiver to a known state of SiRF binary and 38400 Baud. This is done by issuing commands to the receiver using all possible Baud rates and NMEA and SiRF binary protocols. After this is complete, SiRFDemo resumes operation using SiRF binary protocol and 38400 Baud. Since the receiver should also be operating with the same settings at this time, communication resumes.

### *Switching to User1 Protocol*

When a user protocol is defined and implemented in the version of software running, the Switch to User1 menu item can be used to enable the user defined protocol.

When Switch to User1 is selected, the target platform changes to the user defined protocol, but SiRFDemo continues to operate in SiRF Binary.

---

**Note** – When the target platform is operating in the user defined protocol, there is no direct method through SiRFDemo to switch the target platform back to SiRF Binary. An application based on the user protocol must be used, or the Send Serial Message ability may be utilized.

---

To change the operating protocol to a user defined protocol:

1. Select Switch to User1 Protocol from the Action menu.

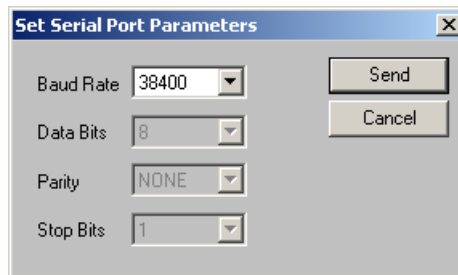
### *Setting the Main Serial Port*

Use the Set Main Serial Port function to change the Baud rate of the serial port connected to the GPS receiver and the serial port of the computer.

To change the Baud rate of the port used by the GPS receiver and the computer:

1. Select Set Main Serial Port from the Action menu.

The Set Serial Port Parameters screen is displayed.



2. Select the Baud rate from the dropdown menu.
3. Click Send to reset the GPS receiver and computer serial port to start communicating using the new Baud rate.

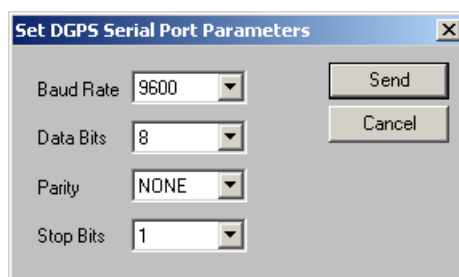
### *Setting the DGPS Serial Port Parameters*

The Set DGPS Serial Port Parameters function configures the second serial port (the serial port not currently used by the SiRFDemo software) of the attached GPS receiver for reception of RTCM data.

To configure the available port for RTCM reception:

1. Select Set DGPS Serial Port from the Action menu.

The Set DGPS Serial Port Parameters screen is displayed.



2. Select the Baud rate, data bits, parity, and stop bits for the DGPS serial port parameters from each dropdown menu.
3. Click **Send** to reset the connected GPS receiver and change the protocol of the second port to RTCM and the serial port settings to the selected values.

---

**Note** – The differential correction data source must be configured separately. See “Defining the Data Source” on page 3-3.

---

### *Setting the UART Configuration*

The UART configuration control supports four unique UARTs. You can configure UART settings such as protocol, Baud rate, data bits, parity, and stop bits using the UART configuration control.

The UART configuration control is provided primarily for system developers. Even though control over four UARTs is provided, most products only support two UARTs.

To set the UART configuration of the attached SiRF GPS product for the two supported UARTs:

1. Select Set UART Configuration from the Action menu.

The UART Configuration screen is displayed.



**Note** – The COM ports supported in a standard GPS receiver are UART 0 (CPU SCIO 0, COM-A) and UART 1 (CPU SCIO 1, COM-B).

2. Check the Set checkbox for each UART you want to apply changes to.

When the Set checkbox is not checked, the existing configuration remains in its current state.

3. Select SiRF binary, NMEA, RTCM, or No I/O from the Protocol selection list.

Select No I/O from the Protocol dropdown menu to disable the data output from any port. Each protocol can only be supported by one UART. You cannot configure two different ports to use the same protocol.

4. Select the appropriate serial communication parameters using the selection lists for Baud rate, data bits, parity, and stop bits.
5. Click Send to accept or Cancel to exit.



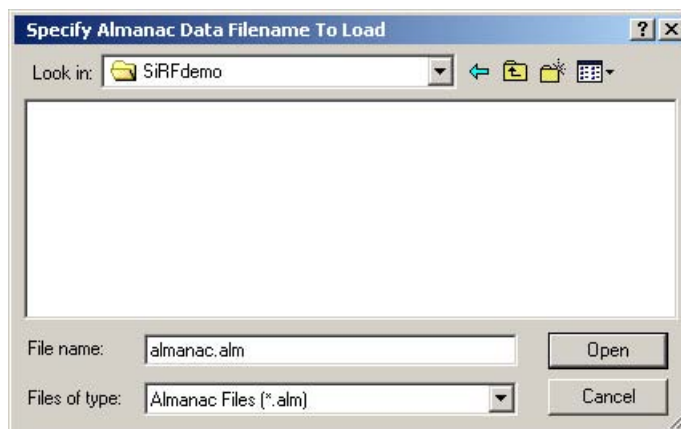
## Uploading an Almanac to a GPS Receiver

An almanac file is used by a GPS receiver to assist with locating and tracking available satellites. When a current almanac file does not exist in the GPS receiver due to a cold start or when it is not used for a long period of time, loading a recent almanac file assists the GPS receiver in locating and tracking satellites.

To upload an almanac file to a GPS receiver:

1. Select Set Almanac from the Action menu.

The Specify Almanac Data Filename To Load screen is displayed.



2. Select the file you want to use.
3. Click Open.

---

**Note** – The almanac file must be in the same format as polled from a SiRF GPS receiver. To download an almanac file from a GPS receiver, see “Downloading an Almanac File” on page 3-61.

---

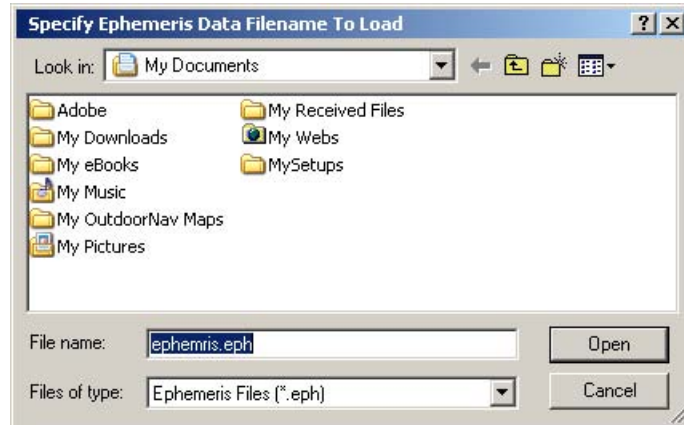
## Uploading an Ephemeris to a GPS Receiver

An ephemeris is used by a GPS receiver to calculate the position of the satellites and hence, the position of the GPS receiver. When an ephemeris file is not available, it must be downloaded from a GPS satellite. To eliminate the time required to download this information from the GPS constellation, a current ephemeris file can be uploaded to a GPS receiver using the SiRFDemo software.

To upload an ephemeris file to a GPS receiver:

1. Select Set Ephemeris from the Action menu.

The Specify Ephemeris Data Filename To Load screen is displayed.



2. Select the file you want to use.
3. Click Open.

---

**Note** – The ephemeris file must be in the same format as polled from a SiRF GPS receiver. To download an ephemeris file from a GPS receiver, see “Downloading an Ephemeris File” on page 3-61.

---

### *Opening an Extended Ephemeris File*

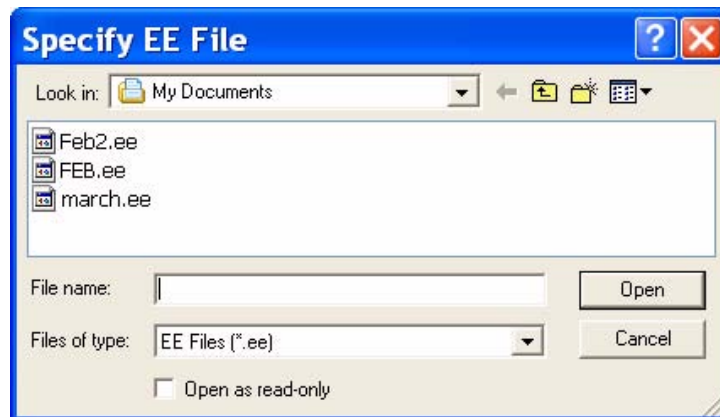
An extended ephemeris is used by a GPS receiver to quickly calculate a position fix while the GPS receiver is still downloading a broadcast ephemeris. When an extended ephemeris file is not available or has expired, it must be downloaded from the SiRFInstantFix server.

See the *SiRFGetEE User Guide* for instructions about getting an extended ephemeris.

To open an extended ephemeris file:

1. Select Extended Ephemeris from the Action menu.

The Specify EE File screen is displayed.



2. Select the file you want to use.

3. Click Open.

## *Switching Operating Mode*

It is possible to place a GPS receiver into a test operating mode. This mode allows a single selected satellite to be tracked by all 12 channels of the GPS receiver.

To place a GPS receiver into test mode:

1. Select Switch Operating Mode from the Action menu.

The Operating Mode screen is displayed.



2. Select Test 1, Test 2, Test 3, or Test 4 when you want to track a specific satellite on all channels and output test results. Test 2 outputs additional data to that of Test 1.

---

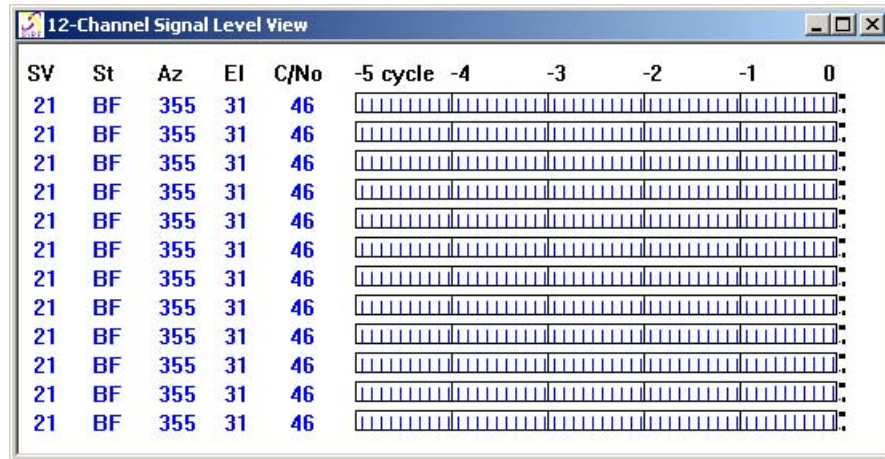
**Note** – Test 1, Test 2, Test 3, and Test 4 enables Testmode 1, Testmode 2, and Testmode 3 data respectively. For a full description of each testmode, refer to the *SiRF Binary Reference Manual*.

---

3. In the Period field, enter the output rate of the test reports in seconds.
4. Enter the SV number that you want to be tracked by all 12 channels of the GPS receiver.
5. Select Normal (default) to track all available satellites.
6. Click Send to send the command to the GPS receiver.

When the GPS receiver is changed to a test mode, every channel on the receiver tracks only the satellite specified.

This can be confirmed by viewing the 12-Channel Signal Level view.

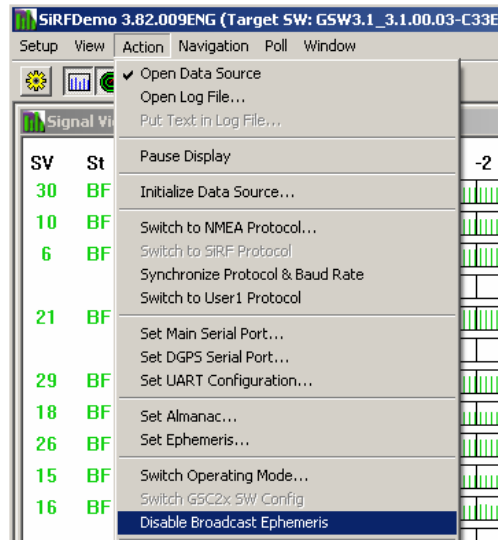


### Disabling a Broadcast Ephemeris

The Disable Broadcast Ephemeris is only available when 3.2 is selected as the target software in the Setup menu.

To disable a broadcast ephemeris:

Select Disable Broadcast Ephemeris from the Action menu.



Selecting this dropdown menu option sends msgID 0xE8, subID 0xFF, with debug flags data = 0x01000000

A broadcast ephemeris can also be disabled by checking the Disable Broadcast Eph checkbox in the Receiver Initialization screen by selecting Action Menu | Initialize Data Source. This sends msg 0xE8, subId 0xFF every second to the main serial port until the Ack message 0x38, 0xFF is received.

Note: The Ephemeris Info screen shows whether SiRFDemo is still sending the disable broadcast eph msg. See also “Ephemeris Information” on page 3-24.

## Setting Low Power Parameters

---

**Note** – Not valid when operating in SiRFDRive mode.

---

The GPS receiver can operate in three modes:

Mode	Description
Full Power	Full power mode is the standard operating mode. Power is supplied to the receiver continuously and the GPS receiver continues to operate without an interrupt.
TricklePower	In TricklePower mode, the power to the SiRF chipset is cycled periodically, so that it operates only a fraction of the time. Power is applied only when a position fix is scheduled.
Push-to-Fix	In Push-to-Fix mode, the GPS receiver is generally off, but turns on frequently enough to collect ephemeris data to maintain the GSP1 real-time clock calibration so that, upon user request, a position fix can be provided quickly after power-up.

---

**Note** – Low power mode is not supported by SiRFDRive. This menu is disabled when SiRFDemo is set up for SiRFDRive.

---

### TricklePower

In this mode, the power to the GRF2i/LP chip is cycled regularly, according to two user-specified parameters:

- Update Rate
- OnTime
- Maximum Off Time
- Maximum Search Time

During TricklePower operation, the GRF2i/LP chip is powered on for OnTime (in milliseconds), then powered off for a specified number of milliseconds as determined by the update rate. This cycle repeats indefinitely.

The GSP2e/LP chip is not explicitly powered down, but its primary operation is driven by the GPS clock generated by the GRF2i/LP, so it draws very little power while the GRF2i/LP is powered down. The real-time clock (RTC) portion of the GSP2e/LP continues operation at all times, and is used to generate the interrupt that turns everything back on.

The microprocessor on which the SiRF code executes is not explicitly powered down. After the OnPeriod has elapsed, the processor continues operating long enough to complete its navigation tasks, then puts itself in sleep mode until it is reawakened by the RTC-generated wake-up interrupt.

The default parameter values are:

- Update Rate = 1 second
- On Time = 200 ms

- Maximum Off Time = 30,000 ms
- Maximum Search Time = 120,000 ms

### *Adaptive TricklePower*

An Adaptive TricklePower option is also available. Adaptive TricklePower is a feature of the software that allows the receiver to operate in TricklePower when possible, but then switch to full power when difficult environments are encountered. Once the operating environment improves, the receiver returns to TricklePower mode. This function results in improved navigation performance in difficult environments while still minimizing power use in good operating environments.

### *Push-to-Fix*

For applications where a position fix is required on demand (that is, not continuous), the Push-to-Fix mode is the most appropriate mode of operation for power sensitive situations. In this mode, the receiver turns on periodically according to the user specified parameter:

Push-To-Fix Period

When the receiver turns on, the ephemeris records are updated and the clocks calibrated. When all internal updating tasks are complete, the receiver powers itself off (except for RTC) and schedules the next wake-up period.

The default parameter is:

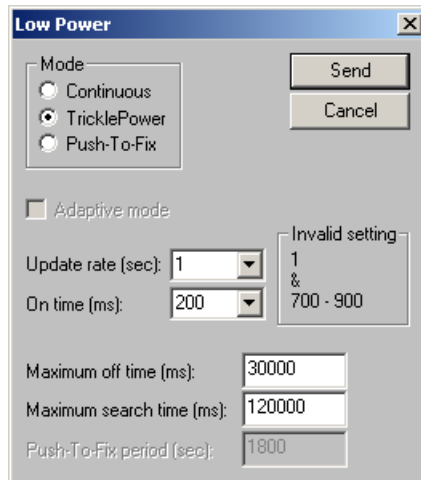
Push-To-Fix Period = 1,800 seconds

When the GPS receiver is power cycled externally, a navigation solution is be available to the user in three seconds.

To set the GPS receiver to TricklePower mode:

1. Select Set TricklePower Parameters from the Action menu.

The Low Power screen is displayed.



2. Select the required operating mode.

3. When TricklePower is selected, select the Update Rate and On Time from the dropdown menu and enter the Maximum Off Time and Maximum Search Time.
4. Select the Adaptive mode checkbox when Adaptive TricklePower operation is required.
5. Click Send to activate selection.

Table 3-10 shows the Update Rate and On Time combinations that the GPS receiver supports when in TricklePower.

Table 3-10 TricklePower: Update Rate and On Time

On Time (ms)	Update Rates (seconds)									
	1	2	3	4	5	6	7	8	9	10
200	✓	✓	✓	✓	✓	✓	✓	✓	✓	✓
300	✓	✓	✓	✓	✓	✓	✓	✓	✓	✓
400	✓	✓	✓	✓	✓	✓	✓	✓	✓	✓
500	✓	✓	✓	✓	✓	✓	✓	✓	✓	✓
600	✓	✓	✓	✓	✓	✓	✓	✓	✓	✓
700		✓	✓	✓	✓	✓	✓	✓	✓	✓
800		✓	✓	✓	✓	✓	✓	✓	✓	✓
900		✓	✓	✓	✓	✓	✓	✓	✓	✓

To conserve power at start-up, you can control how long (Maximum Search Time) the system should attempt to acquire satellites and navigate, and how long (Maximum Off Time) the GPS receiver should remain off (sleep mode) before making another attempt to navigate. Maximum times are in ms.

Example: Maximum Off Time 30000 ms (default)  
Maximum Search Time 300000 ms (default)

Scenario 1: System is turned on, but does not acquire Svcs (no antenna connected).

Result: System searches for 120000 ms, sleeps for 30000 ms, searches again for 120000 ms, etc.

Scenario 2: System is turned on and acquires Svcs, but does not navigate.

Result: System searches for 120000 ms, sleeps for 30000 ms, searches again for 120000 ms, etc.

Scenario 3: System is turned on, acquires and navigates.

Result: Sleep mode is disabled.

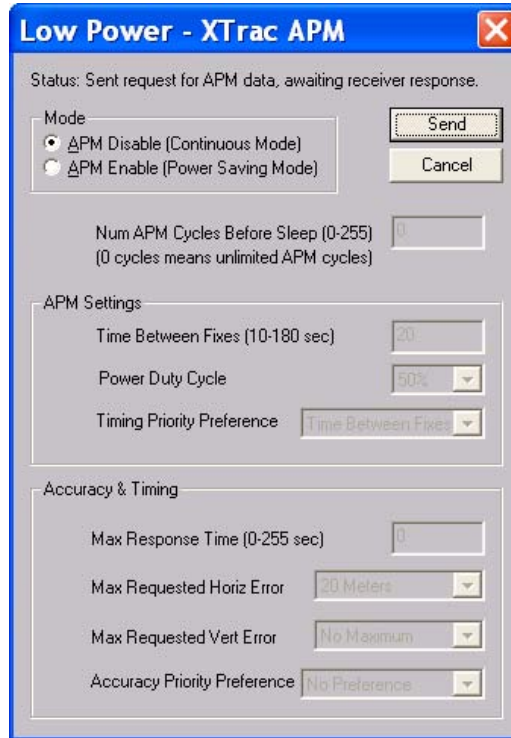
## Setting Advanced Power Management Options for SiRFXTTrac

When using SiRFXTTrac, the Advanced Power Management (APM) mode can be enabled or disabled. When the APM mode is enabled, settings for accuracy and timing plus many other power management options are available.

To view the SiRFXTTrac APM settings:

1. Select Set Advanced Power Management (APM) from the Action Menu.

The XTrac APM screen is displayed.



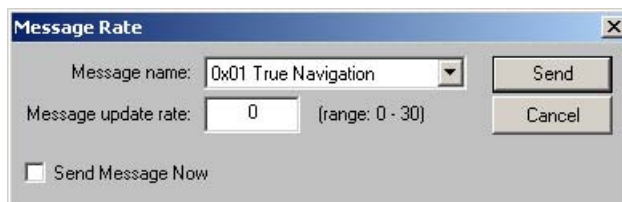
## Setting the Message Rate

You can configure each SiRF binary output message so that it is output using a specified frequency.

To set the SiRF binary output rates:

1. Select Set Message Rate from the Action Menu.

The Message Rate screen is displayed.





2. Select the appropriate SiRF binary message from the Message name dropdown menu.
3. Enter the rate at which you want the selected SiRF binary message to be output.
4. Check the Send Message Now checkbox to send the message now.
5. Click Send.

---

**Note** – The message rate is based on navigation cycles, not seconds. For example, in TricklePower mode at an update rate of two seconds, selecting five as the message output rate outputs the selected message every Ten seconds. Ten seconds, in this case, is equivalent to five navigation cycles. An Update Rate of zero disables the output of that message.

---

The decrement of the navigation cycle counters for each message begins when the GPS receiver accepts and verifies the input command. Each message is done separately and no mechanism is currently in place to synchronize message output. Message counters are stored in DRAM so they are preserved over hot and warm software resets but revert to default values over power cycles, cold, and factory resets.

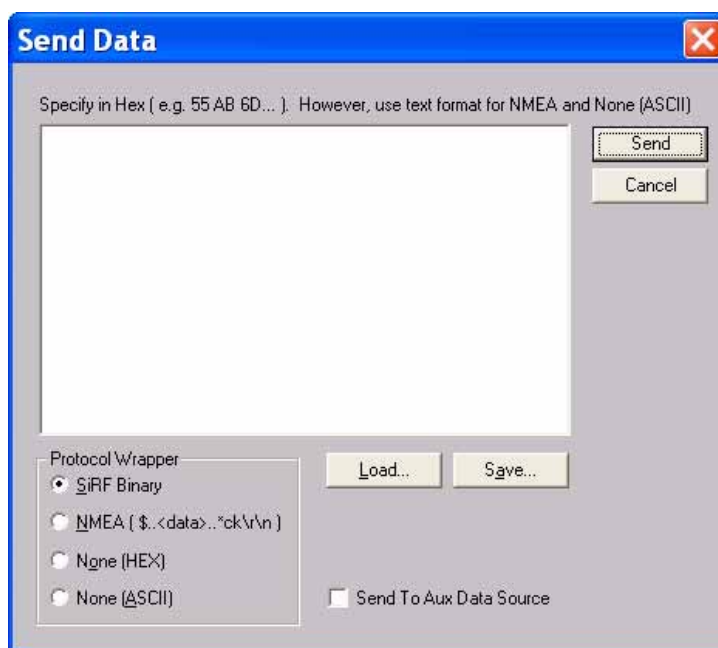
### *Transmitting a User Defined Serial Message*

The Transmit Serial Message function provides the ability for a user to send generic serial messages to the attached target platform. The message can be automatically wrapped with SiRF Binary or NMEA information, or transmitted as is.

To transmit a user defined message to the target platform:

1. Select Transmit Serial Message from the Action menu.

The Send Data screen is displayed.



2. Enter the payload of the message that you want to send to the target platform in the text field.

Use Hex format for a binary message content or ASCII for intended NMEA messages.

---

**Note** – The defined message can be saved in a .cmd file by clicking Save and specifying a file name. A previously defined message that was saved can be loaded by clicking Load and selecting the appropriate file.

---

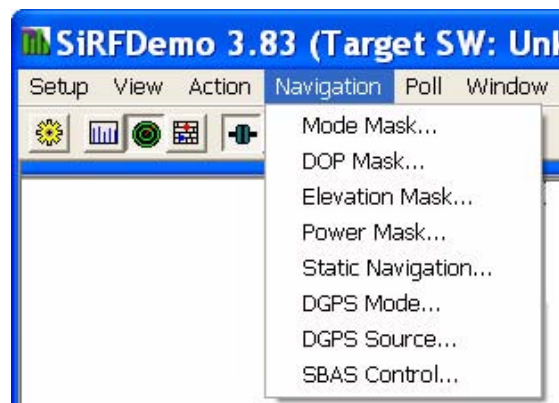
3. Select the desired protocol wrapper from the Protocol Wrapper options.

Option	Description	Default
SiRF Binary	The payload of the message is converted to binary with the appropriate SiRF Binary start sequence, payload length, message checksum, and end sequence is calculated and added to the payload.	On
NMEA (S..<data>.*ck\r\n)	The appropriate NMEA format start sequence, message checksum, and end sequence is calculated and added to the payload.	Off (8)
None (HEX)	Converts Hex to binary with no additional header	Off (8)
None (ASCII)	Sends ASCII data	Off (8)

4. Click Send to send the defined message to the target platform.

## The Navigation Menu

This section describes the SiRFDemo software functions under the Navigation menu:



- “Setting Mode Mask Control” on page 3-51
- “Setting the DOP Mask Control” on page 3-53
- “Selecting an Elevation Mask” on page 3-53
- “Selecting a Power Mask” on page 3-54
- “Enabling/Disabling the Static Navigation” on page 3-55

- “Setting the DGPS Mode” on page 3-55
- “Selecting the DGPS Source” on page 3-56
- “Setting the SBAS Operating Mode” on page 3-57

## Setting Mode Mask Control

Navigation mode control is used to configure the specifics of how a GPS receiver navigates or calculates a position. In particular, selecting how a position should be derived when a minimum number of satellites are not available to calculate a full 3D position.

To set the navigation mode control:

1. Select Mode Mask from the Navigation menu.

The Navigation Moding screen is displayed.



2. Select the required navigation mode options.

Table 3-11 Navigation Mode Options

Option	Description	Default
Enable Track Smoothing	Enables smoothing of the calculated positions based on acceptable variances from the last calculated position. This assists in eliminating any sporadic position jumps possibly caused by multipath, for example.	Off
<b>Altitude Hold Mode</b>		
Automatic	Switch automatically to a 2D solution and hold the altitude fixed when only three satellites are available. A 3D solution is calculated when four or more satellites are available.	On
Always	Stay in 2D mode regardless of the number of satellites available. The altitude always remains fixed.	Off
Disable Altitude Hold	Only calculate 3D solutions. When it is not possible to calculate a 3D solution due to insufficient satellites, no navigation is provided.	Off

Table 3-11 Navigation Mode Options (continued)

Option	Description	Default
Last Computed Altitude	When the GPS receiver is operating in 2D mode, the altitude is held to the last known altitude calculated by the GPS receiver.	Off
Fixed Altitude	When the GPS receiver is operating in 2D mode, the altitude is held to the value entered in the Fixed Altitude field.	Off
<b>Degraded Modes</b>		
Use Direction then Clock Hold	When the number of available satellites is reduced to two, the GPS receiver holds the elevation fixed, and uses the last direction and doppler values (change in distance) to continue positioning. When the available satellites is then reduced to one, the clock bias is then extrapolated.	Off
Use Clock then Direction Hold	This mode is similar to the above Direction then Clock Hold mode. However, the clock bias is extrapolated first, and then the direction and doppler measurements are used.	On
Direction (Curb) Hold Only	This mode restricts positioning to using direction hold only and does not use the extrapolating the clock bias method. Two satellites must be available.	Off
Clock (Time) Hold Only	Positioning is restricted to using the clock bias extrapolation method only and does not hold the direction. Two satellites must be available.	Off
Disable Degraded Mode	When less than three satellites are available, no position is calculated.	Off
Timeout	The GPS receiver only operates in any degraded mode for the period of time specified by the timeout.	30
<b>Dead Reckoning</b>		
Enable Dead Reckoning Mode	When a position solution is not possible due to insufficient satellites, a positions is calculated using the last known velocity. Only applies when the GPS receiver is being used in a dynamic environment.	On
Timeout	The GPS receiver only calculates positions using dead reckoning for the period of time specified by the timeout.	15

3. Click Send to accept or Cancel to exit.

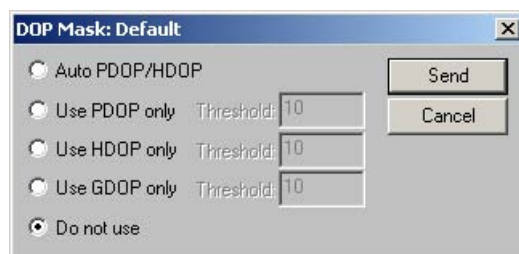
## Setting the DOP Mask Control

This mask enables you to control the position output of a GPS receiver so that positions computed with a high DOP value are not output. When the DOP mask is exceeded, the position message status changes to DOP mask exceeded and the position does not update.

To set the DOP mask controls:

1. Select DOP Mask from the Navigation menu.

The DOP Mask screen is displayed.



2. Select the Mode that you want to use.

Option	Description	Default
Auto PDOP/HDOP	The PDOP mask is used when four or more satellites are available. When only three satellites are available, the HDOP mask is used.	Off
Use PDOP only	Only the PDOP mask is used regardless of the number of satellites available.	Off (8)
Use HDOP only	Only the HDOP mask is used regardless of the number of satellites available.	Off (8)
Use GDOP only	Only the GDOP mask is used regardless of the number of satellites available.	Off (8)
Do not use	No DOP based mask is applied. Any available position is output regardless of any of the DOP values.	On

3. Enter a DOP mask value for the corresponding selected DOP mask.

For each of the DOP masks, the default value is 10. This value is a maximum value and the mask applies when the current set mask is exceeded.

4. Click Send to accept or Cancel to exit.

## Selecting an Elevation Mask

GPS satellites that are low on the horizon are subject to noise due to the amount of atmosphere that the signal must travel through. Better position accuracy is often achieved when lower elevation satellites are not used in the position solution. The elevation mask is used to exclude the use of satellites in the position solution that are below a defined elevation mask.

To select an elevation mask:

1. Select Elevation Mask from the Navigation menu.

The Elevation Mask screen is displayed.



2. Enter the minimum elevation angle for satellites to be used in any position solution.
3. Click Send to accept or Cancel to exit.

### *Selecting a Power Mask*

GPS satellites that have a low signal strength are not easily tracked by a GPS receiver and may result in using signals that are either noisy or have been effected by multipath or other interference source. To increase accuracy, it may be necessary to exclude GPS satellites with a signal strength below a selected value.

---

**Note** – Not valid when operating in SiRFDRive mode.

---

To exclude satellites from the position solution with a signal strength below a selected value:

1. Select Power Mask from the Navigation menu.

The Power Mask screen is displayed.



2. Enter the minimum satellite signal level for satellites to be used in any position solution.
3. Click Send to accept or Cancel to exit.

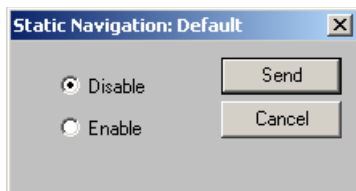
## Enabling/Disabling the Static Navigation

The steady state detection allows the navigating algorithms to decrease the noise in the position output when the acceleration is below the threshold. This reduces the position wander caused by Selective Availability (SA) and improves position accuracy especially in stationary applications.

To select the static navigation mode:

1. Select Static Navigation from the Navigation menu.

The Static Navigation screen is displayed.



2. Select the option that you want to use.

Option	Description	Default
Disable	Displays true user movement due to SA (and other environmental issues such as multipath).	Yes
Enable	Holds the current position as fixed when the user is in a stationary mode. Updates to the fixed position due to SA are made based on internal navigation data.	No

3. Click Send to accept or Cancel to exit.

**Note** – The Static Navigation filter is Disabled when DGPS corrections are used in the navigation solution.

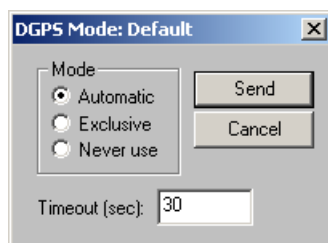
## Setting the DGPS Mode

The DGPS mode is used to control the position output of a GPS receiver based on whether positions are differentially corrected.

To set the DGPS mode:

1. Select DGPS Mode from the Navigation menu.

The DGPS Mode screen is displayed.



2. Select the Mode that you want to use.

Option	Description	Default
Automatic	Use differential corrections when they are available, otherwise compute a non-differential solution. (See the Note that follows.)	On
Exclusive	Only compute a differential solution. When no corrections are available, no solution is output.	Off
Never use	Only compute a non-differential solution (even when corrections are valid).	Off

3. Enter the timeout value (in seconds) you want to use in the Timeout field.

A received differential correction is applied to the solution until either the timeout value is exceeded, or a new differential correction is received.

4. Click **Send** to accept or **Cancel** to exit.

**Note** – For a differential position to be calculated, there must be pseudorange corrections for every pseudorange used in the solution. When pseudoranges are without corrections and the GDOP improves by two by using all pseudoranges, the solution does not use available corrections.

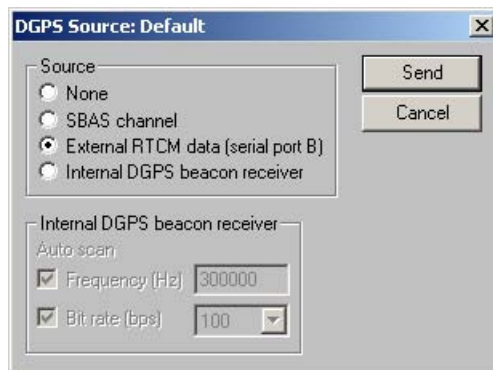
### Selecting the DGPS Source

Many SiRF products have the ability to receive RTCM differential corrections from different sources. The DGPS source control is used to select which source is used to obtain RTCM differential corrections.

To select the DGPS source:

1. Select DGPS Source from the Navigation menu.

The DGPS Source screen is displayed.





2. Select the Source that you want to use.

Option	Description	Default
None	The GPS receiver does not use any of the available DGPS sources.	No
SBAS Channel	The GPS receiver uses the SBAS correction service when available. One of the twelve channels is dedicated to the SBAS signal.	No
External RTCM Data	The GPS receiver uses any RTCM corrections that are input directly through one of the serial ports.	Yes
Internal DGPS Beacon Receiver	The internal beacon receiver is used to provide RTCM corrections received from an operating radio-beacon. A beacon antenna is required.	No

3. When the Internal DGPS Beacon Receiver is the chosen DGPS source, select the auto scan options.

Auto Search	Description
Frequency	The internal beacon receiver automatically scans the radio-beacon frequency range until a usable signal is acquired. When this option is deselected, you must enter a signal frequency for the beacon receiver to use.
Bit Rate	Radio-beacons can broadcast the correction information using different bit rates (the number of bits of data per second). When this option is selected, the internal beacon receiver also searches the different available bit rates until a usable signal is acquired. When this option is deselected, you must select a signal bit rate for the beacon receiver to use.

4. Click Send to accept the settings.

**Note** – The selection made in the DGPS Source screen is displayed in the DGPS Status View screen by selecting Messages | DGPS Status from the View menu.

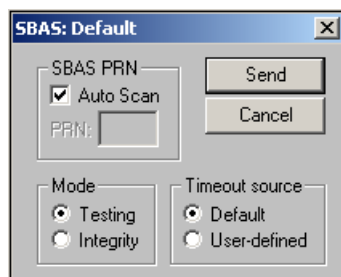
## Setting the SBAS Operating Mode

SBAS support can be configured using the SBAS configuration dialog.

To select the SBAS operation:

1. Select SBAS Control from the Navigation menu.

The SBAS screen is displayed.



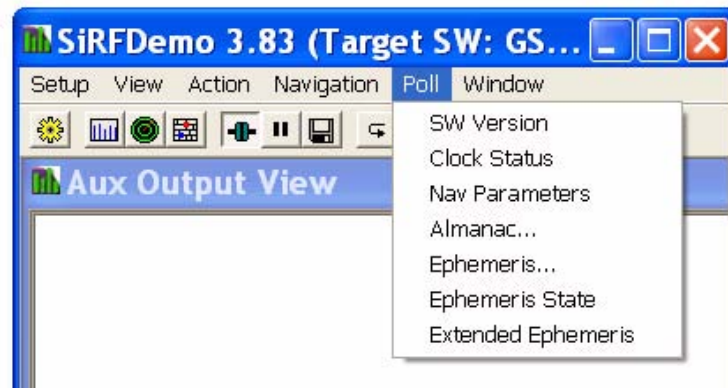
2. Select the required operating parameters.

Option	Description	Default
SBAS PRN	When set to Auto Scan, the GPS receiver automatically searches for and use any available SBAS correction source. Otherwise, it only uses corrections from the SBAS source identified by the PRN entered in the PRN field.	Auto Scan
Mode	Used to indicate the current operating mode of the SBAS system being used. The operating mode is displayed in the DGPS View screen. See “The DGPS View Screen” on page 3-15.	Testing
Timeout Source	When set to default, the timeout as provided by the SBAS system is used (this is typically 18 seconds). When User Defined is selected, the timeout value as set by the DGPS Mode dialog is used. See “Setting the DGPS Mode” on page 3-55.	Default

3. Click Send to accept the settings.

### The Poll Menu

This section describes the SiRFDemo software functions under the Poll menu:



- “Polling the Clock Status” on page 3-59
- “Polling the Navigation Parameters” on page 3-60
- “Downloading an Almanac File” on page 3-61
- “Downloading an Ephemeris File” on page 3-61
- “Polling the Ephemeris State” on page 3-62
- “Polling the Extended Ephemeris” on page 3-62

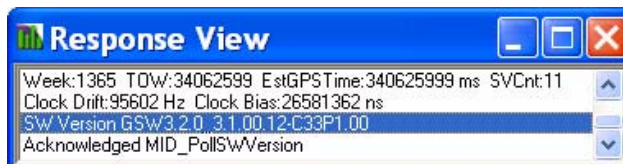
## Viewing the Software Version

The poll software version function allows you to query a GPS receiver for the version of embedded software currently being run.

To view the current software version:

1. Select SW Version from the Poll menu.

The Response View screen is displayed showing the software version currently being run.



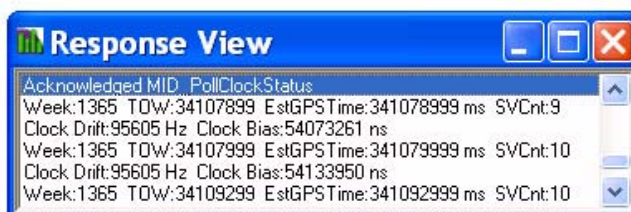
## Polling the Clock Status

The poll clock status function allows you to query a GPS receiver for clock performance information including the GPS week number, GPS time, clock drift, and clock bias.

To poll a GPS receiver for clock status information:

1. Select Clock Status from the Poll menu.

The Response View screen is displayed with the clock status.



The following table provides a description of the clock status items.

Item	Description
Week	Number of continuous weeks that GPS has been operational. The start date being January 6, 1980.
TOW	Time of Week—the number of GPS seconds since the start of the current GPS week. The start of the GPS week being 0 hrs Sunday UTC.
EstGPS Time	Estimated TOW while the GPS receiver is not tracking GPS satellites.
SVCnt	Number of satellites currently being tracked and used in the position solution.
Clock Drift	Change in the clock bias. A typical range is between 76kHz and 116kHz.
Clock Bias	Offset of the GPS receiver clock compared with the current GPS time.

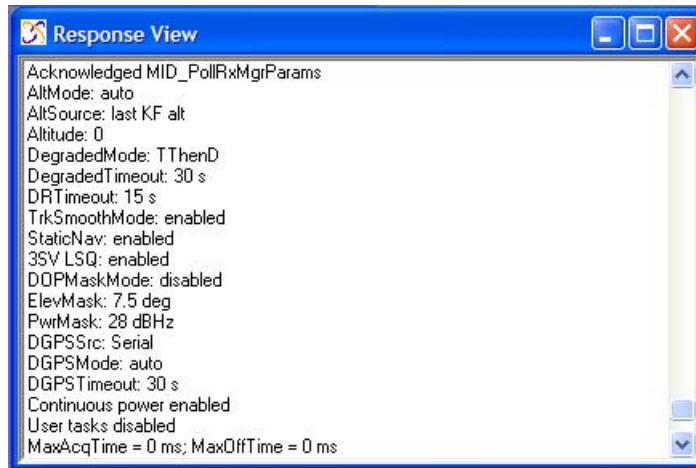
## Polling the Navigation Parameters

All of the user settings that have been set under the Action and Navigation menus can be polled for their current status and settings.

To poll a GPS receiver for its current navigation parameters:

1. Select Navigation Parameters from the Poll menu.

The current settings are displayed in the Response View window.



A description of each of the navigation parameters are given in the following table.

Table 3-12 Navigation Parameters

Parameter	Description
AltMode	Selected altitude hold mode.
AltSource	Altitude type used when a 2D solution is being calculated.
Altitude	Altitude used when fixed manually.
DegradeMode	Type of degraded mode selected.
DegradedTimeout	Timeout value applied to degraded mode operation.
DR Timeout	Timeout value applied to dead reckoning navigation.
TrkSmoothMode	Enable or disable state of track smoothing.
StaticNav	Enable or disable state of the static navigation mode.
3SV LSQ	Indicates the state of a start-up mode that allowS start-up when only three satellites are available.
DOPMaskMode	Selected DOP mask control.
ElevMask	Currently used elevation mask.
PwrMask	Currently used power mask.
DGPSSrc	Selected DGPS source.
DGPSMode	Selected DGPS mode.

Table 3-12 Navigation Parameters (continued)

Parameter	Description
DGPSTimeout	Timeout value applied to DGPS corrections.
Power Mode	indicates the current power mode of the GPS receiver, which is either TricklePower or continuous power.
User Task	User status: enabled or disabled (default)
MaxAcqTime	Maximum Acquisition Time.
MaxOffTime	Maximum Off Time.

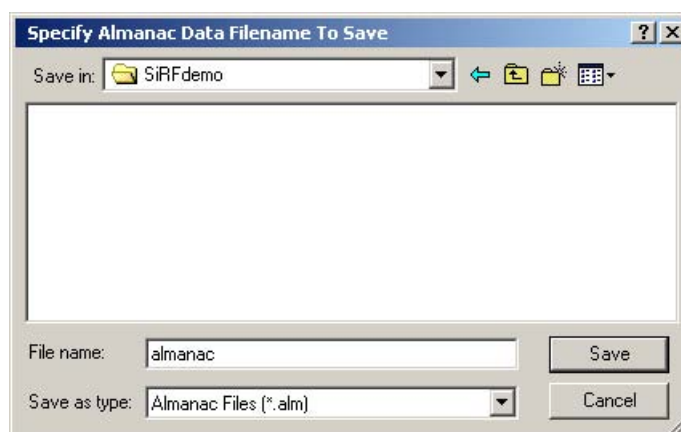
### Downloading an Almanac File

You can download an almanac file from a SiRF GPS receiver and load it back into the receiver at a later date or to another GPS receiver. This is to assist with initial satellite tracking. This file may also be used for mission planning and constellation investigations.

To download an almanac file:

1. Select Almanac from the Poll menu.

The Specify Almanac Data Filename To Save screen is displayed.



2. Specify the file name in which to save the almanac information.
3. Click Save to save the data to file.

A message box is displayed to confirm completion.

To load an almanac file, see “Uploading an Almanac to a GPS Receiver” on page 3-41.

### Downloading an Ephemeris File

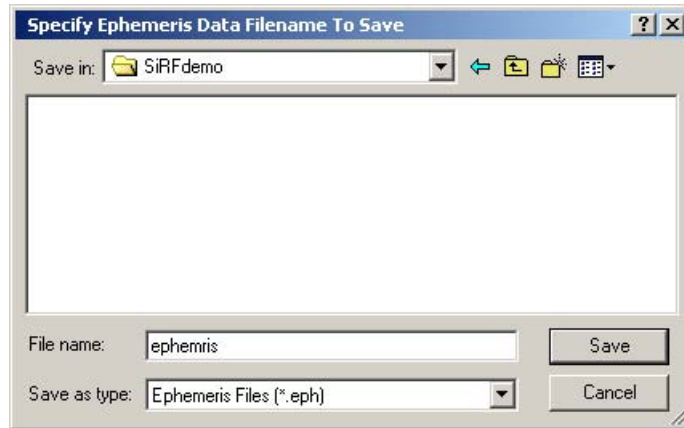
You can download an ephemeris file from a SiRF GPS receiver and load it back into the receiver at a later date or to another GPS receiver. This is to assist with initial position calculations. This file may also be used for mission planning and constellation investigations.

The downloaded ephemeris, which contains information on the status of each satellite, could have been acquired from a broadcast ephemeris, an extended ephemeris, or a combination of both, depending on what SiRF GPS product was being used.

To download an ephemeris file:

1. Select Ephemeris from the Poll menu.

The Specify Ephemeris Data Filename To Save screen is displayed.



2. Specify the file name that you want to save the ephemeris information to.
3. Click Save to save the data to file.

A message box is displayed to confirm completion.

To load an ephemeris file, see “Uploading an Ephemeris to a GPS Receiver” on page 3-41.

### *Polling the Ephemeris State*

Polling the ephemeris state sends msg 56, subID 3, and the response can be viewed by selecting Messages | Response in the View menu.

The ephemeris state can also be polled by selecting Messages | Ephemeris Info from the View menu, which is graphically displays the message response. See “Ephemeris Information” on page 3-24.

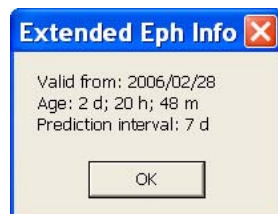
### *Polling the Extended Ephemeris*

The Ext Eph Info menu item polls the currently loaded SiRF extended ephemeris for information about its download date, age, and valid time remaining.

To poll the currently loaded ephemeris file:

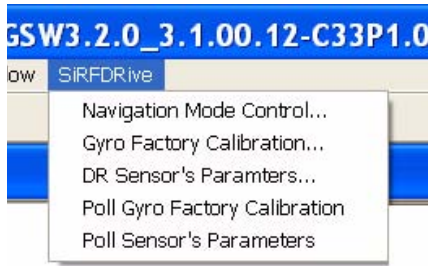
1. Select Extended Ephemeris from the Poll menu.

The Extended Ephemeris Information screen is displayed.



## The SiRFDRive Menu

This section describes the SiRFDemo software functions under the SiRFDRive menu:



- “Setting Navigation Mode Control” on page 3-63
- “Calibrating the Gyro” on page 3-64
- “Setting DR Sensor Parameters” on page 3-64
- “Polling Gyro Factory Calibration” on page 3-65
- “Polling DR Sensor’s Parameters” on page 3-65

---

**Note** – The SiRFDRive menu is only available when DiRFDRive and SiRFNav & SiRFDRive is selected as the target software.

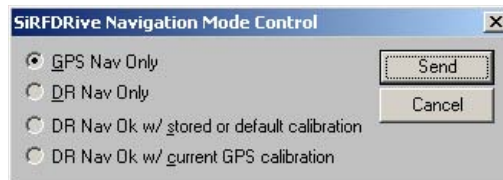
---

### Setting Navigation Mode Control

To set the SiRFDRive navigation mode control:

1. Select SiRFDRive | Navigation Mode Control from the Navigation menu.

The SiRFDRive Navigation Mode Control screen is displayed.



2. Select the radio button for a SiRFDRive Navigation Mode.

Navigation Mode	Description
GPS Nav Only	User can configure the device to use GPS navigation only (DR sensors are not used for navigation).
DR Nav Only	Dead reckoning navigation is used exclusively, GPS updates are received but not used for navigation.
DR Nav Ok w/ stored or default calibration	DR navigation can be specified at startup by using DR sensor calibration stored in RAM (i.e., OK to do DR only at startup when no update from GPS is available). This is the default navigation mode at startup.
DR Nav OK w/ current GPS calibration	DR Navigation must use current GPS-based calibration (i.e., no DR Navigation after startup until after calibration by GPS).



3. Click Send to accept the setting.

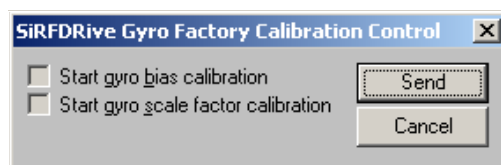
## *Calibrating the Gyro*

The factory calibration procedure requires that the “Start Gyro Bias Calibration” be done first while the gyro is stationary, and then the “Gyro Scale Factor Calibration” be done while the gyro rotates smoothly through 360 degrees.

To start the gyro calibration:

1. Select SiRFDrive | Poll Gyro Factory Calibration from the Navigation menu.
2. Select SiRFDrive | Gyro Factory Calibration from the Navigation menu.

The SiRFDrive Gyro Factory Calibration Control screen is displayed.



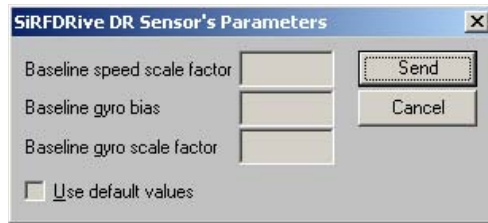
3. Check the Start gyro bias calibration checkbox.
4. Click Send.
5. Wait for the “Gyro Bias Calibration Finished” message in the Response View.
6. Select SiRFDrive | Gyro Factory Calibration from the Navigation menu.
7. Check the Start gyro scale factor calibration checkbox.
8. Click Send.
9. Rotate Gyro through exactly 360 degrees using highest possible angular rate, or at least 40 deg/sec.
10. Wait for the “Gyro Scale Factor Calibration Finished” message in the Response View.

## *Setting DR Sensor Parameters*

To enter the following DR sensor parameters:

- Speed scale factor (meters per wheel tick)
  - Gyro Bias (zero rate volt)
  - Gyro Scale Factor mV / (deg/sec)
1. Select SiRFDrive | DR Sensor's Parameters from the Navigation menu.

The SiRFDRive DR Sensor's Parameters screen is displayed.



2. Enter the new parameters or check the Use default values checkbox.
3. Click Send to accept the setting.

### *Polling Gyro Factory Calibration*

This command provides status information during the Gyro Factory Calibration process. Refer to “Calibrating the Gyro” on page 3-64 for usage.

### *Polling DR Sensor's Parameters*

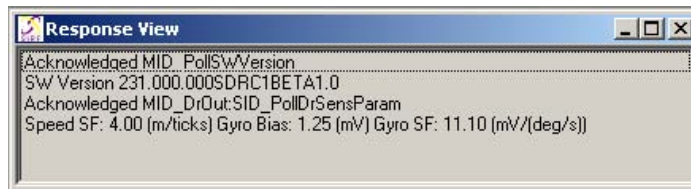
This command reads the current DR sensor values:

- Speed Scale Factor - meters / wheel tick
- Gyro Bias - zero rate volt
- Gyro Scale Factor - mV / (deg/sec)

To read the current DR sensor parameter values:

1. Select SiRFDRive | DR Sensor's Parameters from the Navigation menu.

The Response View screen is displayed.



## SiRFDemo Real Time View Windows



SiRFDemo provides view windows for real time monitoring of SiRF GPS receivers. Each view windows displays information based on one or more SiRF Binary receiver output message(s) as described in the following table.

Table A-1 SiRFDemo View Window

Window Name	Messages	Comments
Signal View	2, 4, 30	Message 4 describes everything except the blue/green color distinction, which is based on SVs used in the navigation solution from message 2, and green/magenta color distinction based on the extended ephemeris flags from message 30. Message 30 pertains to all software except SiRFXTrac and SiRFLoc Client.
Radar View	2, 4, 30	Message 4 describes everything except the blue/green color distinction, which is based on SVs used in the navigation solution from message 2, and green/magenta color distinction based on the extended ephemeris flags from message 30. Message 30 pertains to all software except SiRFXTrac.
Map View	2, 41	Message 2 describes everything except message 41, which is used for the heading field when SiRFDemo is configured for SiRFDRIve.
Navigation View	2, 41	Message 2 describes everything except message 41, which is used for the heading field when SiRFDemo is configured for SiRFDRIve.
Debug View	255 and All NMEA Messages	Displays the text from SiRF Binary debug messages (MID 255) and displays NMEA text messages when available.
Response View	6, 7, 11, 12, 19, 45, 48	MID_SWVersion(6), MID_ClockStatus(7), MID_Ack(11), MID_Nak(12), MID_RxMgrParams(19) with subid 0 for regular nav, subid 1 for APM nav, MID_TrkADCODOGPIO(45), MID_DrOut(48) with subids 5 for DrValid, 6 for GyrFactCal, and 7 for DRSENSParam. Messages 45 and 48 pertain only to SiRFDRIve.
Error View	10, 255	SiRF Binary message 10 error codes are converted to human readable strings, message 255 strings flagged as errors are displayed in this window instead of the debug view window. Message 255 for the Aux Output View pertains only to SiRFDRIve.
Output View	All Messages 0-255	This view displays each message ID received in both decimal and hex, along with the SiRF Binary message name for that message ID. Message 255 pertains only to SiRFDRIve
DGPS View	27, 50	MID_DGPSStatus(27), MID_SbasStatus(50). Message 27 pertains to all software except SiRFXTra. Messages 50 pertain only to GSW2.

Table A-1 SiRFDemo View Window (Continued)

Window Name	Messages	Comments
Geodetic Nav View	41	Some additional fields are displayed for SiRFDrive (Reverse Flag) or Fusion (Map Matching) GPS receiver software under test.
PPS Timing View	52	MID_PPS_Time(52). Message 52 pertains only to GSW2.
Aux Output View	172, 255	MID_DrIn(172), MID_ASCIIData(255); this is not only message 255, but can be any text data received on the aux data source channel. This window is specifically designed for SiRFDrive 2 development. Messages 172 and 255 pertain only to SiRFDrive.
Ephemeris Info View	30, 56	Messages used are clearly indicated in the display window; for message 56 several subids are handled – 255 sub id 1 and sub id 3. This window is designed specifically for GSW 3.2 development and for future extended ephemeris products. Message 30 pertains to all software except SiRFXTrac. Message 56 pertains only to GSW3.

## File Formats



This appendix describes the format of files that are either used by the SiRFDemo software or are created by the SiRFsig software. It includes information on the following:

- “Modifying the Sample sirf.pos File”
- “Description of SiRFsig File Formats”

### *Modifying the Sample sirf.pos File*

The sirf.pos file can be used by the Receiver Initialization dialog to load predefined coordinates.

To modify the sirf.pos file:

1. Open the sample sirf.pos file using a text editor.  
The sample X, Y, Z positions are displayed.

```
-2686718  
-4304272  
3851636  
0
```

2. Use the configuration values displayed on the Measured Navigation Message View screen as your new X, Y, and Z coordinates after communication is established with the GPS receiver.

	X	Y	Z
Position (m):	-2686841	-4304311	3851688
Velocity (m/s):	0.250	-0.375	-0.125
Lat: 37.38735	Lon: -121.97327	Alt: 83	
Mode: Full 3D		GPS Week: 957	
DOP: 4.4	Fix: Validated	Time: 346168.00	
5 SVs Used in Fix:	21 23 3 17 22		

3. Modify the X, Y, Z positions in the `sirf.pos` file with the new configuration values displayed on the Measured Navigation Message View screen.

```
-2690721
-4310924
3841682
0
```

## *Description of SiRFsig File Formats*

The SiRFsig software produces the following files for plotting and statistics:

- \*.avg
- \*.pos
- \*.vel
- \*.###
- \*.svs

Following are descriptions of each type of file.

### *\*.avg File*

\*.avg is the average data file used to calculate statistics. It is created during parsing and used if data is reviewed without re-parsing the data file.

### *Format*

Lines 0-32 are satellite data. All fields are 0 if Sv is not tracked.

<b>Sv</b>	<b>Avg C/No</b>	<b>Number of Seconds Tracked</b>
0	0.00	0
0	0.00	0
2	47.00	3631
0	0.00	0
0	0.00	0
0	0.00	0
0	0.00	0
7	45.44	3630
..	....	...
..	....	...
31	38.02	3467
0	0.00	0

### Bin Data for Polar Plots

Bins are in a matrix of [8][8] with each bin defined by an azimuth range and elevation range. Bin[0][0] is Az 0-45 and El. 0-10 degrees, Bin[0][1] is Az 0-45, El 10-20 degrees. Bin azimuths are in steps of 45 degrees in a clockwise direction, elevation bins are in 10 degree steps starting at the horizon (0 degrees) and finishing at the zenith (90 degrees).

Bin	Bin	Avg. C/No	# of Data	Max C/No	Min C/No
0	0	34.04	444	37.00	29.00
0	1	38.58	1638	43.00	33.00
..	..	..	..	..	..
0	8	0.00	0	-1.00	99.00
..	.	..	..	..	..
..	..	..	..	..	..
7	0	34.12	429	37.00	28.00
7	1	40.59	1638	46.00	35.00
..	..	..	..	..	..
7	8	0.00	0	-1.00	99.00

This is the start and end time of the data session in GPS seconds into the week.

Start	End
259510.24	263143.18

This is the average position of the board/receiver in ECEF XYZ coordinates.

Px	Py	Pz
-2686753.9	-4304226.9	3851670.2

This is the average velocity of the board/receiver in ECEF XYZ coordinates.

Vx	Vy	Vz
-2686753.9	-4304226.9	3851670.2

This is the board/receiver software version.

Version 200R00234

This is the data protocol of the board/receiver.

20<sup>1</sup> (protocol)

1. 20 equals SiRF Binary data, 21 equals NMEA data

This is the Power settings of the board/receiver.

Power Mode 10 1000.0 1.0 (mode<sup>1</sup>, Ontime<sup>2</sup> (ms) Update Rate<sup>3</sup> (ms)

1. 10 equals Full Power, 11 equals Trickle Power, 12 equals Push-to-fix

2. User selected On Time in ms

3. User selected Update Rate in ms

This is the Elevation Mask in degrees.

Elevation Mask 7.5

This is the DGPS mode of operation.

DGPSmode 10 (10 = Auto, 11 = Exclusive, 12 = Never Use)

This is the Number of False Acquisitions Detected.

False Acquisitions 0
----------------------

### \*.pos File

\*.pos is the time tagged position file in ECEF XYZ parsed from record 002 (measured navigation data) of SiRFdemo.

GPS Time	Px	Py	Pz	DOP	Mode1	Mode2	SVs used	Thru put	SV tracked

### \*.vel File

\*.vel is the time tagged position file in ECEF Vx, Vy, Vz parsed from record 002 (measured navigation data) of SiRFdemo.

GPS Time	Vx	Vy	Vz	DOP	Mode1	Mode2	SVs used	Thru put	SV tracked

### \*.### File

\*.### is the satellite specific data for each Sv tracked where ### is the Sv prn number. This data is parsed from record 004 (measured tracker data) from SiRFdemo (i.e., Satellite data for Sv Number 22 will be in file \*.022).

GPS Time	Az	El.	Avg. C/No
256707.11	297	35	44
256708.11	297	35	45
256709.11	297	35	45

### \*.svs File

\*.svs contains statistics that are generated each time the program processes a data file on a per satellite basis.

#### Statistical data file: \*.svs

Statistical data per Sv based on file.

Sv	Mean	Std Dev	Max	Min	Range	Data
2	47.0	0.1	47	46	1	7262
7	45.4	1.2	47	42	5	7260
10	8.3	2.6	45	28	17	5884
13	47.0	0.0	47	47	0	72
15	35.8	3.0	42	28	14	3262
18	38.6	4.0	45	28	17	3290
19	46.6	0.5	48	45	3	7262
26	41.5	4.1	47	28	19	6852
27	47.0	0.1	47	46	1	7262
31	38.0	2.8	43	28	15	6934



# *Acronyms and Abbreviations*

## *Glossary*

---



2-D	Two dimensional
3-D	Three dimensional
A/D	Analog to Digital
AGC	Automatic Gain Control
Almanac	A set of orbital parameters that allows calculation of the approximate GPS satellite positions and velocities. A GPS receiver uses the almanac as an aid to determine satellite visibility during acquisition of GPS satellite signals. The almanac is a subset of satellite ephemeris data and is updated weekly by GPS Control.
Altitude	The distance between the current position and the nearest point on WGS84 reference ellipsoid. Altitude is usually expressed in meters and is positive outside the ellipsoid. In SiRFstar devices, this has no bearing on the height above mean sea level.
Altitude Hold	A technique that allows navigation using measurements from three GPS satellites plus an independently obtained value of altitude.
Altitude Hold Mode	A navigation mode during which a value of altitude is processed by the Kalman Filter as if it were a range measurement from a satellite at the Earth's center (WGS-84 reference ellipsoid center).
BA	Bus Address
BGA	Ball Grid Array
Baud	(See bps.)
BOM	Bill Of Materials
bps	Bits per second
C	Celsius, a unit of temperature
C/A Code	Coarse/Acquisition Code. A spread spectrum direct sequence code that is used primarily by commercial GPS receivers to determine the range to the transmitting GPS satellite.
CEP	Circular Error Probable. The radius of a circle, centered at the user's true location, that contains 50 percent of the individual position measurements made using a particular navigation system.
Clock Error	The uncompensated difference between synchronous GPS system time and time best known within the GPS receiver.
CMOS	Complimentary Metal Oxide Semiconductor
C/N <sub>0</sub>	Carrier-to-Noise density ratio.

---

Cold Start	A condition in which the GPS receiver can arrive at a navigation solution without initial position, time, and current Ephemeris.
Control Segment	The Master Control Station and the globally dispersed Monitor Stations used to manage the GPS satellites, determine their precise orbital parameters, and synchronize their clocks.
dB	Decibel
dB <i>i</i> C	Decibel-Isometric-Circular (measure of power relative to an isometric antenna with circular polarization).
dBm	Decibels relative to 1mW
dBW	Decibel-Watt (measure of power relative to one watt)
DC	Direct Current
DGPS	Differential GPS. A technique to improve GPS accuracy that uses pseudorange errors recorded at known locations to improve the measurements made by other GPS receivers.
Doppler Aiding	A signal processing strategy that uses a measured Doppler shift to help a receiver smoothly track a GPS signal to allow a more precise velocity and position measurement.
DoD	The U.S. Government Department of Defense
DOP	Dilution of Precision (see GDOP, HDOP, PDOP, TDOP, and VDOP).
DSP	Digital Signal Processor
DTR	Data Terminal Ready. A hardware handshake signal used in serial data links.
ECEF	Earth-Centered Earth-Fixed. A Cartesian coordinate system with its origin located at the center of the Earth and whose axes rotate with the Earth. The coordinate system used by GPS to describe 3-D location. For the WGS-84 reference ellipsoid, ECEF coordinates have the Z-axis aligned with the Earth's spin axis, the X-axis through the intersection of the Prime Meridian and the equator, and the Y-axis is rotated 90 degrees East of the X-axis.
EA	External Address
EEPROM	Electrically Erasable Programmable Read Only Memory
EHPE	Estimated Horizontal Position Error
EMC	Electromagnetic Compatibility
EMI	Electromagnetic Interference
EPE	Estimated Position Error
Ephemeris	A set of satellite orbital parameters used by a GPS receiver to calculate precise GPS satellite positions and velocities. The ephemeris is used to determine the navigation solution and is updated frequently to maintain the accuracy of GPS receivers.
EPROM	Erasable Programmable Read Only Memory
ESD	Electrostatic Discharge
EVPE	Estimated Vertical Position Error
FP	Floating-Point mathematics, as opposed to fixed point (integer).
FRP	Federal Radionavigation Plan. The U.S. Government document that contains the official policy on the commercial use of GPS.
FSM	Finite State Machine
GaAs	Gallium Arsenide, a semiconductor material.

GDOP	Geometric Dilution of Precision. A factor used to describe the effect of the satellite geometry on the position and time accuracy of the GPS receiver solution. The lower the value of the GDOP parameter, the less the errors in the position solution. Related indicators include PDOP, HDOP, TDOP, and VDOP.
GMT	Greenwich Mean Time
GPS	Global Positioning System. A space-based radio positioning system that provides suitably equipped users with accurate position, velocity, and time data. GPS provides this data free of direct user charge worldwide, continuously, and under all weather conditions. The GPS constellation consists of 21 orbiting satellites, plus three to nine on-orbit spares equally spaced around each of six different orbital planes. The system is developed by the DoD under Air Force management.
GPS Time	The number of seconds since Saturday/Sunday Midnight, with time zero being this midnight. Used with GPS Week Number to determine a specific point in GPS time.
GUI	Graphic User Interface
HDOP	Horizontal Dilution of Precision. A measure of how much the geometry of the satellites affect the position estimate (computed from the satellite range measurements) in the horizontal (East, North) plane.
Held Altitude	The altitude value that is sent to the Kalman filter as a measurement when in Altitude Hold Mode.
Hot Start	Start mode of the GPS receiver when current position, clock offset, approximate GPS time, and current ephemeris data are all available.
Hz	Hertz, a unit of frequency equal to one cycle per second.
I/O	Input/Output
IF	Intermediate Frequency
IRQ	Interrupt ReQuest line
ISR	Interrupt Service Routine
IGRF	International Geomagnetic Reference Field
IODC	Issue Of Data Clock
IODE	Issue Of Data Ephemeris
JPO	Joint Program Office. An office within the U.S. Air Force Systems Command, Space Systems Division. The JPO is responsible of managing the development and production aspect of the GPS system and is staffed by representatives from each branch of the U.S. military, the U.S. Department of Transportation, U.S. Defense Mapping Agency, NATO member nations, and Australia.
Kalman Filter	Sequential estimation filter that combines measurements of satellite range and range rate to determine the position, velocity, and time at the GPS receiver antenna.
km	Kilometer (1km = 1000 meters).
L1	The 1575.42MHz GPS carrier frequency that contains the C/A code, P-code, and navigation messages used by commercial GPS receivers.
L2	A secondary GPS carrier, containing only P-code, used primarily to calculate signal delays caused by the atmosphere. The L2 frequency is 1227.60MHz.

---

Latitude	Halfway between the poles lies the equator. Latitude is the angular measurement of a place expressed in degrees north or south of the equator. Latitude runs from 0° at the equator to 90°N or 90°S at the poles. When not qualified with letters N or S, it is assumed positive is north of the equator and negative is south of the equator. Lines of latitude run in an east-west direction. They are called parallels.
LLA	Latitude, Longitude, Altitude. Geographical coordinate system used for locating places on the surface of the Earth. Latitude and longitude are angular measurements, expressed as degrees of a circle measured from the center of the Earth. The Earth spins on its axis, which intersects the surface at the north and south poles. The poles are the natural starting place for the graticule, a spherical grid of latitude and longitude lines. See also Altitude.
LNA	Low Noise Amplifier
Longitude	Lines of longitude, called meridians, run in a north-south direction from pole to pole. Longitude is the angular measurement of a place east or west of the prime meridian. This meridian is also known as the Greenwich Meridian, because it runs through the original site of the Royal Observatory, which was located at Greenwich, just outside London, England. Longitude runs from 0° at the prime meridian to 180° east or west, halfway around the globe. When not qualified with letters E or W, it is assumed positive is east of Greenwich and negative is west of Greenwich. The International Date Line follows the 180° meridian, making a few jogs to avoid cutting through land areas.
LPTS	Low Power Time Source
LSB	Least Significant Bit or Bytes of a binary word
LTP	Local Tangent Plane coordinate system. The coordinates are supplied in a North, East, Down sense. The North and East are in degrees or radians, and Down is height below WGS-84 ellipsoid in meters.
m/s	Meters per second (unit of velocity)
m/s/s or m/s <sup>2</sup>	Meters per second per second (unit of acceleration)
m/s/s/s or m/s <sup>3</sup>	Meters per second per second per second (unit of impulse or “jerk”)
Mask Angle	The minimum GPS satellite elevation angle at which a satellite is used in a navigation solution.
MID	Message Identifier. In case of SiRF protocol, it is a number between 1 and 256.
MIPS	Million Instructions Per Second
MHz	Megahertz, a unit of frequency equal to one million Hz
MSB	Most Significant Bit or Byte within a binary word or a byte
MSL	Mean Sea Level
MTBF	Mean Time Between Failure
MUL	Memory Upper Lower
Multipath Error	GPS positioning errors caused by the interaction of the GPS satellite signal and its reflections.
mV	Millivolt
mW	Milliwatt
NED	North, East, Down coordinate system. See LTP.
NF	Noise Factor
NMEA	National Marine Electronic Association. Also commonly used to refer to Standard for Interfacing Marine Electronic Devices.

NVRAM	Non-volatile RAM Memory that is powered by a backup battery power supply when prime power is removed. It is used to preserve important data and allow faster entry to the Navigation Mode when prime power is restored. All the SRAM is copied to memory that is preserved by the backup battery power supply (sometimes also referred to as “keep-alive” SRAM).
Obscuration	Term used to describe periods of time during which a GPS receiver’s line-of-sight to GPS satellites is blocked by natural or man-made objects.
OEM	Original Equipment Manufacturer
Overdetermined Solution	The solution of a system of equations containing more equations than unknowns. The GPS receiver computes, when possible, an overdetermined solution using the measurements from five GPS satellites, instead of the four necessary for a three-dimensional position solution.
P-Code	Precision Code. A spread spectrum direct sequence code that is used primarily by military GPS receivers to determine the range to the transmitting GPS satellite.
Parallel Receiver	A GPS receiver that monitors four or more satellites simultaneously. SiRF receivers can simultaneously monitor 12 or more satellites due to the capabilities of the SiRF chipset it uses.
PDOP	Position Dilution of Precision. A measure of how much the error in the three-dimensional position estimate produced from satellite range measurements is amplified by a poor satellite geometry with respect to the receiver antenna.
Pi	The mathematical constant having a value of approximately 3.14159
P-P	Peak to Peak
PPS	Precise Positioning Service. The GPS positioning, velocity, and time service that are available on a continuous, worldwide basis to users authorized by the DoD.
PRN	Pseudorandom Number. The identity of the GPS satellites as determined by a GPS receiver. Because all GPS satellites must transmit on the same frequency, they are distinguished by their pseudorandom number codes.
Pseudorange	The calculated range from the GPS receiver to the satellite, which is determined by measuring the phase shift of the PRN code received from the satellite with internally generated PRN code from the receiver. Because of atmospheric and timing effects, this time is not exact. Therefore, it is called a pseudorange instead of a true range.
PVT	Position, Velocity, and Time
RAM	Random Access Memory
Receiver Channels	A GPS receiver specification that indicates the number of independent hardware signal processing channels or unique tracking resources included in the receiver design.
RF	Radio Frequency
RFI	Radio Frequency Interference
ROM	Read Only Memory
RTC	real-time Clock
RTCA	Radio Technical Commission of Aeronautics
RTCM	Radio Technical Commission for Maritime Services. Also commonly used as a reference to the standard format that DGPS corrections data is distributed in <i>RTCM Recommended Standard for Differential Navstar GPS Service</i> .
SA	Selective Availability. The method used by the DoD to control access to the full accuracy achievable with the C/A code. (This method is no longer used.)
Satellite Elevation	The angle of the satellite above the horizon

---

SEP	Spherical Error Probable. The radius of a sphere, centered at the user's true location, that contain 50 percent of the individual 3-D position measurements made using a particular navigation system.
Sequential Receiver	A GPS receiver in which the number of satellite signals to be tracked exceeds the number of available hardware channels. Sequential receivers periodically reassign hardware channels to particular satellite signals in a predetermined sequence.
SNR	Signal-to-Noise Ratio, often expressed in decibels.
SPI	Serial Peripheral Interface
SPS	Standard Positioning Service. A position service available to all GPS users on a continuous, worldwide basis with no direct charge. SPS uses the C/A code to provide a minimum dynamic and static positioning capability.
SRAM	Static Random Access Memory. In context of this document, see also NVRAM.
SSP	Synchronous Serial Port
SV	Satellite Vehicle
TDOP	Time Dilution of Precision. A measure of how much the geometry of the satellites affects the time estimate computed from the satellite range measurements.
3-D Coverage	The number of hours-per-day with four or more satellites visible. Four visible satellites are required to determine a three-dimensional position.
3-D Navigation	Navigation Mode in which altitude and horizontal position are determined from satellite range measurements.
TTF	Time To First Fix. The actual time required by a GPS receiver to achieve a position solution. This specification varies with the operating state of the receiver, the length of time since the last position fix, the location of the last fix, and the specific receiver design. See also Hot Start, Warm Start, and Cold Start mode descriptions.
2-D Coverage	The number of hours-per-day with three or more satellites visible. Three visible satellites can be used to determine location if the GPS receiver is designed to accept an external altitude input (Altitude Hold).
2-D Navigation	Navigation Mode in which a fixed value of altitude is used for one or more position calculations while horizontal (2-D) position can vary freely based on satellite range measurements.
UART	Universal Asynchronous Receiver/Transmitter. A device that produces an electrical signal and timing for transmission of data over a communications path, and circuitry for detection and capture of such data transmitted from another UART.
UDRE	User Differential Range Error. A one sigma estimate of the pseudorange measurement error due to ambient noise and residual multipath.
UERE	User Equivalent Range Error. A measure of the error pseudorange measurements due to GPS system errors.
Update Rate	The GPS receiver specification that indicates the solution rate provided by the receiver when operating normally. It is typically once per second.
UTC	Universal Coordinated Time. This time system uses the second defined true angular rotation of the Earth measured as if the Earth rotated about its Conventional Terrestrial Pole. However, UTC is only adjusted in increments of one second. The time zone of UTC is that of Greenwich Mean Time (GMT).
VCO	Voltage Controlled Oscillator

---

VDOP	Vertical Dilution of Precision. A measure of how much the geometry of the satellites affects the position estimate (computed from the satellite range measurements) in the vertical (perpendicular to the plane of the user) direction.
VSWR	Voltage Standing Wave Ratio
Warm Start	Start mode of the GPS receiver when current position, clock offset, and approximate GPS time are input by the user. Ephemeris data is not available.
WGS-84	World Geodetic System (1984). A mathematical ellipsoid designed to fit the shape of the entire Earth. It is often used as a reference on a worldwide basis, while other ellipsoids are used locally to provide a better fit to Earth in a local region. GPS uses the center of the WGS-84 ellipsoid as the center of the GPS ECEF reference frame.







## SiRF Sales Offices

---

### SiRF North America

#### Corporate Headquarters

+1-408-467-0410  
sales@sirf.com  
www.sirf.com

### SiRF Europe

#### Germany

+49-81-529932-90  
salesgermany@sirf.com

#### France

+33-6-0717-7862  
salesfrance@sirf.com

#### United Kingdom

+44-1344-668390  
salesuk@sirf.com

### SiRF Asia Pacific

#### India

+91-120-251-0256  
salesindia@sirf.com

#### Taiwan

+886-2-8789-6566  
salesasiapacific@sirf.com

#### Japan

+81-44-829-2186  
salesjapan@sirf.com

### SiRFDemo User Guide

Copyright © 1996-2006 SiRF Technology, Inc. All rights reserved.

Products made, sold or licensed by SiRF Technology, Inc. are protected by one or more of the following United States patents: 5,148,452, 5,175,557, 5,436,840, 5,488,378, 5,504,482, 5,552,794, 5,592,382, 5,638,077, 5,663,735, 5,745,741, 5,883,595, 5,897,605, 5,901,171, 5,917,383, 5,920,283, 6,018,704, 6,037,900, 6,041,280, 6,044,105, 6,047,017, 6,081,228, 6,114,992, 6,121,923, 6,125,325, 6,198,765, 6,236,937, 6,249,542, 6,278,403, 6,282,231, 6,292,749, 6,295,024, 6,297,771, 6,300,899, 6,301,545, 6,304,216, 6,351,486, 6,351,711, 6,366,250, 6,389,291, 6,393,046, 6,400,753, 6,421,609, 6,427,120, 6,427,121, 6,448,925, 6,453,238, 6,462,708, 6,466,161, 6,466,612, 6,480,150, 6,496,145, 6,512,479, 6,519,277, 6,519,466, 6,522,682, 6,525,687, 6,525,688, 6,526,322, 6,529,829, 6,531,982, 6,532,251, 6,535,163, 6,539,304, 6,542,116, 6,542,823, 6,574,558, 6,577,271, 6,583,758, 6,593,897, 6,597,988, 6,606,349, 6,611,757, 6,618,670, 6,633,814, 6,636,178, 6,643,587, 6,646,595, 6,650,879, 6,662,107, 6,665,612, 6,671,620, 6,675,003, 6,680,695, 6,680,703, 6,684,158, 6,691,066, 6,703,971, 6,707,423, 6,707,843, 6,714,158, 6,724,342, 6,724,811, 6,738,013, 6,747,596, 6,748,015, 6,757,324, 6,757,610, 6,760,364, 6,775,319, 6,778,136, 6,788,655, 6,788,735, 6,804,290, 6,836,241, 6,839,020, 6,850,557, 6,853,338, 6,856,794, 6,885,940, 6,888,497, 6,900,758, 6,915,208, 6,917,331, 6,917,644, 6,930,634, 6,931,055, 6,931,233, 6,933,886, 6,950,058, 6,952,440, 6,961,019, 6,961,660, 6,985,811, 7,002,514, 7,002,516, 6,971,458, 6,971,458, 7,031,339, 7,114,524, 6,002,290, 7-08, NI-180674, NI-197510, 156573, 163591, 178370, 178371, 240329, 459834, 468265, 729697, 0895599, 1238485, 2548853, 3,754,672, and 1 316 228. Other United States and foreign patents are issued or pending.

SiRF, SiRFstar, SiRFLoc, SiRFDrive, SiRFXTrac, and the SiRF logo are registered trademarks of SiRF Technology, Inc. SiRF Powered, SnapLock, FoliageLock, TricklePower, SingleSat, SnapStart, Push-to-Fix, SiRFNav, SiRFstarII, SiRFstarIII, SiRFSOFT, SiRFFlash, SiRFView, SoftGPS, Multimode Location Engine, UrbanGPS, SiRFLink, and WinSiRF are trademarks of SiRF Technology, Inc. Other trademarks are property of their respective companies.

This document contains information about SiRF products. SiRF reserves the right to make changes in its products, specifications, and other information at any time without notice. SiRF assumes no liability or responsibility for any claims or damages arising from the use of this document, or from the use of integrated circuits based on this data sheet, including, but not limited to claims or damages based on infringement of patents, copyrights, or other intellectual property rights. No license, either expressed or implied, is granted to any intellectual property rights of SiRF. SiRF makes no warranties, either express or implied with respect to the information and specification contained in this document. Performance characteristics listed in this document do not constitute a warranty or guarantee of product performance. SiRF products are not intended for use in life support systems or for life saving applications. All terms and conditions of sale are governed by the SiRF Terms and Conditions of Sale, a copy of which may obtain from your authorized SiRF sales representative.

March 2006



Please  
Recycle