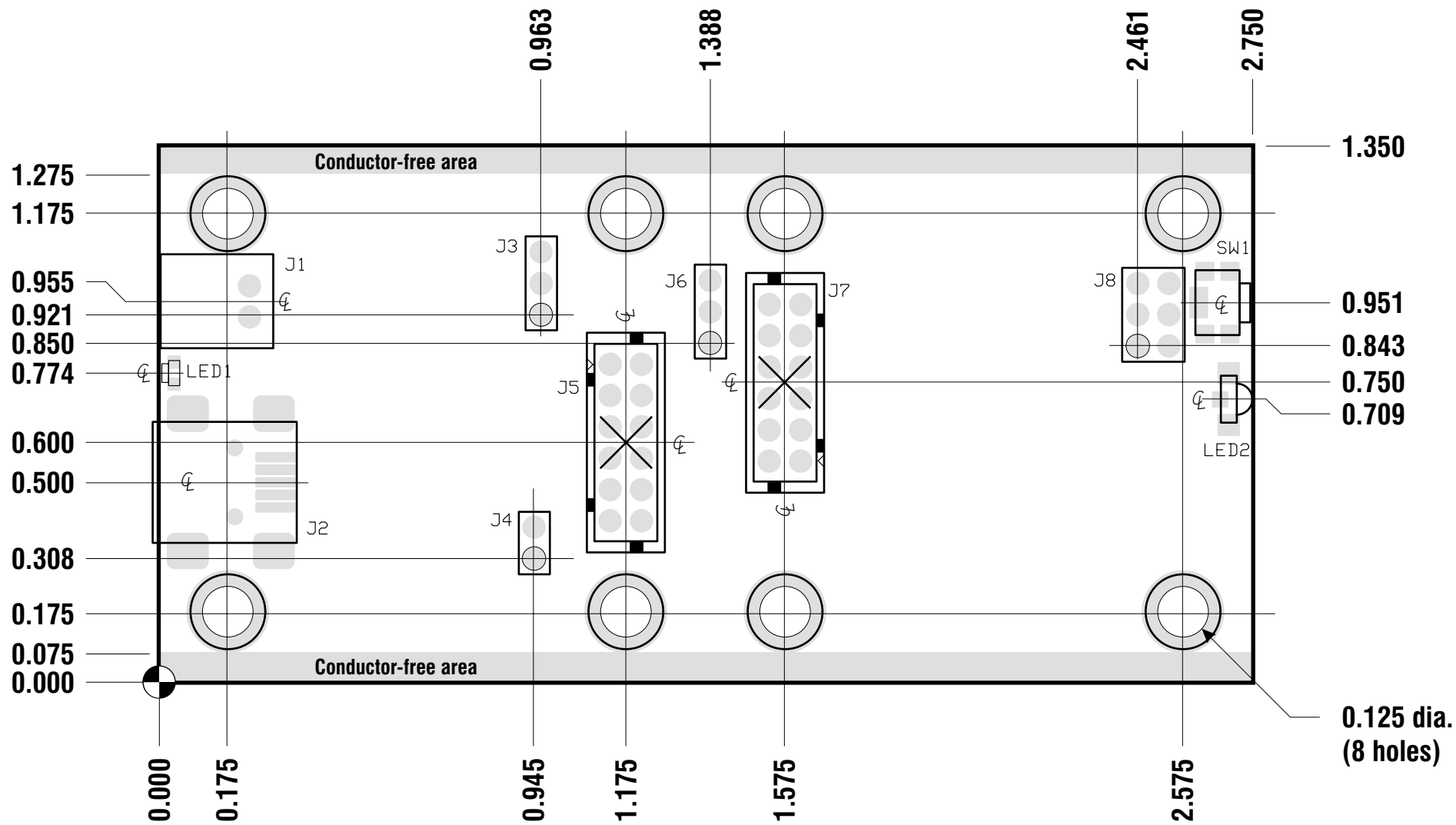


MoBoStamp-pe Dimensions



Coordinates are in inches, relative to lower-lefthand corner of board.

Reference point of daughterboard connectors (J5, J7) is center of hole pattern.

Nominal daughterboard size is 1.350" x 1.350", with upper-lefthand corner coincident to motherboard (0,0) or (2.750,1.350), above.

Daughterboards should be free of conductors (traces and groundplanes) within 0.075" of side edges (top and bottom, above).

Daughterboards should be free of conductors (traces and groundplanes) within 0.138" of mounting hole centers.

All vertical headers have a 2mm pitch.

Mating plugs for J5 and J7 are Hirose DF11-12DP-2DSA(24).

Mating cordset for J1 is Parallax #800-28300 (Hirose 2-pin DF3 series).

TITLE: MoBoStamp-pe Dimensions	
File Name: mobostamp-pe_dim.cdr	
Date: 4 Feb 2008 (Upd. 7 Mar 2008)	
Drwn: PCP	Rev: Q (v1.6)
Materials:	