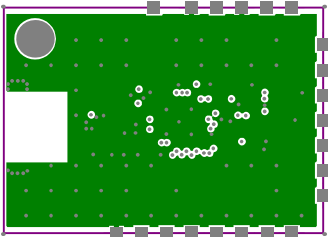
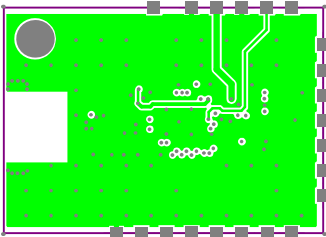


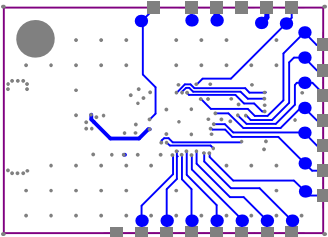
Project Name:	CSR1012 Module		
Board No:	H13174v1		
Variant:	[No Variations]		
Layer:	TOP COPPER	MECH #6	
	BOARD PROFILE		
Designed By:	CSR Cambridge, UK		
Date:	May 2013		
Notes:			
CSR Contact = M Bastin		01223 692000	
COMMERCIAL IN CONFIDENCE			



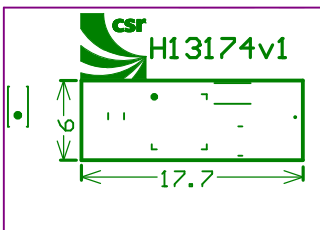
Project Name:	CSR1012 Module		
Board No:	H13174v1		
Variant:	[No Variations]		
Layer:	Layer 2 - Midlayer 1	MECH #6	
	BOARD PROFILE		
Designed By:	CSR Cambridge, UK		
Date:	May 2013		
Notes:			
CSR Contact = M Bastin		01223 692000	
COMMERCIAL IN CONFIDENCE			



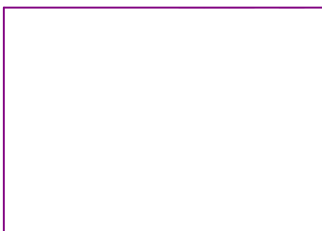
Project Name:	CSR1012 Module		
Board No:	H13174v1		
Variant:	[No Variations]		
Layer:	Layer 3 - Midlayer 2	MECH #6	
	BOARD PROFILE		
Designed By:	CSR Cambridge, UK		
Date:	May 2013		
Notes:			
CSR Contact = M Bastin		01223 692000	
COMMERCIAL IN CONFIDENCE			



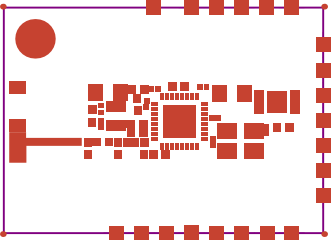
Project Name:	CSR1012 Module		
Board No:	H13174v1		
Variant:	[No Variations]		
Layer:	BOTTOM COPPER	MECH #6	
	BOARD PROFILE		
Designed By:	CSR Cambridge, UK		
Date:	May 2013		
Notes:			
CSR Contact = M Bastin		01223 692000	
COMMERCIAL IN CONFIDENCE			



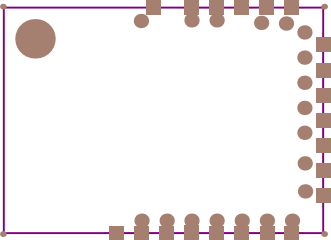
Project Name:	CSR1012 Module		
Board No:	H13174v1		
Variant:	[No Variations]		
Layer:	TOP SILKSCREEN	MECH #6	
	BOARD PROFILE		
Designed By:	CSR Cambridge, UK		
Date:	May 2013		
Notes:			
CSR Contact = M Bastin		01223 692000	
COMMERCIAL IN CONFIDENCE			



Project Name:	CSR1012 Module		
Board No:	H13174v1		
Variant:	[No Variations]		
Layer:	BOTTOM SILKSCREEN	MECH #6	
	BOARD PROFILE		
Designed By:	CSR Cambridge, UK		
Date:	May 2013		
Notes:			
CSR Contact = M Bastin		01223 692000	
COMMERCIAL IN CONFIDENCE			



Project Name:	CSR1012 Module		
Board No:	H13174v1		
Variant:	[No Variations]		
Layer:	TOP SOLDER RESIST	MECH #6	
	BOARD PROFILE		
Designed By:	CSR Cambridge, UK		
Date:	May 2013		
Notes:			
CSR Contact = M Bastin		01223 692000	
COMMERCIAL IN CONFIDENCE			



Project Name:	CSR1012 Module		
Board No:	H13174v1		
Variant:	[No Variations]		
Layer:	BOTTOM SOLDER RESIST		MECH #6
	BOARD PROFILE		
Designed By:	CSR Cambridge, UK		
Date:	May 2013		
Notes:			
CSR Contact = M Bastin		01223 692000	
COMMERCIAL IN CONFIDENCE			