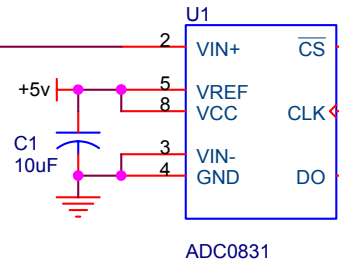
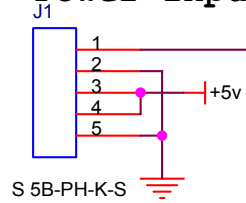
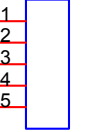


**GP2Y0A21YK Interface
Power Input**



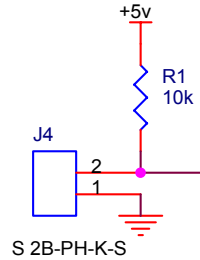
STAMP I/O

J2

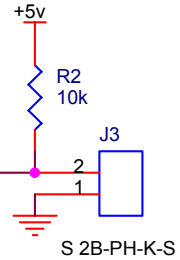


S 5B-PH-K-S

Left Switch Input



Right Switch Input



Gazbot Robotics, Inc. (c) 2002		
Title Gazbot™ Gazbot Infrared Distance Sensor		
Size A	Document Number gazbot-dis	Rev 1.0
Date: Tuesday, March 12, 2002	Sheet 1 of 1	