

**ACEMI Optronics Technology**  
**Product Specification**  
**2.7", 3.0"**  
**TFT-LCD Driver Board**

**FOR APPROVAL**

**MODEL NO.: AT9910-V2.1**

**PCB NO.: AT9910-V2.1**

**Customer's Approval**

Customer:	
Date:	
By:	

Confirmed By	Prepared By	Manufacture NO	
		Version	1.0
		Total Pages	6
		Date	2009.02

## Features

- Support AU 2.7" and 3.0"
  1. A027DL01 V1
  2. A030DL02
- Support NTSC and PAL video input auto change

## Mechanical Specification

### Board Dimension

Dimension	Specification	Unit
Length	69.0	mm
Width	51.0	mm
Thickness	7	mm

## Video Input Signal

Video-Composite signal 1.0 Vp-p 75Ω

## Operating Temperature

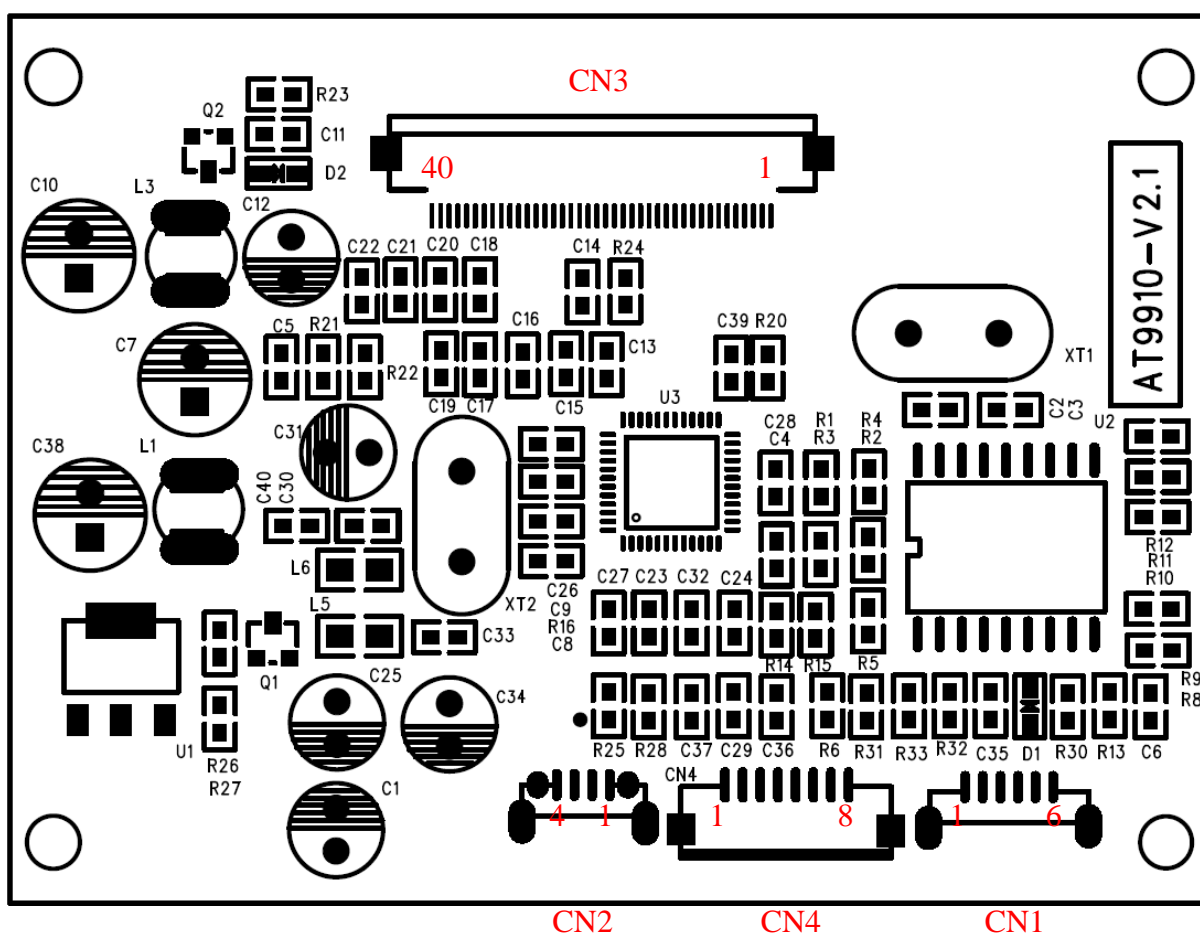
0°C ~ 70°C

**. Electrical Characteristics**

Item	Symbol	Condition	Min	Typ	Max	Unit	Remark
Supply Voltage	Vcc	GND = 0		5		V	
Supply Current	Icc	Vcc = 5		< 200		mA	

**Driver Board Specification**

**Terminal Drawing**



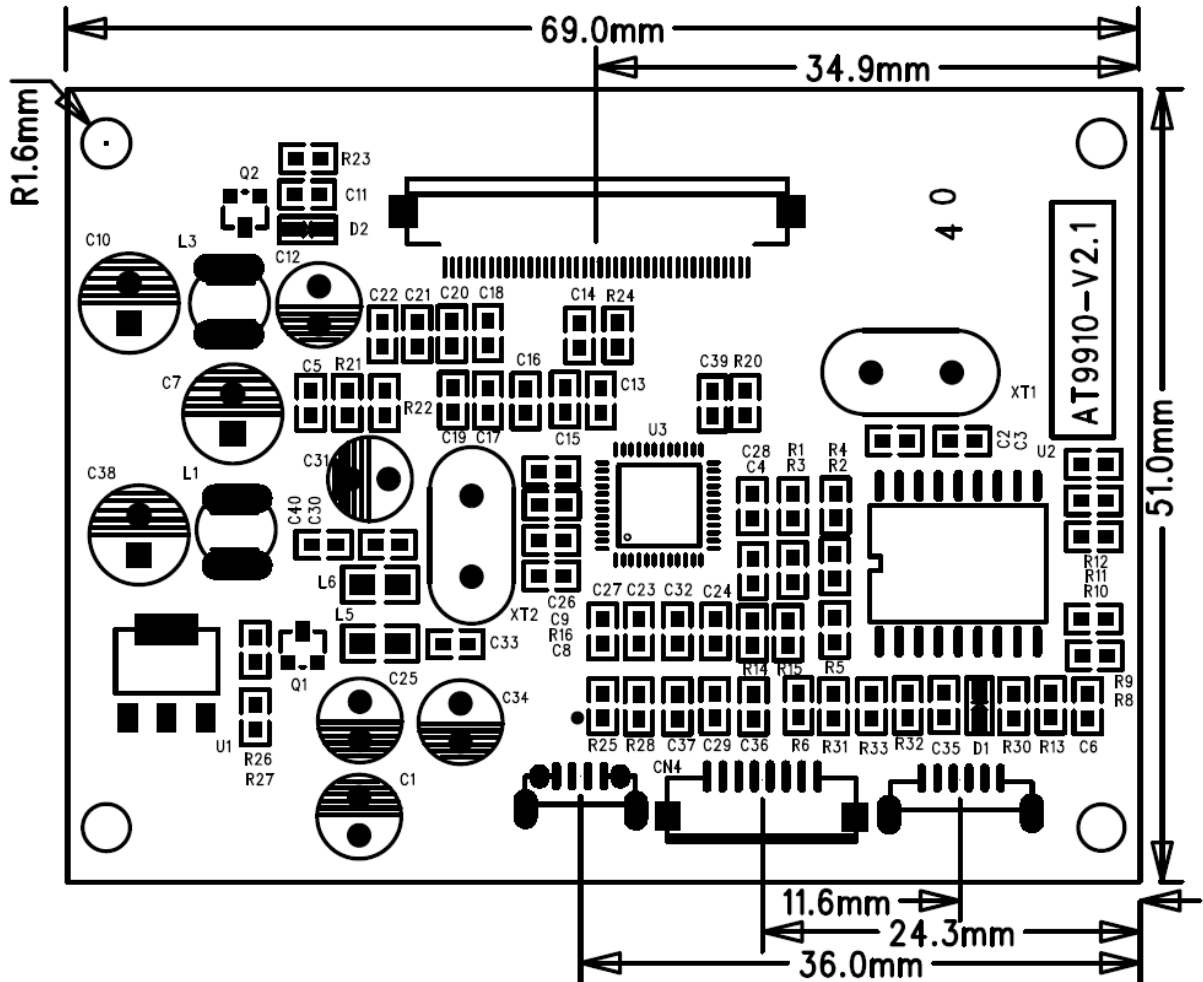
<b>CN1</b>	
<b>PIN</b>	<b>Connection</b>
1	Vdd = 3.3V (output)
2	Color Adjustment
3	GND
4	Vdd = 3.3V (output)
5	Brightness Adjustment
6	GND

<b>CN2</b>	
<b>PIN</b>	<b>Connection</b>
1	VCC +5V
2	GND
3	GND
4	CVBS (Video-Composite)

<b>CN3</b>	
<b>PIN</b>	<b>Connection</b>
1~40	TFT LCD FPC Connector

<b>CN4</b>	
<b>PIN</b>	<b>Connection</b>
1	VCC +5V
2	GND
3	CVBS (Video-Composite)
4	Vdd = 3.3V (output)
5	Contrast Adjustment
6	Brightness Adjustment
7	Color Adjustment
8	GND

# Outline Drawing



## Sales and Services

**Hong Kong Office:**

Unit 04, 12/F.,  
Heng Ngai Jewelry Centre,  
4 Hok Yuen Street East,  
Hung Hom, Kowloon,  
Hong Kong.

**Tel:** (852) 2764 7712

**Fax:** (852) 2333 5979

**Email:** [info@acemi.com.hk](mailto:info@acemi.com.hk)

**Website:** [www.acemi.com.hk](http://www.acemi.com.hk)