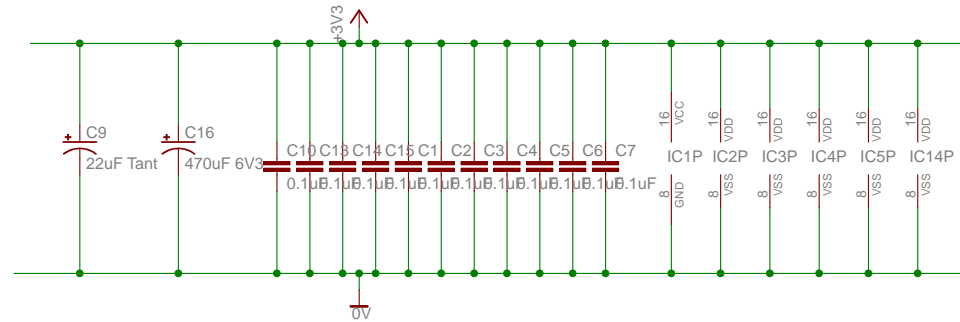
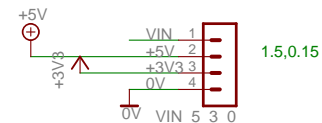


Propeller Eurocard Touchscreen 161

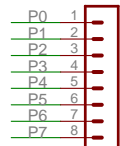


Default eagle board size 6.25x3.9. Holes at 0.15, 6.1, 3.75

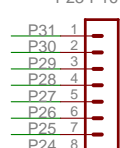
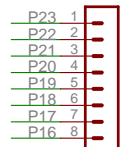
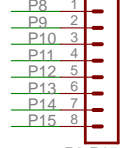
Autoroute with a grid of 10mil
 Components on board with a grid of 0.025
 Design rule check min track width 10mil
 Design rule check min pad to via 40mil



1.5, 0.15



Position 0.15, 0.8 5.45



GROUP

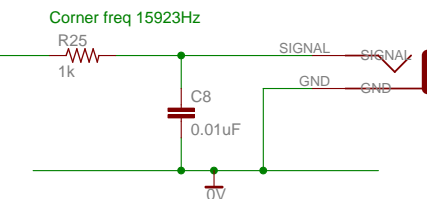
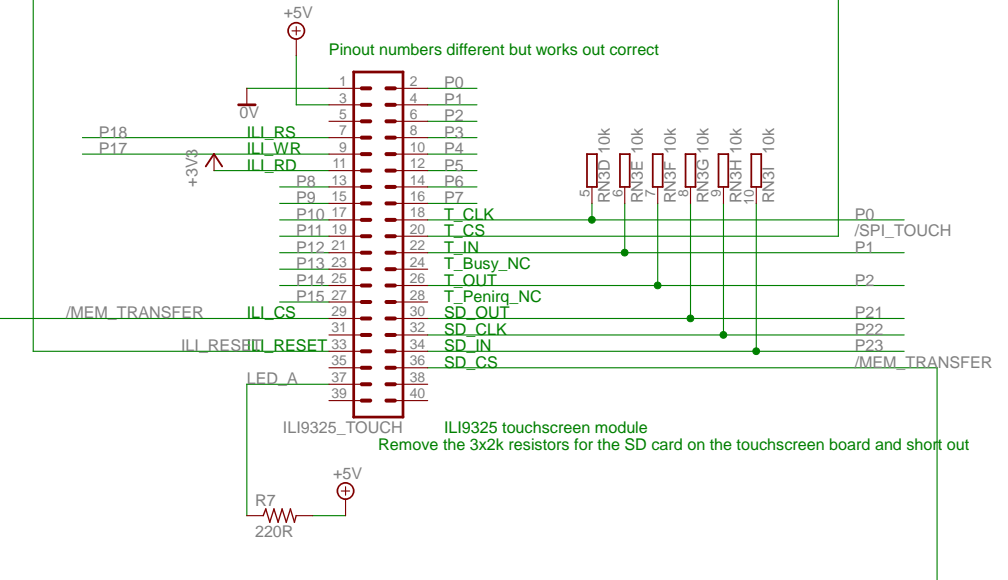
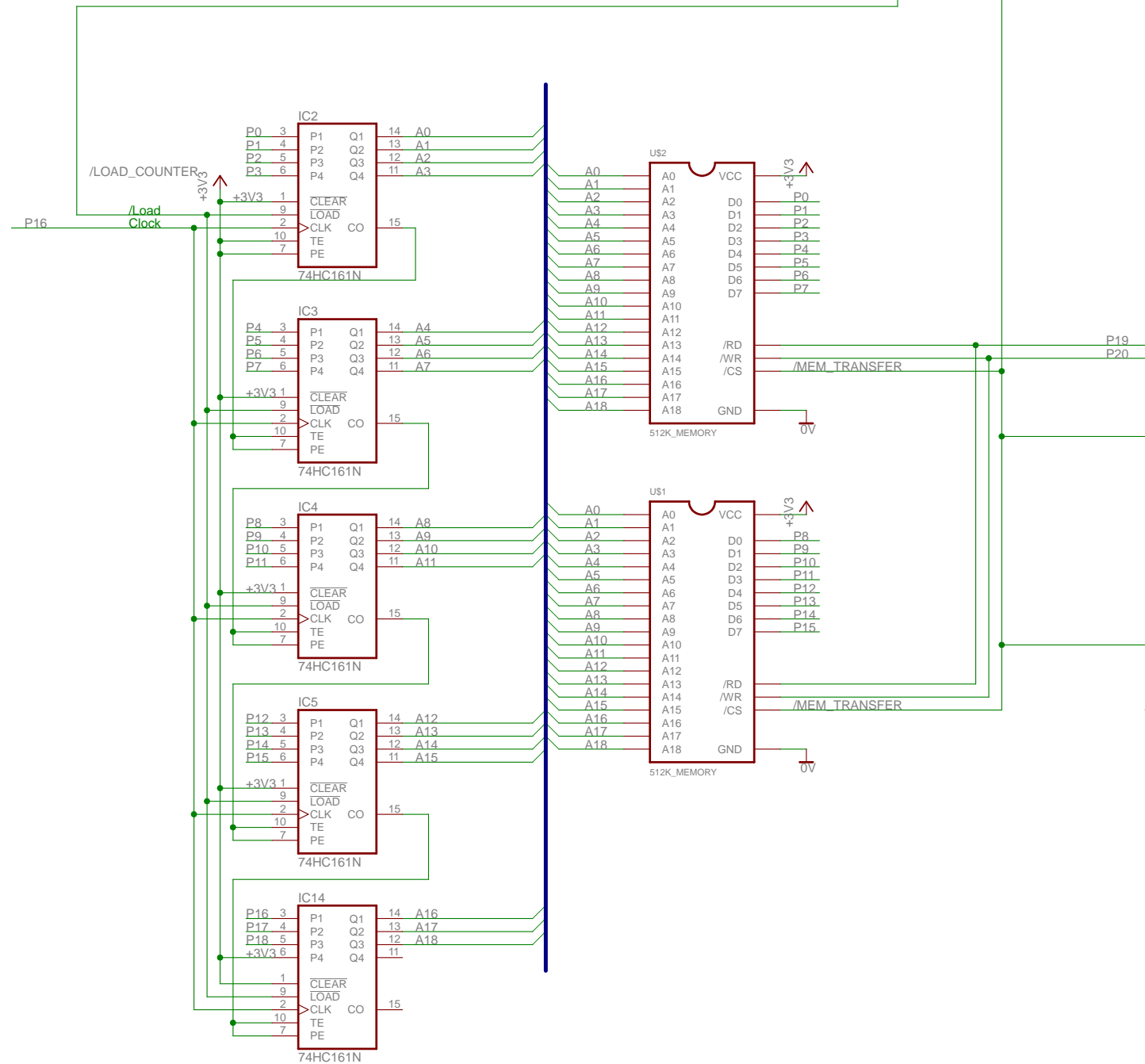
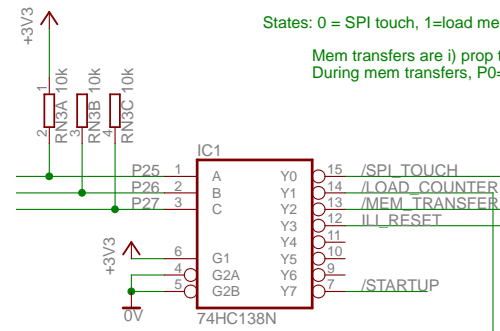


Need SD card and mem access to work at the same time

States: 0 = SPI touch, 1=load memory address, 2=mem transfers, 3 = reset ILI, 7=startup

Mem transfers are i) prop to ram ii) ram to prop iii) ram to display
 During mem transfers, P0=P15 are data and P16 up are control

P16=count, P17=ILI write, P18=ILI_RS, P19 = mem rd, P20=mem wr, P21-23=SD card, P24=audio



Audio output