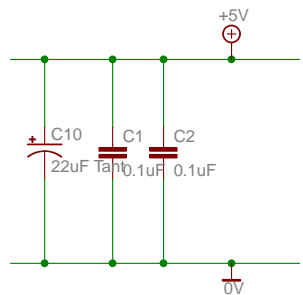
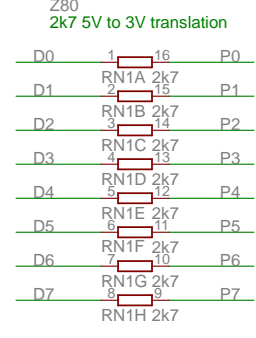
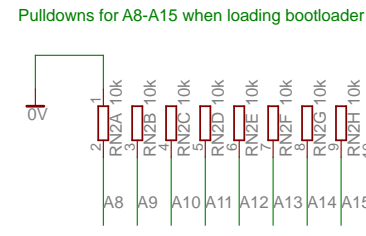
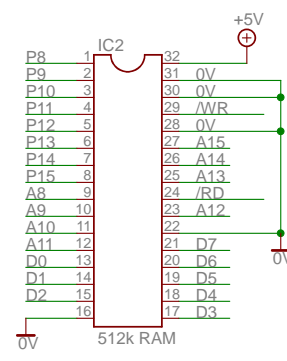
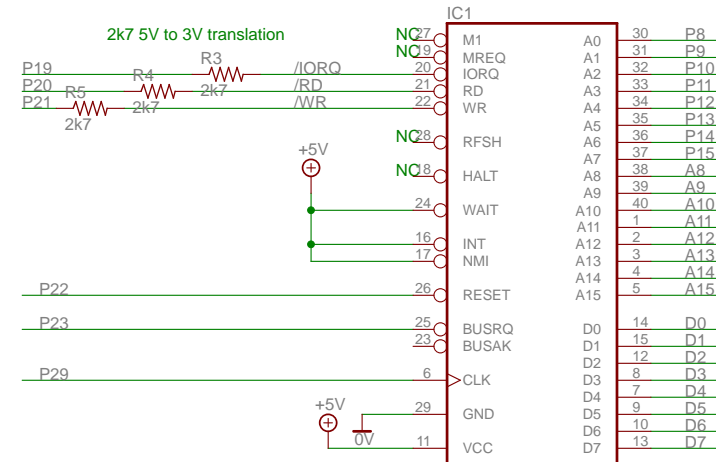
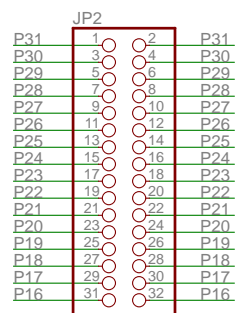
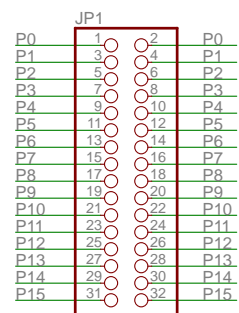
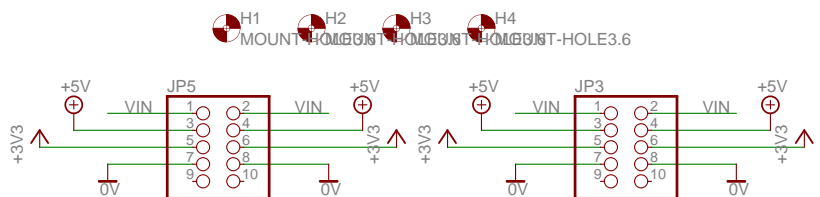


Z80 and Propeller Hybrid



Autoroute with a grid of 10mil
 Components on board with a grid of 0.025
 Design rule check min track width 10mil
 Design rule check min pad to via 40mil



P16-P18 are video (TV 3 pin, or VGA single color 3 pin)
 P19-P23 are free for Z80
 P0-P7 are data
 P8-P15 are A0-A7
 P29 is also free - eeprom data line
 If reset is held low then P29 can be Z80 clock as ignored at eeprom load at startup
 P12-P15 can be sd card the same as dracblade
 Busrq pulled low to disable Z80 and do sd card access
 Wait is not needed as the propeller is fast enough to detect an iorq and then hold the clock while sets up data and address lines
 P24-25 are second serial port
 P26-P27 are keyboard

