

Connecting and Testing

Connecting the HS1101 to a microcontroller is demonstrated here with a BASIC Stamp module. It is a straightforward application, requiring only one I/O pin. Since the HS 1101 is based on a unique capacitive cell, relative humidity can be obtained using a simple RC wiring diagram, as shown in Figure 1.

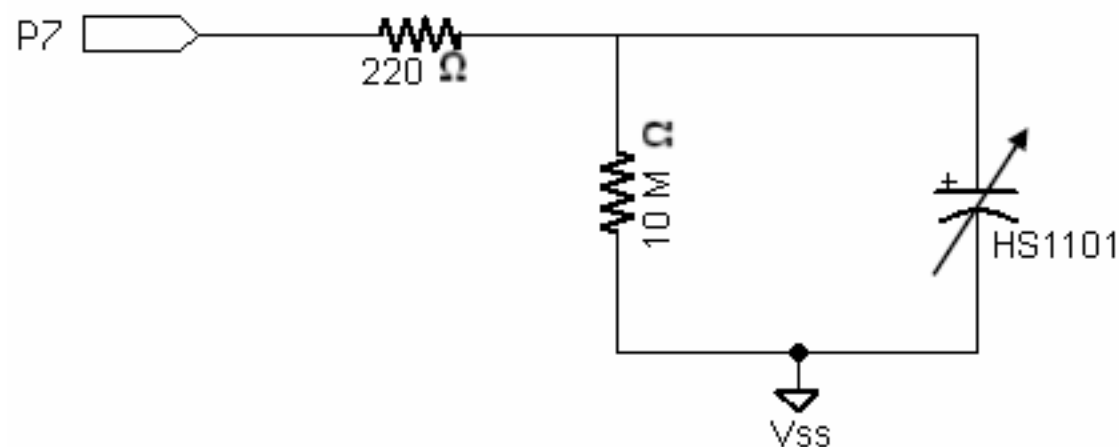


Figure 1: Sample RC Application Circuit

BASIC Stamp 2 Series Example

Below are the steps required to obtain relative humidity readings from the HS1101:

- √ Build the circuit shown in Figure 1. Be sure the negative side of the sensor is connected to ground as shown in Figure 2!

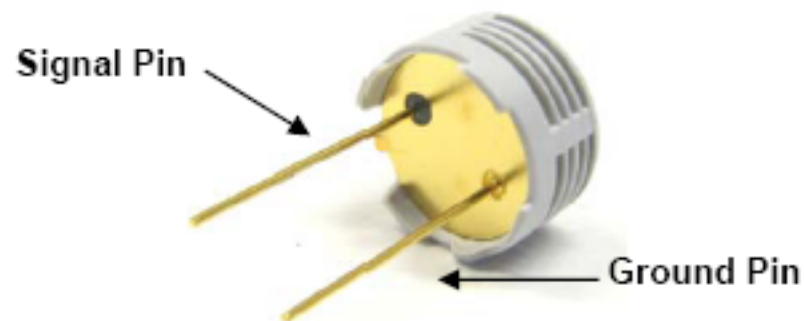


Figure 2: Signal and Ground Pins