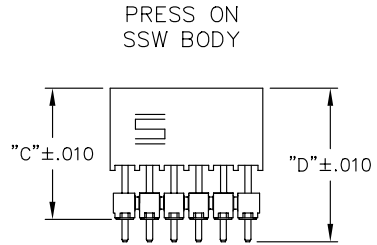
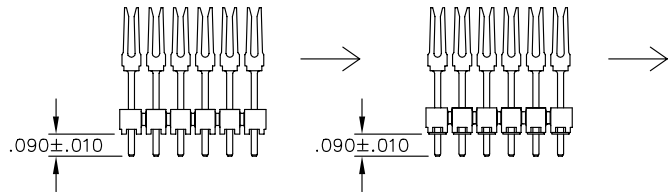


REV. BE

LOAD CONTACT

PRESS ON -MW



IN PROCESS  
-12, -33, -37, -58

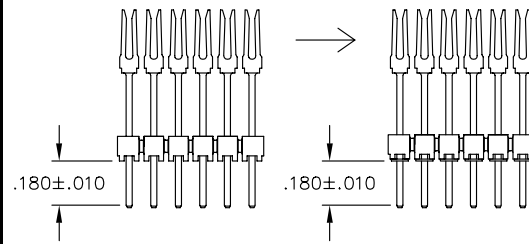
UNLESS OTHERWISE NOTED  
DIMENSIONS ARE IN INCHES TOLERANCES ARE:  
ONE PLACE DECIMALS ±.1[2.5] THREE PLACE DECIMALS ± .005 [.13]  
TWO PLACE DECIMALS ±.01[.25] FOUR PLACE DECIMALS ±.0020[.05]  
ANGLES ± 2°

TITLE: .100  
TERMINAL STRIP  
ASSEMBLY

DWG NO:  
ESQ-1XX-XX-X-X-XXX-XX-X-XX  
SHEET 2 OF 3

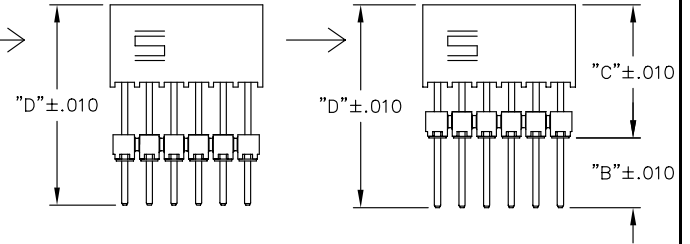
LOAD CONTACT

PRESS ON -MW



PRESS ON  
SSW BODY

REPRESS STACKER BODY  
AND -MW TO PROPER "C" DIM



IN PROCESS  
-13, -14, -23, -24, -34, -38,  
-39, -44, -48, -49, -59, -69

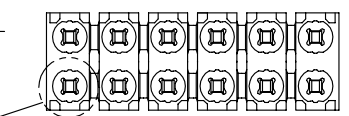
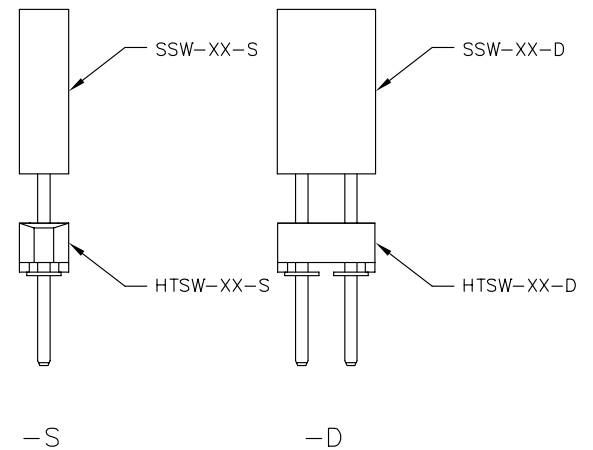
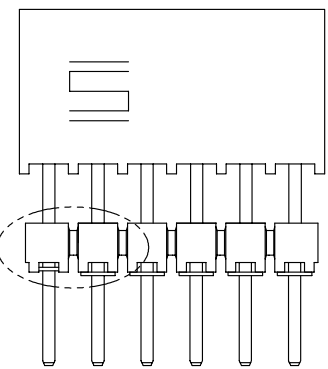
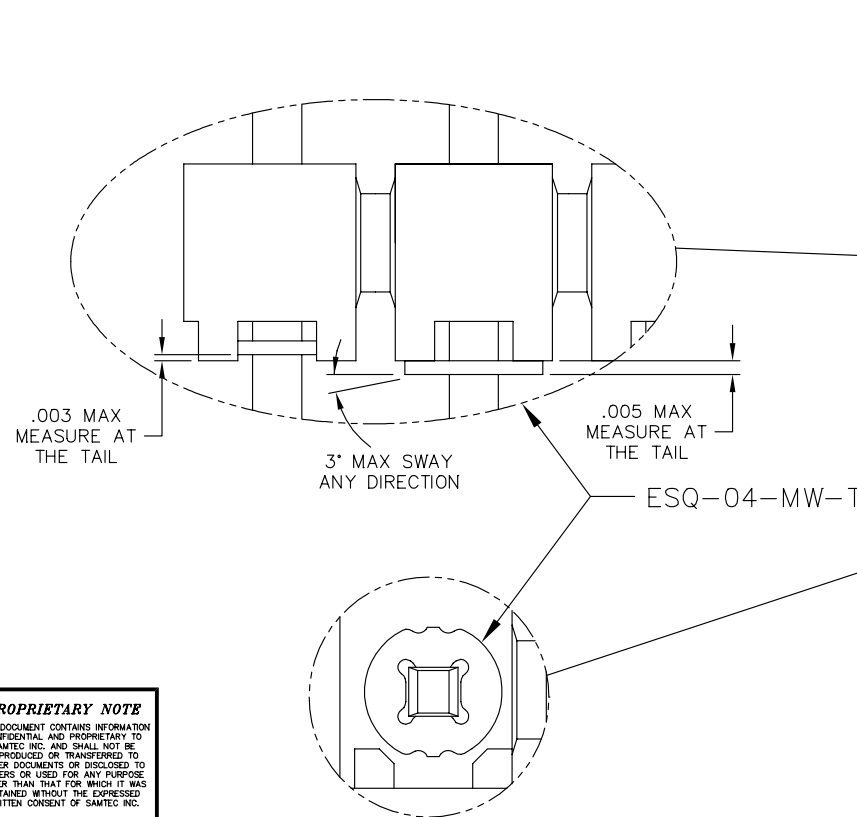


FIG. 2  
-H-MW: METAL WASHER  
(ONE PER POSITION)  
(-S & -D BODY SPECS ONLY)  
(SEE NOTE 7)

**PROPRIETARY NOTE**  
THIS DOCUMENT CONTAINS INFORMATION  
CONFIDENTIAL AND PROPRIETARY TO  
SAMTEC INC. AND SHALL NOT BE  
REPRODUCED OR TRANSFERRED TO  
OTHER DOCUMENTS OR DISCLOSED TO  
OTHERS OR USED FOR ANY PURPOSE  
OTHER THAN THAT FOR WHICH IT WAS  
OBTAINED WITHOUT THE EXPRESSED  
WRITTEN CONSENT OF SAMTEC INC.

**samtec**

MISC\MKTG\  
ESQ-MK2

520 PARK EAST BLVD. NEW ALBANY, INDIANA 47150  
PHONE (812) 944-6733 P.O. BOX 1147  
CODE 55322

MADE BY:  
WHITTAKER 9-11-98

ESQ-1XX-XX-X-X-XXX-XX-X-XX  
SHEET 2 OF 3

PLOT SCALE 1=2