

# Warranty Void

The Creative repurposing of electronics

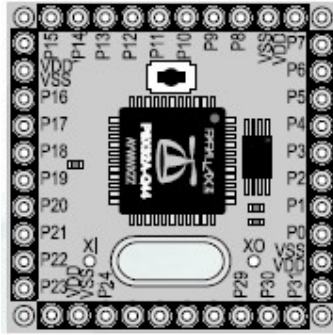
HOME

PARTS EXCHANGE

PROJECTS

FORUMS

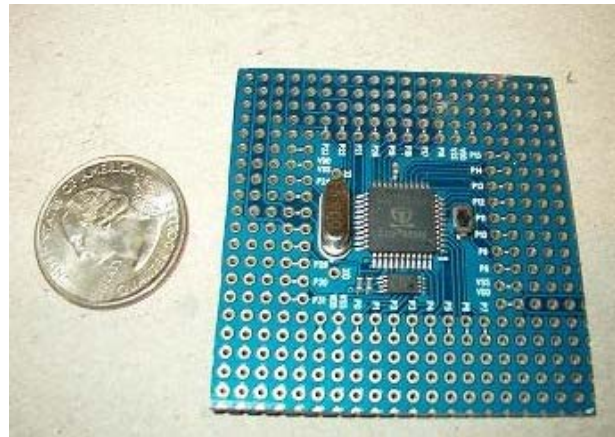
BLOG



## Making the Protoboard Smaller

Early in the original Propeller Cookbook text, I wrote a section on adding female pin headers to your protoboard as easy connection points. Using my paint program, I cut out a section of the image from the Protoboard documentation and painted in the female headers. (As seen on left) Forum user, Clemens took one look at that image and thought it might be interesting to actually cut a protoboard to that size. Amazing how creative the forum members are isn't it?

The beauty of the cut down protoboard or "nano" as it's been called is that it can be trimmed any way you please. There are some connection requirements covered here, but use this as "jumping off" point for your own design. Here's my own version of the "nano" before sanding it down a bit. A rotary tool is ideal, but even a slow precision cut with a hacksaw blade will do



Hippy [suggested](#) a rectangular cut, allowing pins to be brought out on either side for breadboard use, my own square cut left room for placement of video/audio resistors as well as connections for an SD interface. A minimal connection might just use the single row of connection holes closest to the chip itself. Keep in mind this is one of those measure twice, cut once situations.

[Here's some ideas](#) of what can be done with a cut-down protoboard.

A large, center cut image of the protoboard has been provided on the next page to assist you in planning your own project.

