

# Jeff's Prop Cookbook

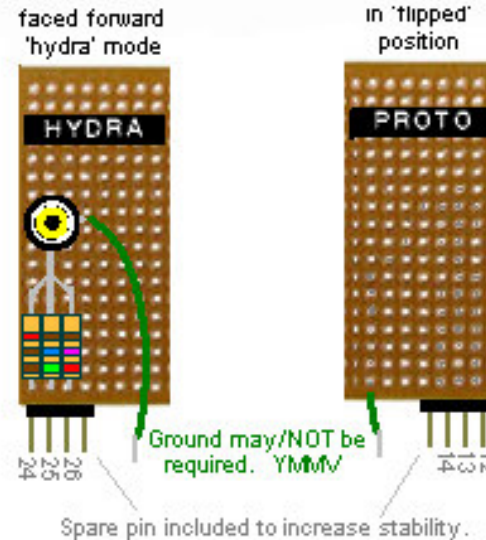
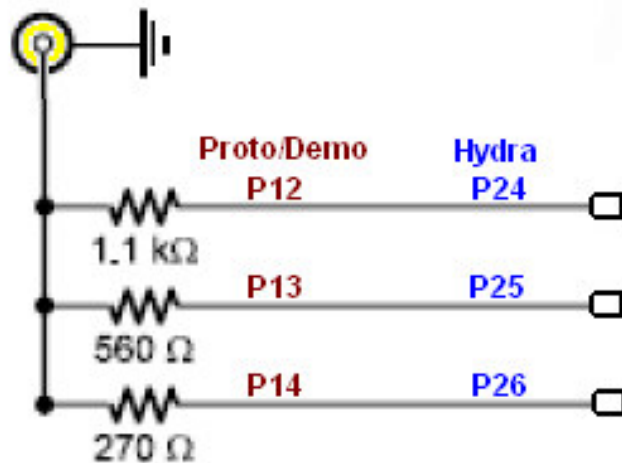
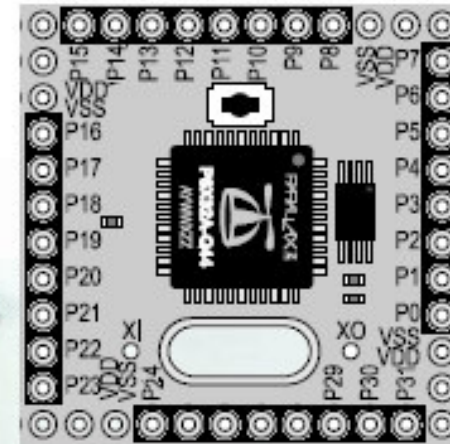
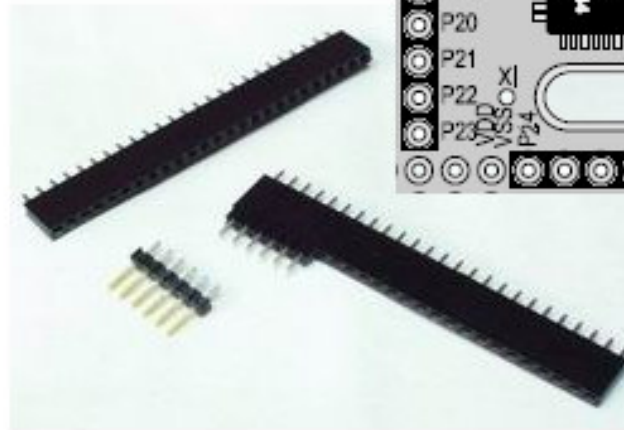
## Reversible Demo/Hydra Video Card

One of the first things I've done with my Protoboards is to fit them with 'Female Pin Headers' which allow easy access to the pins for both jumper wires and custom plug-in boards.

In an attempt to gain compatibility with the 'Hydra' product which uses different pin configuration for composite video, I fell on the idea of a reversible board.

When plugged in in forward direction into P24-P26, it is video compatible with the Hydra. When reversed and moved to P12-P14, it becomes video compatible with popular Demo/Protoboard designs.

Simplicity is always a great design. :)



This is another entry in Jeff's Propeller Cookbook.  
Jeff Ledger, A.K.A. Oldbitcollector  
jeffledger@gmail.com