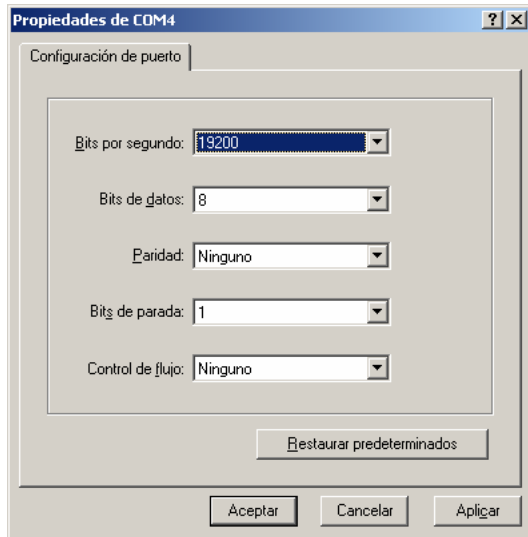


My project is the follow:

I need to get some data of a digital meter that talk RS485 and RS232 for I to make comparisons and it to make decisions.

1. The first is the configuration that is the follow: (utilizing HyperTerminal)

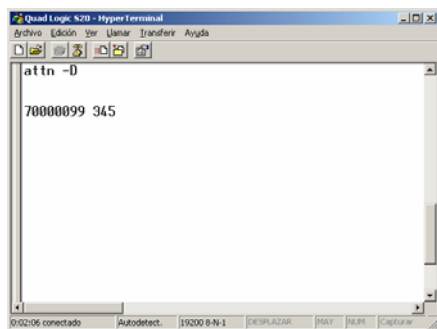


WHAT IS THE CORRECT SPEED FOR MY BS2P TO TALK WITH THE DIGITAL METER?

2. The second is, I have that to send an ASCII command to the digital meter for I know the ID of the Digital Meter and Store this ID in a variable in my BS2p.

Example.

I have that to send to the digital meter the ASCII command "attn -D", and the Digital meter have that to send to the BS2p the ID.

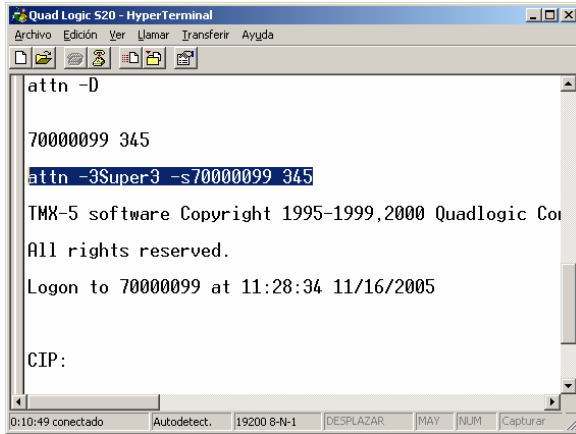


HOW CAN I RECEIVE AND TO STORE THIS ID IN MY BS2P IN A VARIABLE FOR THEN I LOGGIN IN THE DIGITAL METER?

3. Then I need to Logging in the meter with the ID stored previously.

Example.

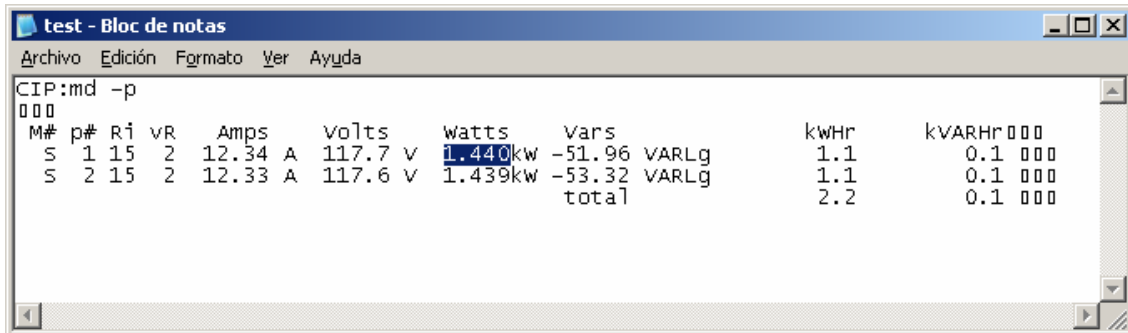
I have that to send an ASCII command “attn -3Super3 -s(ID) and then wait the prompt (CIP:).



4. Already I logged, I have to send an ASCII command for I get the DATA and then to store data in a variable. The DATA arrive in table form. **I need to capture the data from a Row and Column specify.**

Example.

I have to send to the digital meter “md -p” and to receive to DATA.



I need to store for example, the values in watts in variables' for I compare and my bs2p takes decisions.

I need this urgent for my project. **HOW CAN I DO, THIS??**