

SIM Reader User Menu

Content

- I. [Getting Started](#)
- II. [How to edit the Phone Book](#)
- III. [How to edit Short Message](#)
- IV. [PIN Management](#)
- V. [Error Message](#)

Annex I : [The editable reference table of Ring Tone and Picture Message for Nokia Model](#)

I. Getting Started

1. Connect the PC and card reader.
2. Plug in the SIM card into user's reader with the IC chip face down.
3. Click the main menu "Connect" icon.
4. "Connection Successful" will appear if the connection is successful. If it fails, the dialog box "Connection Failure" will appear. Please double check the connection of the reader and card.

PS : While inserting the new SIM card, users must click the "Connect" icon to let reader connect SIM card again, otherwise the error will occur.

II. Phone Book

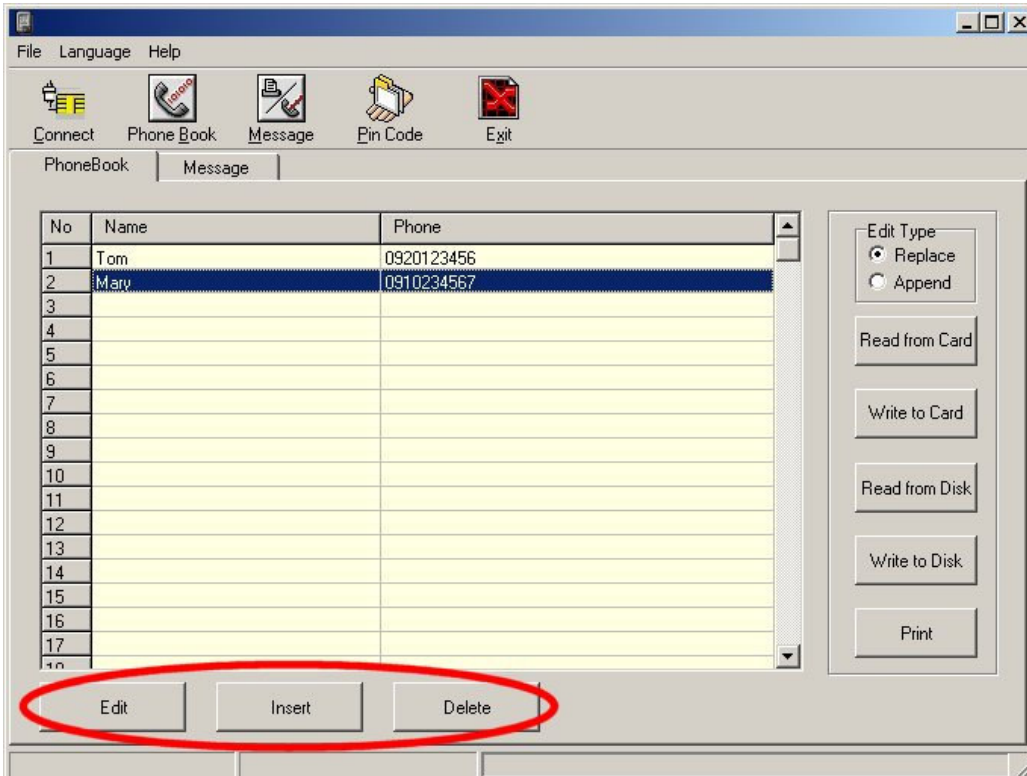
Phone Book	Phone book editing
Replace	Replace all the previous phone book
Append	Append phone book to the previous one.
Read from Card	Read the phone book data from the card
Write to Card	Write the phone book into the card
Open	Read the data from the Disk
Save	Write the data into the Disk
Print	Print out phone book

Step 1: Click the edit button for editing the phone book.

Step 2: Click "Read from Card " or "Read from Disk" button and read the data.

Step 3: There are modify, add and delete functions in the phone book editing application.

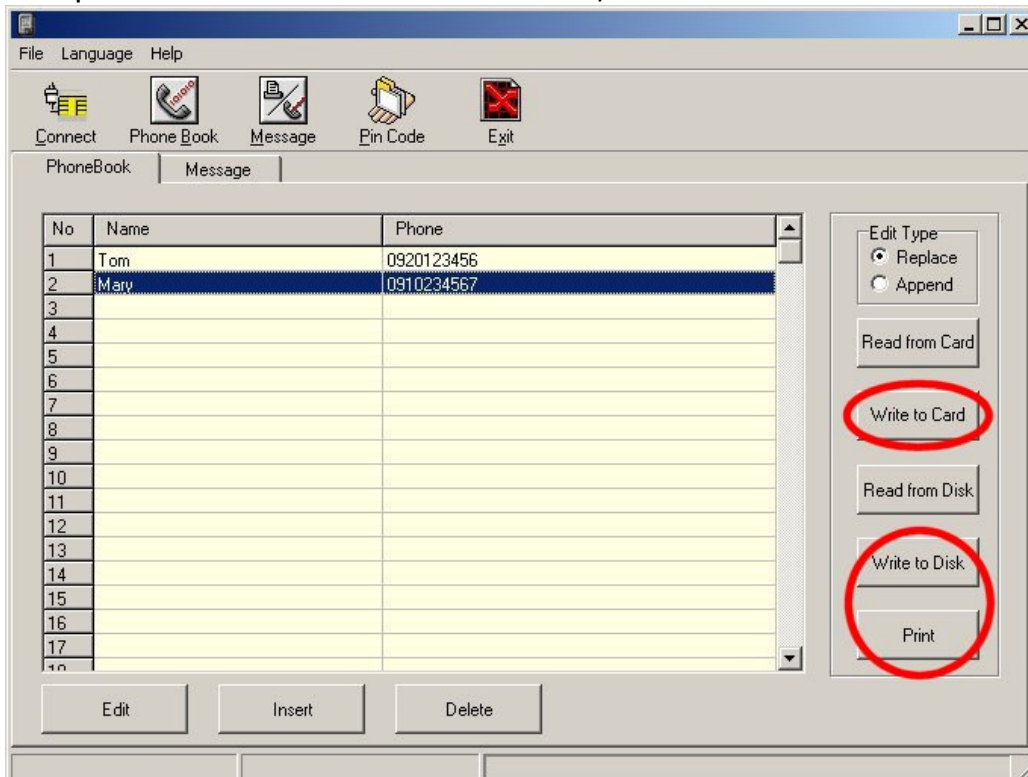
1. Edit — Click twice of your left button of the mouse or select the "Modify" button to enter the editor window.
2. Insert — Click the Add button to access to add window.
3. Delete — Delete a record for click the delete button.



Step 4: Select add or modify window. Do not over flow the data while update the data. Can enter the international call ID symbol "+" and pause sign "P" (such as +886920111111 and 0225052525p123).



Step 5: Write the data into the SIM card, PC or Print out.



Additional phone book function:

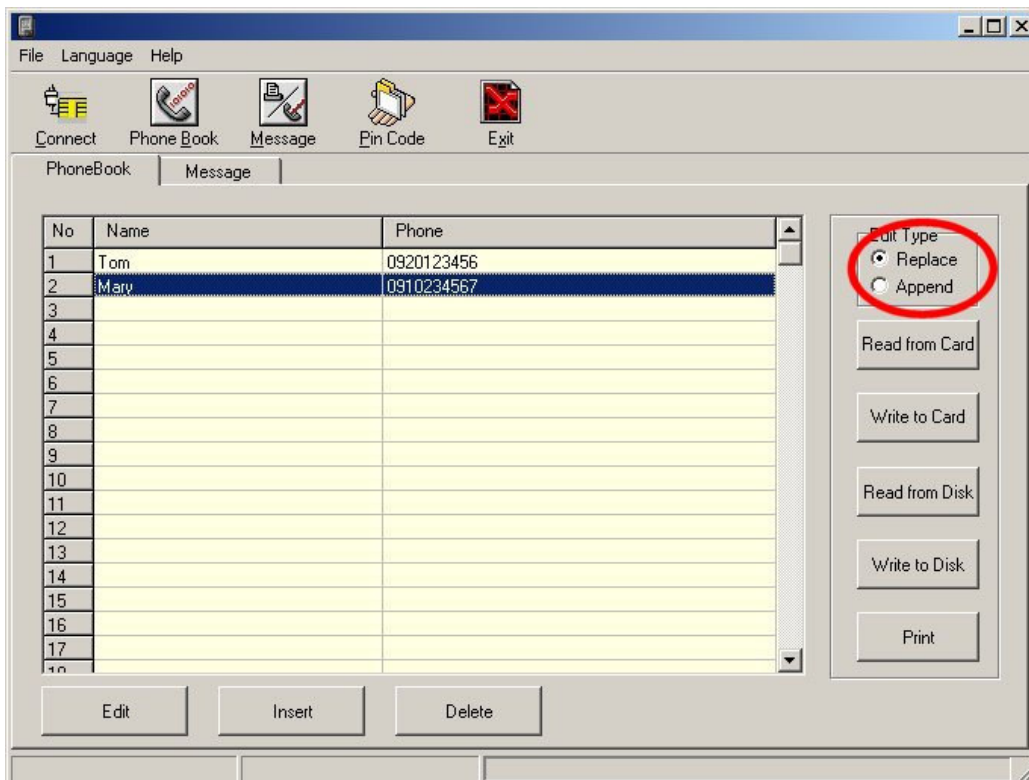
Step1: Read the phone book data from the original SIM Card and save to the PC.

Step2: Please select the "Open Disk Option" Menu and decide the way to display the phone book data.

PS.

- ◆ Replace --- Replace all the data with the original one.
- ◆ Append --- Add a new data behind the original one.

Step3: After select the option mode, select the needed data and write into the card.



III. Short Message

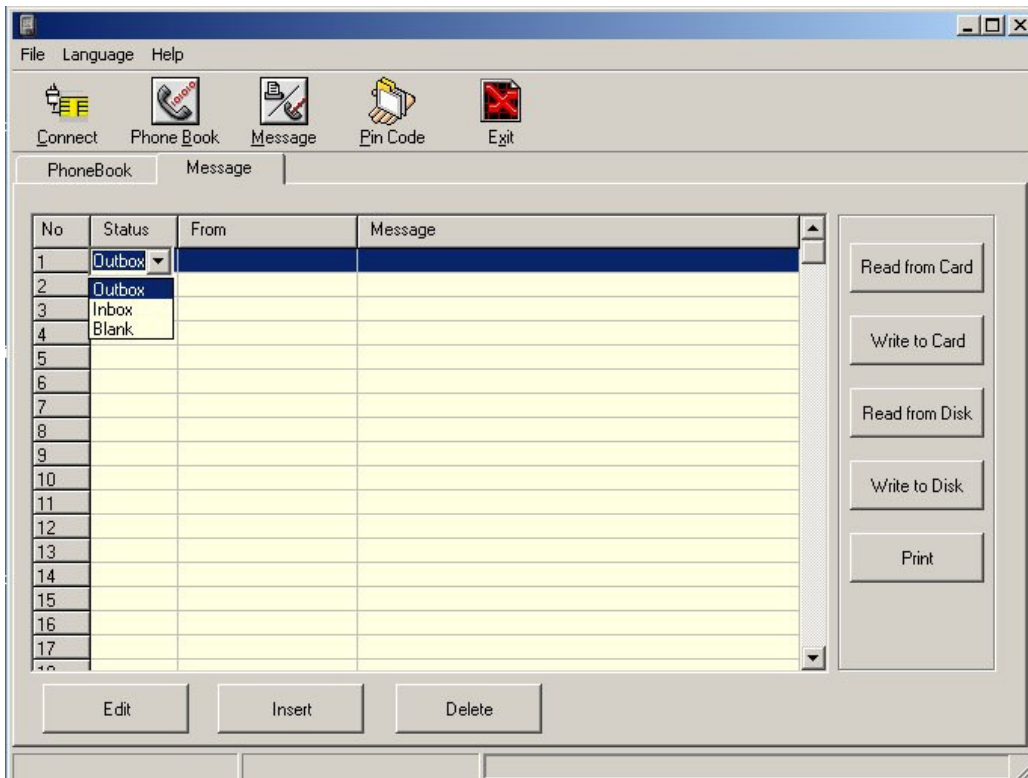
Short Message	Short message editing
Read from Card	Read the SMS from the card
Write to card	Write the SMS to SIM card
Read from Disk	Read the data from the Disk
Write to Disk	Write the SMS into Disk
Print	Printout the SMS

Step 1: Select SMS edit pane

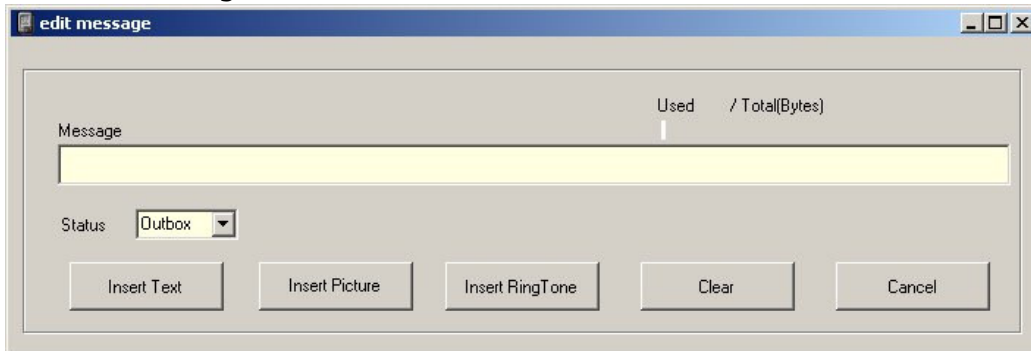
Step 2: Click "Read from Card " or " Read from Disk "button to read data.

Step 3: In the SMS edit panel, user can modify, add and delete.

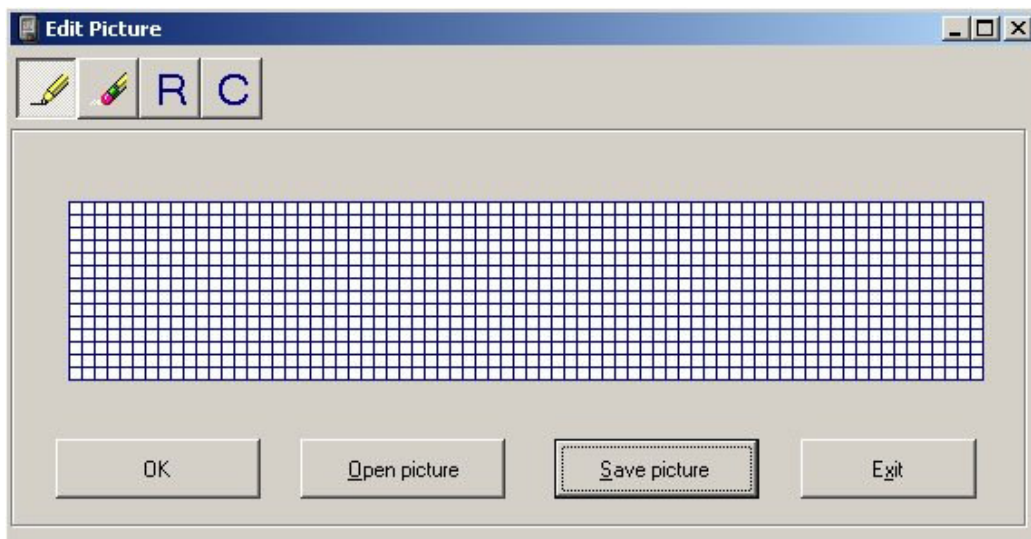
1. Edit — Click twice of your left button of the mouse or select the "Modify" button to enter the editor window.
2. Insert — Click the Add button to access to add window.
3. Delete — Delete a record for click the delete button.



Step 4: In the modify or add Window please click "Insert Text "button, then edit the new message and select the picture by click the "Insert Picture "button. For extra Ring tone, click "Insert Ring Tone" button.



Step 4.1: Add the Picture (Only for Nokia handsets)

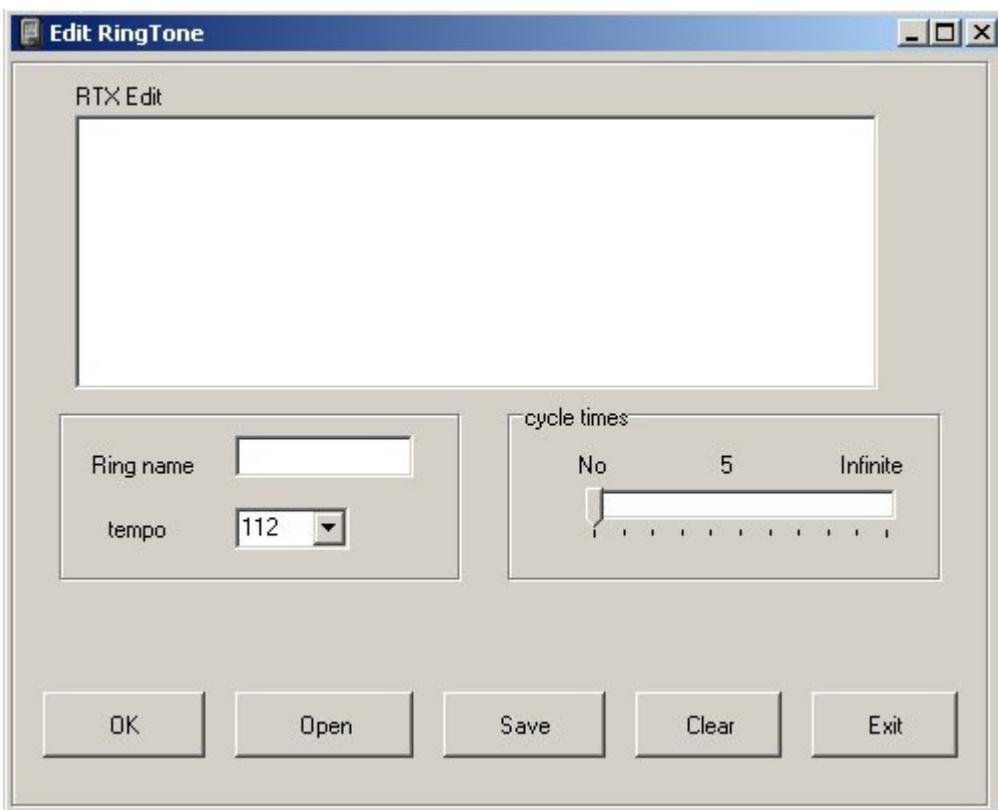


1. Icon Pencil ---Can edit the picture.
2. Icon Eraser --Erase the unwanted picture ◦
3. Icon R – Reverse the picture to opposite direction.
4. Icon C – Clear Screen

Step 4.2: Add Ring Tone (Only for Nokia handsets)

Description

1. Music compose panel— Please compose RTX musical notation with a pace following with a tone. (Please take the menu of Nokia for reference.)
2. Name of Music—Please key in the less than 6 digit English character as the name of the music. The name will display on the handset.
3. Tempo—Please select the tempo of the music.
4. Frequency of the Ring tone — Can select from 0 to ∞ .



Musical notation index:

Every sound is made of length of Musical Notation + note + Scale + Space. Please remember to enter the space insure a whole musical sound is formed.

The length of Musical Notation

Length of Note	Whole note	1/2 note	1/4 note	1/8 note
Symbol char	1	2	4	8
Length of Note	1/16 note	1/32 note	Dot	
Symbol char	16	32	.	

Musical Notation

Symbol Note	Do	Re	Mi	Fa	So	La	Si
Symbol char	c	d	e	f	g	a	B
Symbol Note	Do#	Re#		Fa#	So#	La#	Rest
Symbol char	#c	#d		#f	#g	#a	—

Musical scale

Musical scale	Sharp	Regular	Flat
Symbol Char	3	2	1

PS. Users can download the RTX file from the Internet and paste the RTX file data into the RTX edit panel.

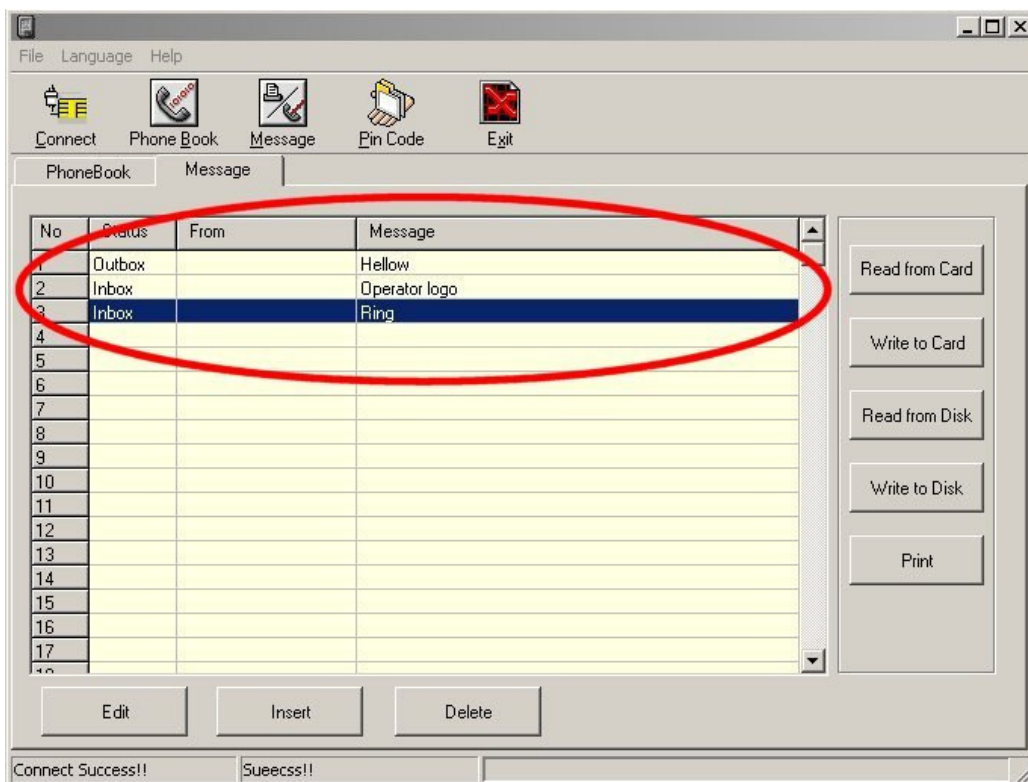
Step 5: Click the "OK" button after finish editing the file including the Ring Tone and Picture.

Step 6: write the data in card, on PC or print out.

Step 6.1: For double confirm data by accessing read command to see if the data has been successful load into the card. (See below Diagram as an example. If the data is correct, operator logo column will feat back value 9 and the Tong column will be 1)

PS:

1. Outbox indicate SMS that will be sent.
2. Inbox indicate SMS that received in your handset.
3. Blank indicate that buffer of the SMS.
4. "Operator logo"---Where the picture should belong to.



CAUTION:

1. To access the new picture and ring ton, please insert your new editor SIM card into your handset. Select Message ---Inbox--- read the SMS that "9"(indicate Picture) and "1" (indicate the ring tone) and forward again to user itself again.
2. Picture message is allowing only sending to user that has same operator system.
3. Ring Tone can send to others without any restriction.

IV. PIN Management

1. Change status of PIN1/Unblock PIN1—

(1) User can change PIN in the condition of unblock PIN 1.

(2) Please enter PUK1 to unblock the PIN 1.(If the PIN1 is under the condition of disable, please



The screenshot shows a Windows-style dialog box titled "PIN Manager". It has two tabs: "Enable/Disable PIN1" and "Change/Unblock PIN1", with the second tab selected. The dialog contains three text input fields labeled "Old PIN1", "New PIN1", and "New PIN1 (Again)". Below these fields are two buttons: "OK" and "Cancel".

enable it first before entering the PUK1.

2. Change PIN number— can modify new Pin of a card. Default setting of the card is PIN1 0000 with PIN1 disable. Users can manage the PIN by themselves through PIN Manage.



The screenshot shows the same "PIN Manager" dialog box, but with the "Enable/Disable PIN1" tab selected. It features two radio button options: "PIN1 Enable" (which is selected) and "PIN1 Disable". Below these options is a text input field labeled "PIN1". At the bottom, there are "OK" and "Cancel" buttons.

V. Error Message

1. If it fails to read data, please remember to click the "Connect" button while push in or draw out a new card.
2. COM port has been used by another application. Please close the other applications while access the SIM Magic II application.
3. Check whether SIM card has been proper placed. Please place chip with golden plate face down and the slash corner outside.
4. Defective SIM card or contact failure. Please clean the SIM card contact point.

Annex1 : The reference table of Ring Tone and Picture Message (only for Nokia)

Model	Ring Tone Editing	Picture Message Editing
3210	V	V
3310	V	V
3330	V	V
5110		V
5130		V
5510	V	V
6110	V	V
6130	V	V
6150	V	V
6210	V	V
6250	V	V
7110	V	V
8110i	V	
8210	V	V
8310	V	V
8810	V	V
8850	V	V
8890	V	V
9110	V	V
9110i	V	V
9210	V	V