

## Twin Cord End Ferrules

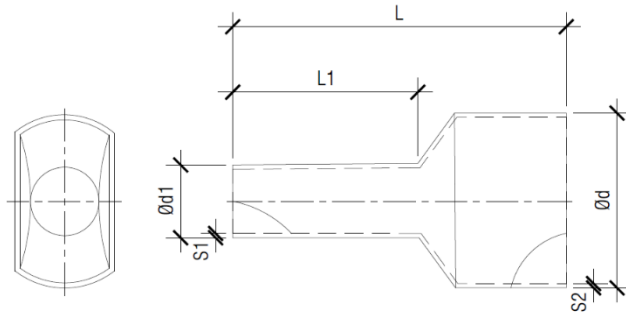
### Specifications

- Material: Tin-plated Copper
- Insulation Material: Nylon 66
- Packaging: Loose pieces in pre-sealed plastic packets

### Product Images



### Product Details and Dimensions



Part No.:	Conductor Size (mm)	L1	L	d	d1	S1	S2	Colour	Pack Qty
CE050T	0.5	8.0	15.0	2.5/4.7	1.5	0.15	0.25	White	500
CE075T	0.75	8.0	15.0	2.8/5.0	1.8	0.15	0.25	Grey	500
CE010T	1.0	8.0	15.0	3.4/5.4	2.05	0.15	0.30	Red	500
CE015T	1.5	8.0	16.0	3.6/6.6	2.3	0.15	0.30	Black	500
CE025T	2.5	10.0	18.5	4.2/7.8	2.8	0.20	0.30	Grey	500
CE040T	4.0	12.0	23.0	4.9/8.8	3.7	0.20	0.40	Orange	100
CE060T	6.0	14.0	26.0	6.9/10.0	4.8	0.20	0.40	Yellow	100
CE100T	10.0	14.0	26.5	7.6/12.8	6.4	0.20	0.50	Red	100

Subject to change without notice