

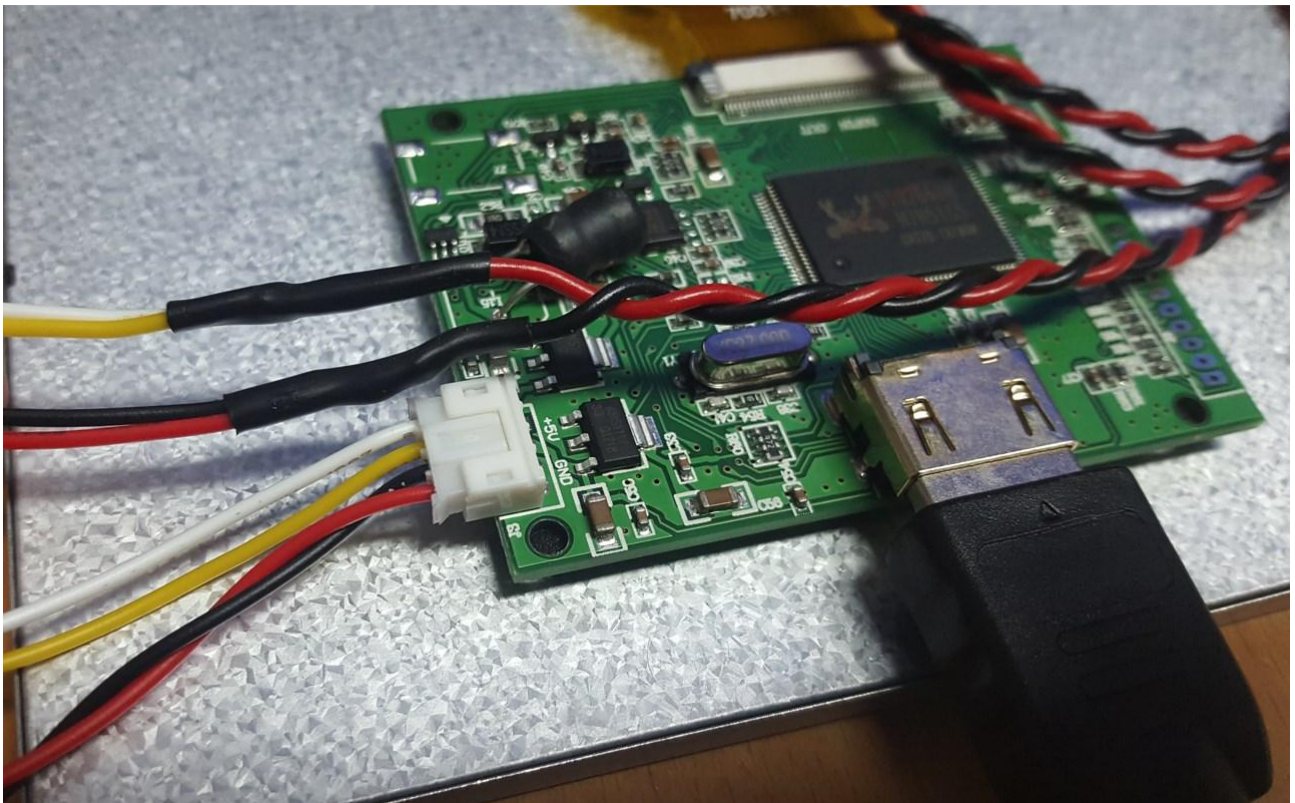


PARALLAX

7" HDMI Display, 800 x 480

SKU 27390

<https://www.parallax.com/product/7-hdmi-display-800-x-480/>



Wiring information:

5V power source should be connected to the PCB at the white 4-pin header. The PCB is marked with +5V and GND to indicate the connections.

The top-left 2 pins are both +5V and the bottom-right 2 pins are both GND.

The cable colors may vary, but in the image above the white and yellow cables should be joined together and both connected to +5V. The black and red cables should be joined together and both connected to GND. Always follow the marking on the PCB in-case the wire colors vary on your product.

The video connector is a standard HDMI video socket, and typically a male-male HDMI cable would be required to connect this monitor to an HDMI video source, such as the P2 Digital Video accessory : <https://www.parallax.com/product/p2-eval-digital-video-out-add-on-board/>