

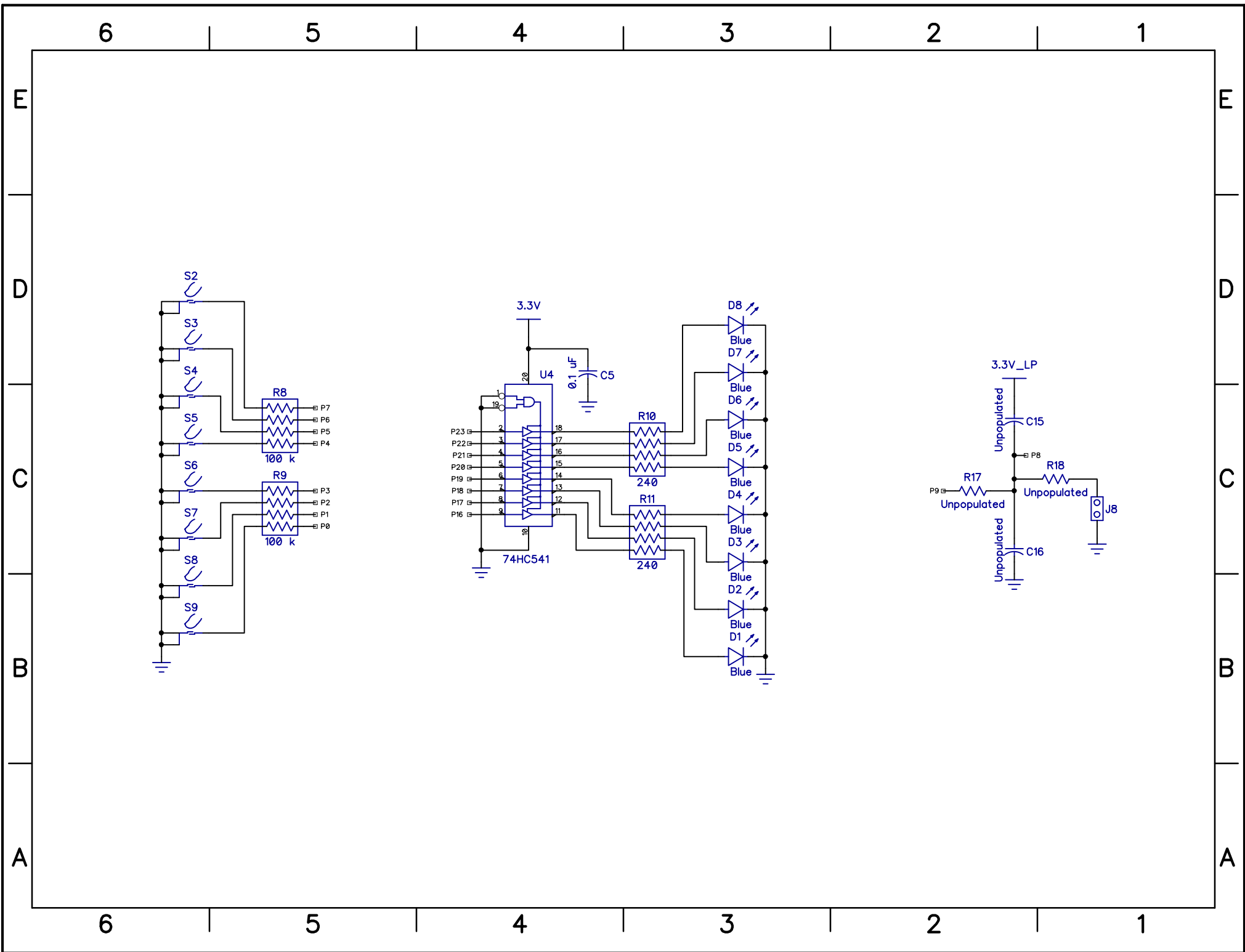
Parallax Inc.  
 599 Menlo Drive  
 Rocklin, CA 95765  
 (916) 624-8333  
<http://www.parallax.com/>

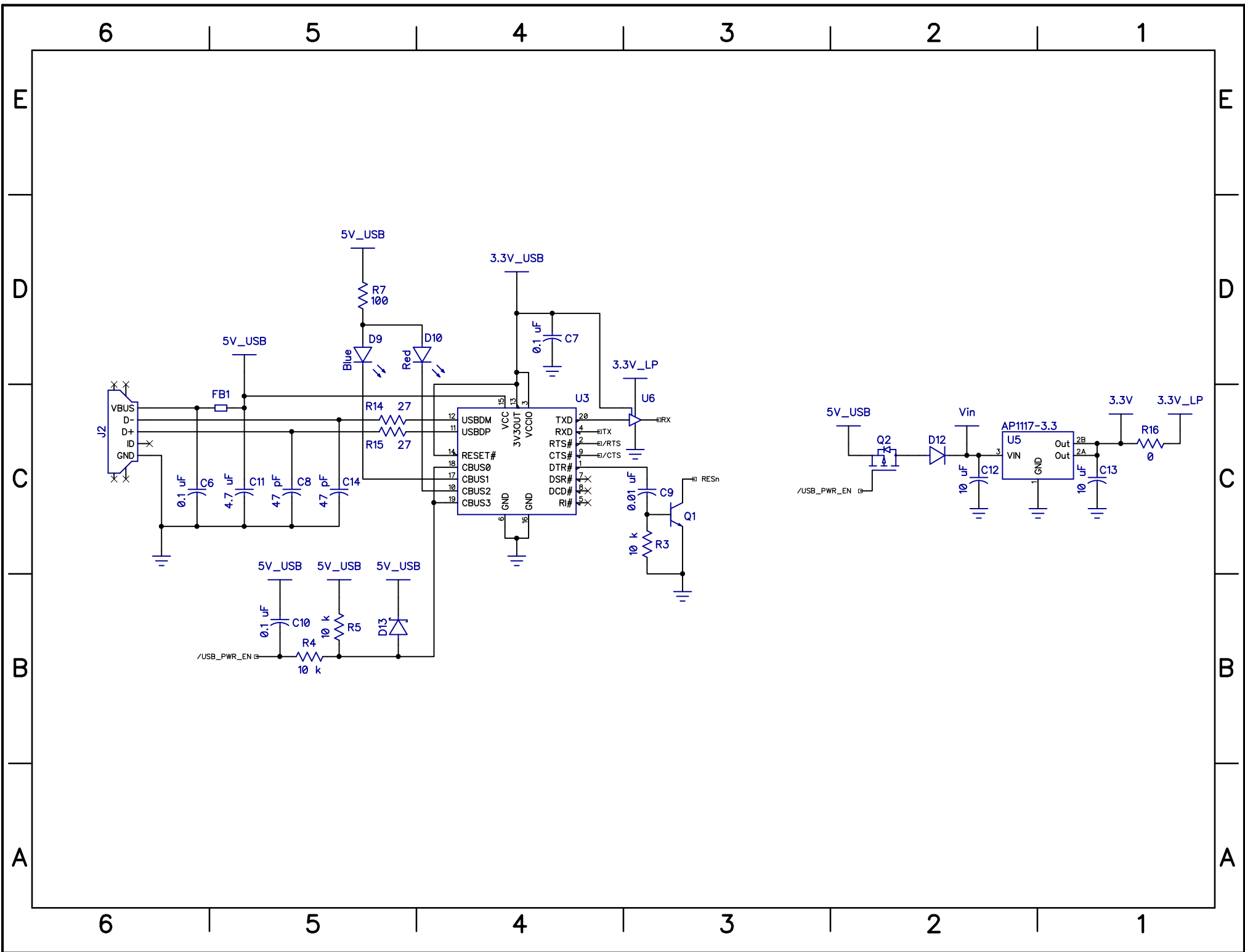
### Propeller QuickStart Schematic

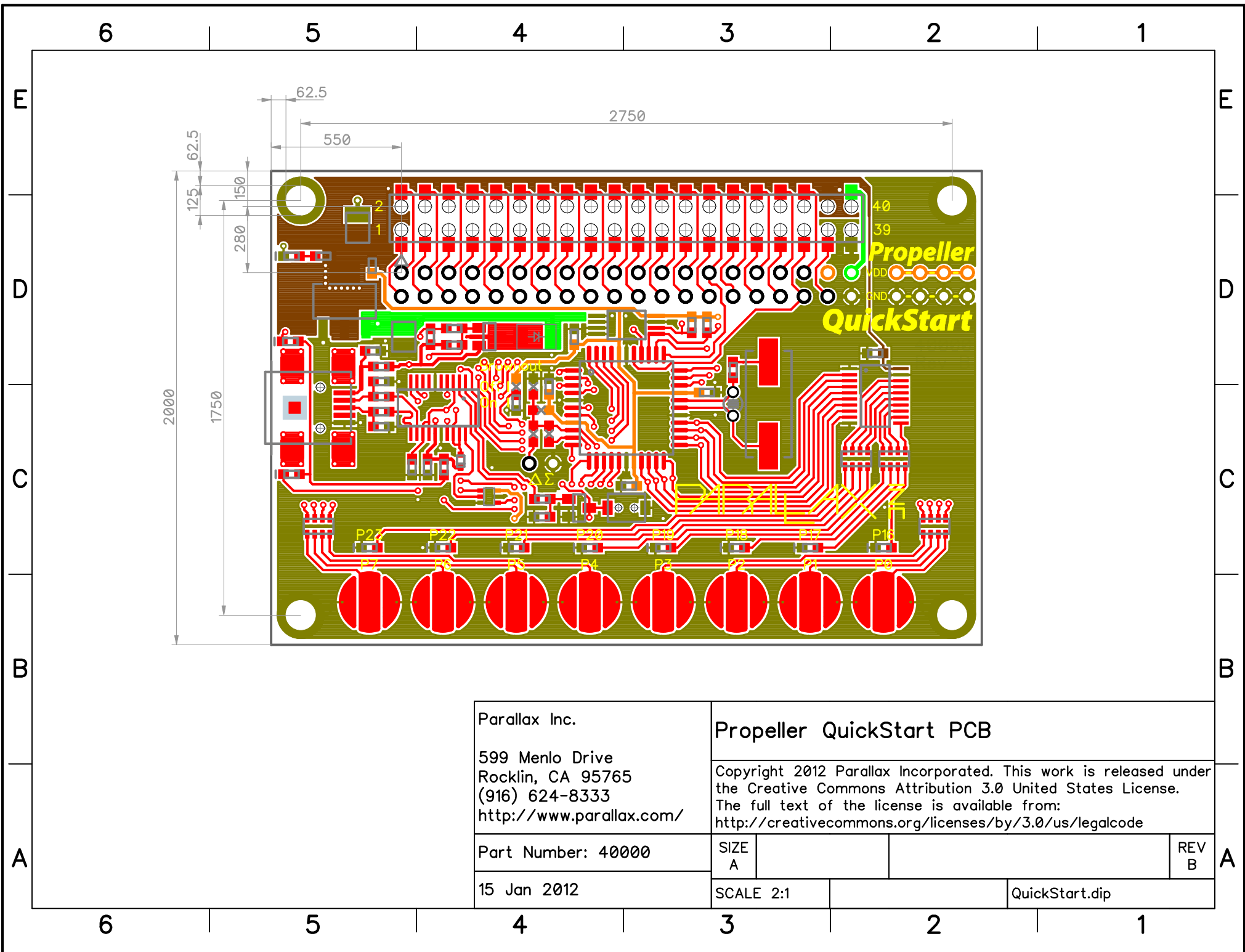
Copyright 2012 Parallax Incorporated. This work is released under the Creative Commons Attribution 3.0 United States License. The full text of the license is available from: <http://creativecommons.org/licenses/by/3.0/us/legalcode>

Part Number 40000  
 15 Jan 2013

SIZE A		REV B
		QuickStart.dch





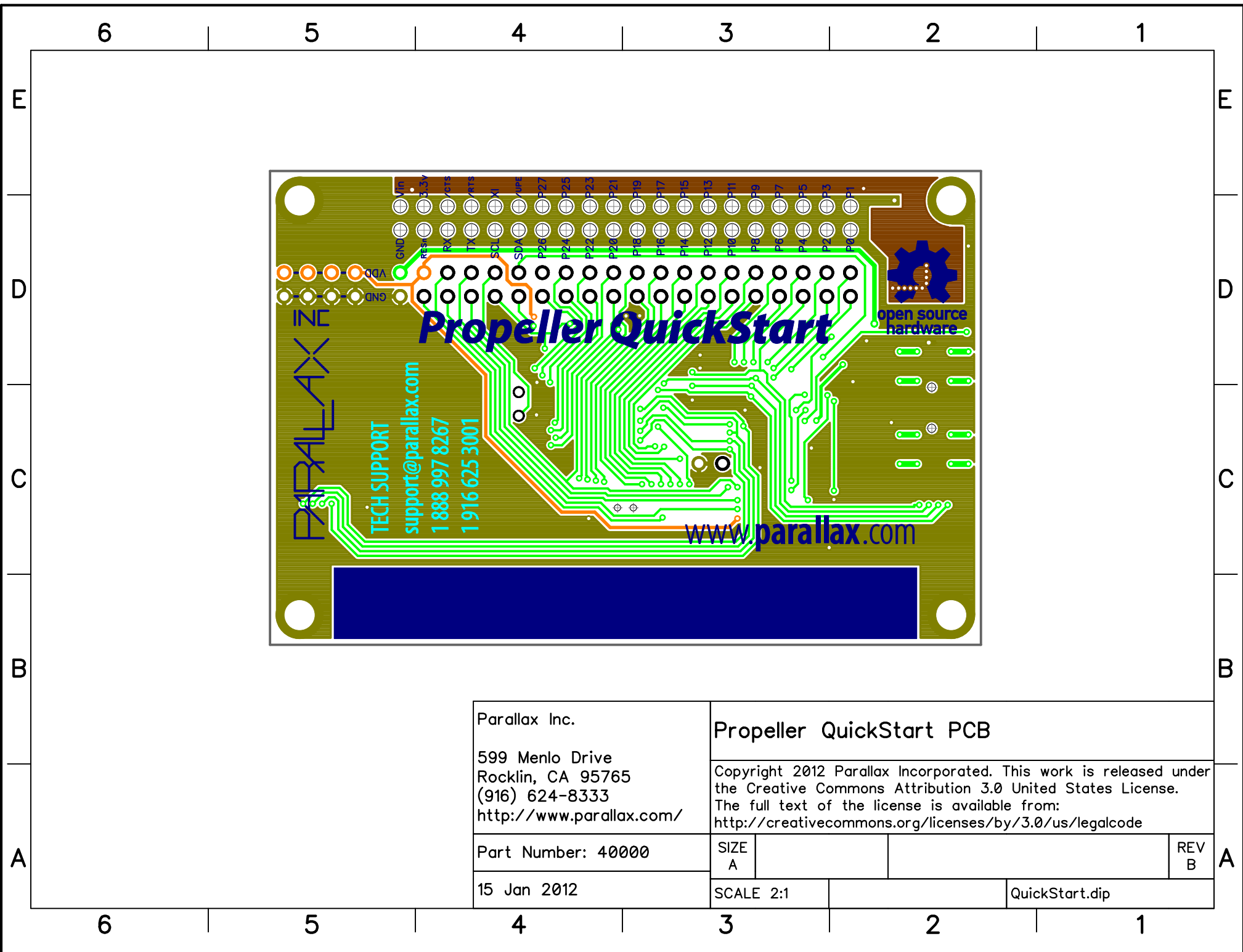


Parallax Inc.  
 599 Menlo Drive  
 Rocklin, CA 95765  
 (916) 624-8333  
<http://www.parallax.com/>

**Propeller QuickStart PCB**

Copyright 2012 Parallax Incorporated. This work is released under the Creative Commons Attribution 3.0 United States License. The full text of the license is available from: <http://creativecommons.org/licenses/by/3.0/us/legalcode>

Part Number: 40000	SIZE A		REV B
15 Jan 2012	SCALE 2:1		QuickStart.dip



Parallax Inc.  
 599 Menlo Drive  
 Rocklin, CA 95765  
 (916) 624-8333  
<http://www.parallax.com/>

Part Number: 40000

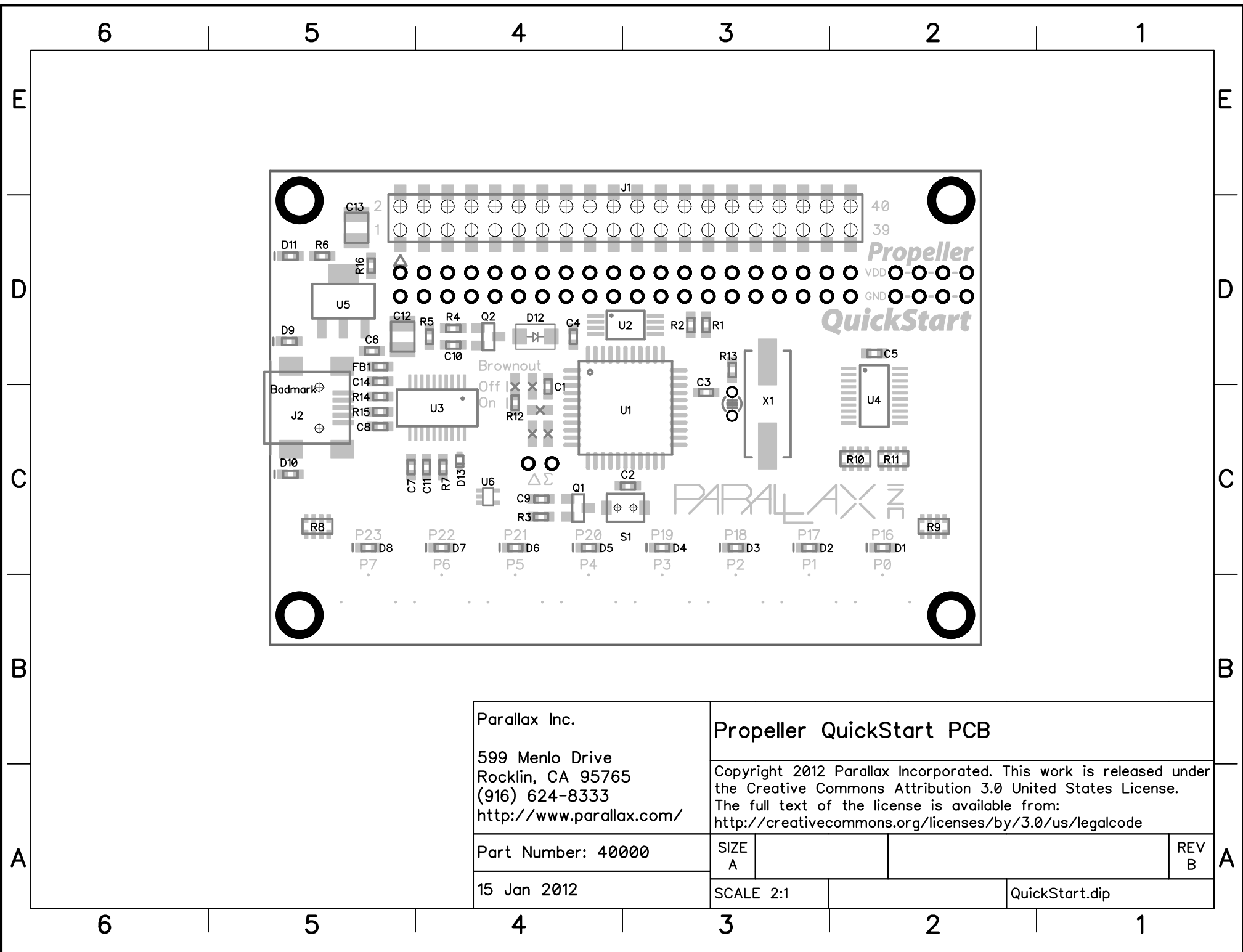
15 Jan 2012

**Propeller QuickStart PCB**

Copyright 2012 Parallax Incorporated. This work is released under the Creative Commons Attribution 3.0 United States License. The full text of the license is available from: <http://creativecommons.org/licenses/by/3.0/us/legalcode>

SIZE A		REV B
SCALE 2:1		QuickStart.dip

A



Parallax Inc.  
 599 Menlo Drive  
 Rocklin, CA 95765  
 (916) 624-8333  
<http://www.parallax.com/>

### Propeller QuickStart PCB

Copyright 2012 Parallax Incorporated. This work is released under the Creative Commons Attribution 3.0 United States License. The full text of the license is available from: <http://creativecommons.org/licenses/by/3.0/us/legalcode>

Part Number: 40000  
 15 Jan 2012

SIZE A		REV B
SCALE 2:1		QuickStart.dip

A