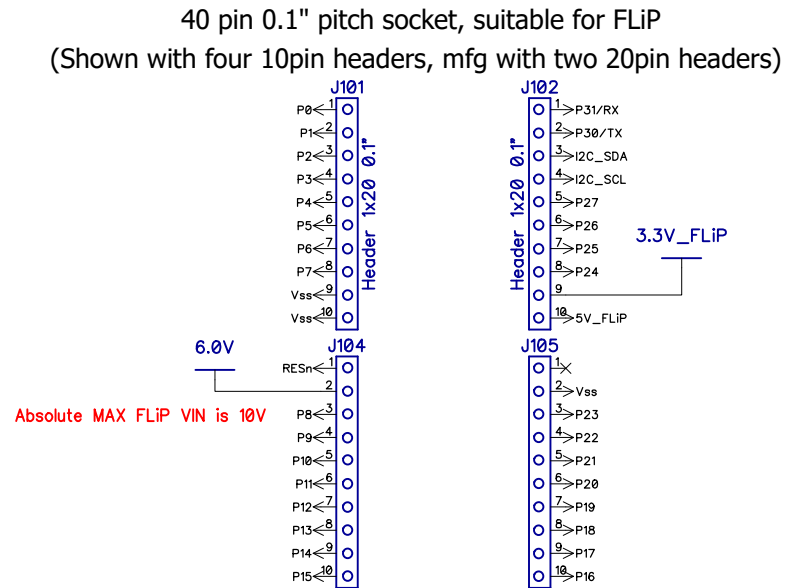
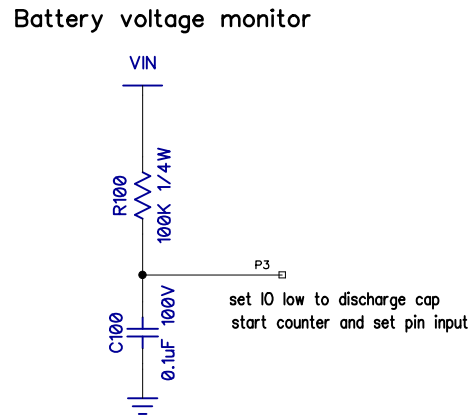
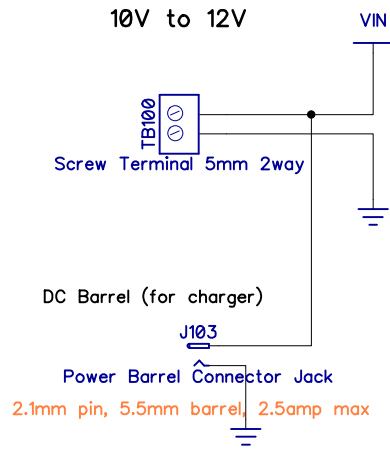
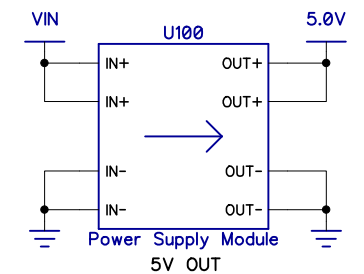


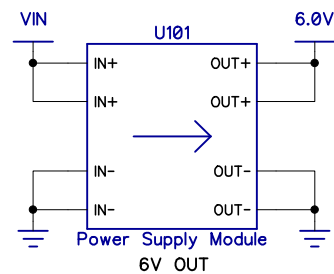
Power and FLiP Socket



Power Supply Modules - fitted with 0.1" header pins

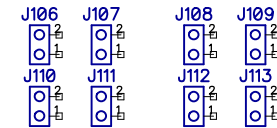


Module VIN max 28V, IOUT max 3Amp

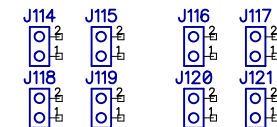


Module VIN max 28V, IOUT max 3Amp

Power Supply Module Sockets (BOM only)



Power Supply Module Pins (BOM only)



Parallax Inc.
599 Menlo Drive
Rocklin, CA 95765

(916) 624-8333
<http://www.parallax.com/>

FLiP-Pi Hat Raspberry Pi Hat

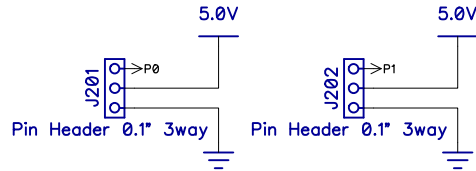
Copyright 2017 Parallax Incorporated. All Rights Reserved.
This is Open Source Hardware. This work is licensed under a Creative Commons Attribution-ShareAlike 4.0 International License. The full text of the license is available from: <http://creativecommons.org/licenses/by-sa/4.0>

Part Number: 32343
Revision: A

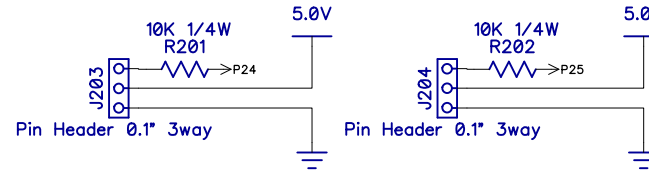
Last Update: 13 Sep 2017 (MM)

Headers

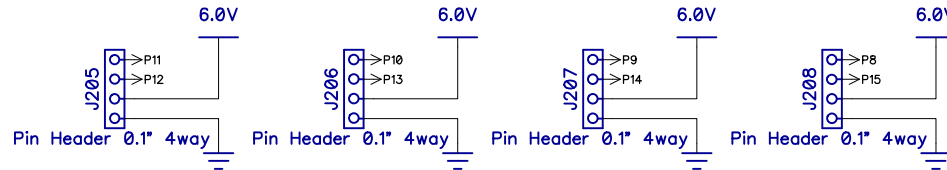
FLiP controlled IO headers at 5V



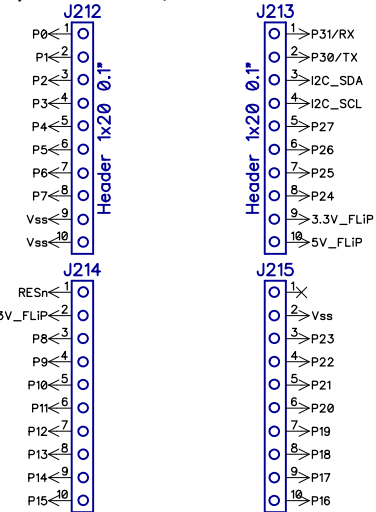
FLiP controlled IO headers at 5V, with protection resistor (recommended for LED modules)



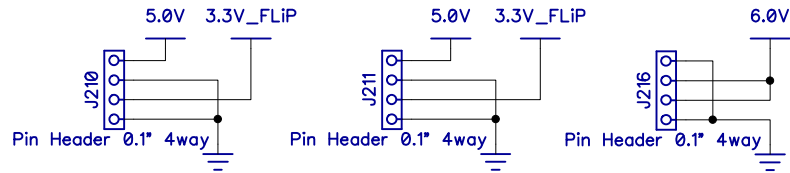
FLiP controlled servo headers at 6V



40 pin 0.1" pitch header, break out all FLiP pins

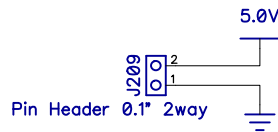


Accessory power headers



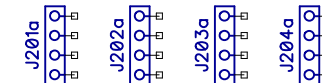
Note: Extra 3.3V out here!
rather than VIN

Raspberry Pi 5Vout power header



WARNING! Most Dangerous / Crucial Polarity!!

4 Way headers for 3-pin servo ports (BOM only)



Parallax Inc.
599 Menlo Drive
Rocklin, CA 95765

(916) 624-8333
<http://www.parallax.com/>

FLiP-Pi Hat Raspberry Pi Hat

Copyright 2017 Parallax Incorporated. All Rights Reserved.
This is Open Source Hardware. This work is licensed under a Creative Commons Attribution-ShareAlike 4.0 International License. The full text of the license is available from: <http://creativecommons.org/licenses/by-sa/4.0>

Part Number: 32343
Revision: A

Last Update: 13 Sep 2017 (MM)

BOM

RefDes	Quantity	Value	Name	Manufacturer
C100	1	0.1uF 100V	200-01040 : CAP-MONO,0.1uF,10%,100V,X7R,RA	AVX : SR201E104MAATR1
J101, J102, J212, J213	4	Header 1x20 0.1"	newPN : CON-SCKT,1X20,0.1,TH	Sullins : PPTC201LFBN-RC
J103	1	Power Barrel Connector Jack	452-00094 : Jack,Barell,2.1mm,2-pin	CUI : PJ-037A
J106, J107, J108, J109, J110, J111, J112, J113	8	Pin Socket 0.1" 2way	452-00077 : DISCON CON-SCKT,1x2,F,0.1"	Sullins : PPPC021LFBN-RC
J114, J115, J116, J117, J118, J119, J120, J121, J209	9	Pin Header 0.1" 2way	newPN : CON-HDR,1x2,0.1",Straight,TH	FCI : 68000-202HLF
J205, J206, J207, J208, J210, J211, J216, J201a, J202a, J203a, J204a	11	Pin Header 0.1" 4way	newPN : CON-HDR,1x4,0.1",Straight,TH	FCI : 68000-204HLF
R100	1	100K 1/4W	150-01040 : RES,100K,5%,1/4W,CF,TH	Yaego : CFR-25JB-52-100K
R201, R202	2	10K 1/4W	150-01030 : RES,10K,5%,1/4W,CF,TH	KOA : CF1/4CT52R103J
TB100	1	Screw Terminal 5mm 2way	452-00012 : 2 Pos Screw Terminal- LF	Phoenix Contact : 1935161
U100, U101	2	Power Supply Module	newPN : TOOGOO MP1584EN	TOOGOO : MP1584EN

Not included: Kitted parts - Standoffs/Fixings

Parallax Inc.
599 Menlo Drive
Rocklin, CA 95765

(916) 624-8333
<http://www.parallax.com/>

FLiP-Pi Hat Raspberry Pi Hat

Copyright 2017 Parallax Incorporated. All Rights Reserved.
This is Open Source Hardware. This work is licensed under a Creative Commons
Attribution-ShareAlike 4.0 International License. The full text of the license is
available from: <http://creativecommons.org/licenses/by-sa/4.0>

Part Number: 32343
Revision: A

Last Update: 13 Sep 2017 (MM)