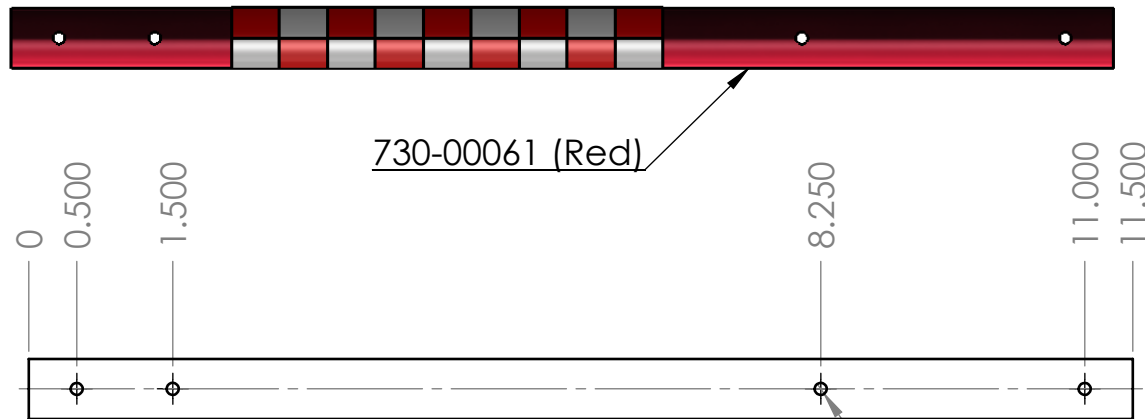


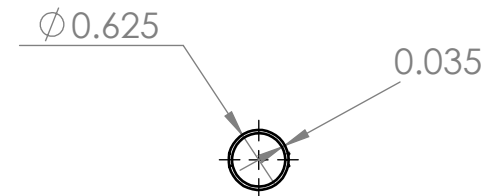
Per Quadcopter:

Qty. 2 of Motor Boom Anodized Black with black on white checkered Tape.

Qty. 2 of Motor Boom Anodized Red with Red on white checkered Tape.



4x $\varnothing 0.126$ THRU



Material: Aluminum, 6061 5/8" diameter .035 wall



PROPRIETARY AND CONFIDENTIAL
THE INFORMATION CONTAINED IN THIS DRAWING IS THE SOLE PROPERTY OF <INSERT COMPANY NAME HERE>. ANY REPRODUCTION IN PART OR AS A WHOLE WITHOUT THE WRITTEN PERMISSION OF <INSERT COMPANY NAME HERE> IS PROHIBITED.

		UNLESS OTHERWISE SPECIFIED:		NAME	DATE	TITLE: Motor Boom Arms	
		DIMENSIONS ARE IN INCHES TOLERANCES: FRACTIONAL \pm ANGULAR: MACH \pm BEND \pm TWO PLACE DECIMAL \pm THREE PLACE DECIMAL \pm		DRAWN	KO		
		INTERPRET GEOMETRIC TOLERANCING PER:		CHECKED			
		MATERIAL		ENG APPR.			
		FINISH		MFG APPR.		SIZE A	
				Q.A.			
NEXT ASSY		USED ON		COMMENTS:		DWG. NO. 730-00060 (Black) 730-00061 (Red)	
APPLICATION		DO NOT SCALE DRAWING				REV 1	
						SCALE: 1:1 WEIGHT:	
						SHEET 1 OF 1	